

Human PRPF4 Knockdown Cell Line (WB-Validated)



Catalog #: C62466

Aliases

PRPF4; Pre-mRNA Splicing Tri-SnRNP Complex Factor PRPF4; PRP4; U4/U6 Small Nuclear Ribonucleoprotein Prp4; Pre-mRNA Processing Factor 4; SNRNP60; HPRP4P; Prp4p; HPRP4; PRP4/STK/WD Splicing Factor; U4/U6 SnRNP 60 KDa Protein; WD Splicing Factor Prp4; PRP4 Homolog; PRP4 Pre-mRNA Processing Factor 4 Homolog (Yeast); PRP4 Pre-mRNA Processing Factor 4 Homolog; HPrp4; RP70

Background

Gene Name: PRPF4

NCBI Gene Entry: [9128](#)

Storage

Store at liquid nitrogen for 1 year.

Kit Components

1. Human PRPF4 Knockdown Cell Line (Wb-Validated)
2. Wild-type cell line

Parental Cell Line

Human cell line supplied by the client

Validation Methods

RT-qPCR, Western blotting (WB)

Shipping

Shipped on Dry Ice.

Instructions For Use

This knockdown cell line should be paired with wild-type cell line for use.

Note: This product is for research use only.

Validation Data

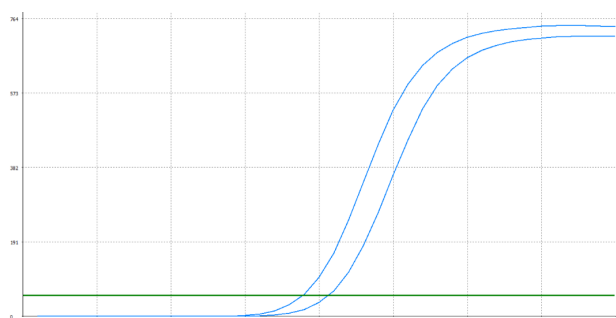
SUPPORT

SUPPORT@GENUINBIOTECH.COM
TEL: +1-540-855-7041

ORDERS

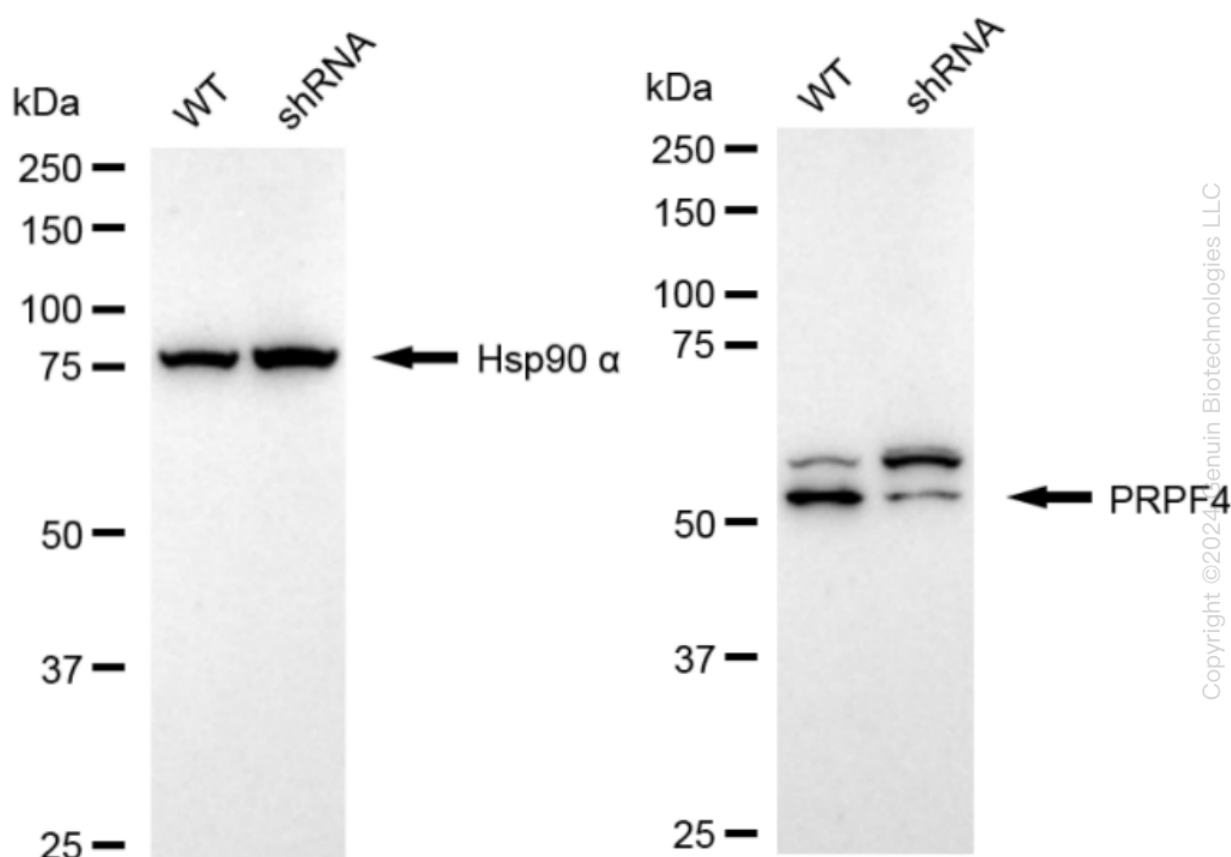
SALES@GENUINBIOTECH.COM
FAX: +1-540-855-7041

WWW.GENUINBIOTECH.COM



Genotype	Ct Value
Wild-Type	18.88
Knock-Down	20.51
$\Delta Ct (Ct_{KD} - Ct_{WT})$	1.63
% mRNA Reduction	↓ 68%

RT-qPCR analysis. HeLa cells were infected with PRPF4-specific shRNA lentiviral particles, total RNA was extracted from wild-type and knockdown cells, RT-qPCR was performed using gene-specific primers. $\Delta Ct (Ct_{KD} - Ct_{WT})$ was used to calculate mRNA reduction (%) between wild-type and knockdown cells using the following formula: $(1 - 1/2^{\Delta Ct}) \times 100\%$.



Western blotting analysis. PRPF4 protein expression in wild-type (WT) and shRNA knockdown (KD) HeLa cells was detected using Western blotting. Hsp90 α served as a loading control. The blots were incubated with primary antibodies against PRPF4 and Hsp90 α , respectively, followed by incubating with HRP-conjugated goat anti-rabbit secondary antibody. Images were developed using FeQ™ ECL Substrate Kit.