

Human PRDX5 Knockdown Cell Line (WB-Validated)



Catalog #: C62476

Aliases

Peroxiredoxin 5; AOEB166; ACR1; PLP; Peroxisomal Antioxidant Enzyme; Liver Tissue 2D-Page Spot 71B; Thioredoxin Peroxidase PMP20; Antioxidant Enzyme B166; TPx Type VI; SBB110; PMP20; PRDX6; PRXV; B166; Thioredoxin-Dependent Peroxiredoxin 5; Peroxiredoxin-5, Mitochondrial; Alu Co-Repressor 1; Peroxiredoxin V; MGC142285; MGC117264; MGC142283; Prx-V; Epididymis Secretory Protein Li 55; Thioredoxin Reductase; Alu Corepressor 1; EC 1.11.1.24; EC 1.11.1.15; HEL-S-55

Background

Gene Name: PRDX5

NCBI Gene Entry: [25824](#)

Storage

Store at liquid nitrogen for 1 year.

Kit Components

1. Human PRDX5 Knockdown Cell Line (Wb-Validated)
2. Wild-type cell line

Parental Cell Line

Human cell line supplied by the client

Validation Methods

RT-qPCR, Western blotting (WB)

Shipping

Shipped on Dry Ice.

Instructions For Use

This knockdown cell line should be paired with wild-type cell line for use.

Note: This product is for research use only.

Validation Data

SUPPORT

SUPPORT@GENUINBIOTECH.COM
TEL: +1-540-855-7041

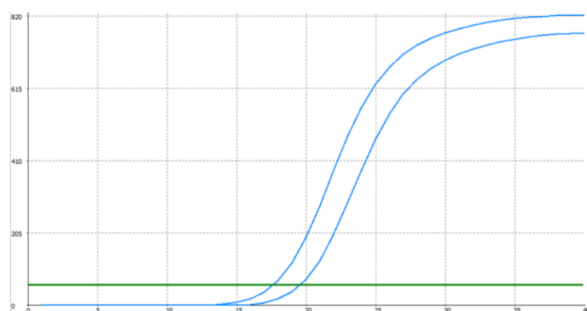
ORDERS

SALES@GENUINBIOTECH.COM
FAX: +1-540-855-7041

WWW.GENUINBIOTECH.COM

Human PRDX5 Knockdown Cell Line (WB-Validated)

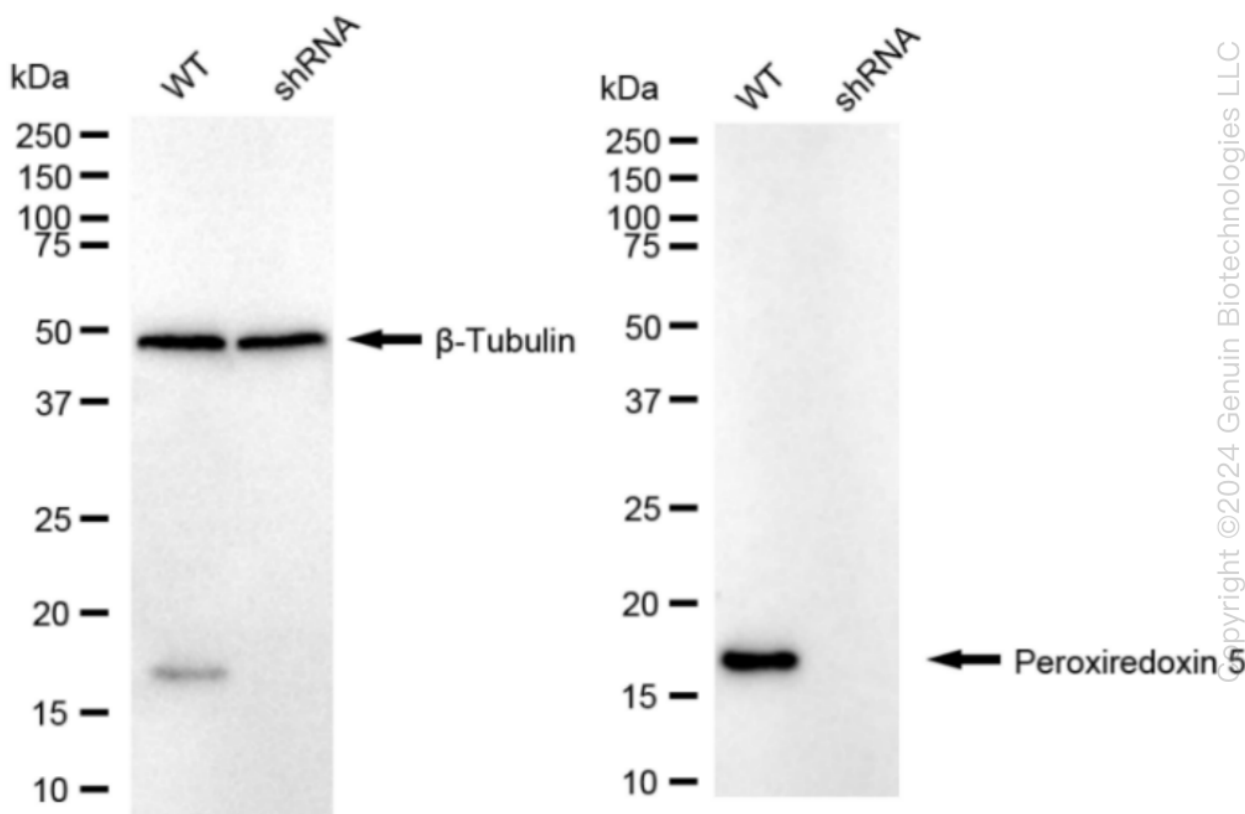
PAGE 2



Genotype	Ct Value
Wild-Type	17.67
Knock-Down	19.48
$\Delta Ct (Ct_{KD} - Ct_{WT})$	1.81
% mRNA Reduction	↓ 71%

Copyright ©2024 Genuin Biotechnologies LLC

RT-qPCR analysis. HeLa cells were infected with PRDX5-specific shRNA lentiviral particles, total RNA was extracted from wild-type and knockdown cells, RT-qPCR was performed using gene-specific primers. $\Delta Ct (Ct_{KD} - Ct_{WT})$ was used to calculate mRNA reduction (%) between wild-type and knockdown cells using the following formula: $(1 - 1/2^{\Delta Ct}) \times 100\%$.



Copyright ©2024 Genuin Biotechnologies LLC

Western blotting analysis. PRDX5 protein expression in wild-type (WT) and shRNA knockdown (KD) HeLa cells was detected using Western blotting. β -Tubulin served as a loading control. The blots were incubated with primary antibodies (Cat#62476, 1:5,000) against PRDX5 and β -Tubulin, respectively, followed by incubating with HRP-conjugated goat anti-rabbit secondary antibody (Cat#201, 1:20,000). Images were developed using FeQ™ ECL Substrate Kit (Cat#226).

SUPPORT

SUPPORT@GENUINBIOTECH.COM
TEL: +1-540-855-7041

ORDERS

SALES@GENUINBIOTECH.COM
FAX: +1-540-855-7041

WWW.GENUINBIOTECH.COM