

Human SDHC Knockdown Cell Line (WB-Validated)



Catalog #: C62487

Aliases

Succinate Dehydrogenase Complex Subunit C; CYB560; CybL; Succinate Dehydrogenase Complex, Subunit C, Integral Membrane Protein, 15kD; Succinate Dehydrogenase Cytochrome B560 Subunit, Mitochondrial; Succinate-Ubiquinone Oxidoreductase Cytochrome B Large Subunit; Succinate Dehydrogenase Cytochrome B; Large Subunit Of Cytochrome B; PGL3; SDH3; Succinate Dehydrogenase Complex, Subunit C, Integral Membrane Protein, 15kDa; Succinate Dehydrogenase Complex Subunit C Integral Membrane Protein 15kDa; Succinate Dehydrogenase 3, Integral Membrane Subunit; Succinate Dehydrogenase Cytochrome B560 Subunit; Cytochrome B Large Subunit Of Complex II; Integral Membrane Protein CII-3b; Integral Membrane Protein CII-3; PPGL3; QPs-1; QPS1; QPs1; CYBL

Background

Gene Name: SDHC
NCBI Gene Entry: [6391](#)

Storage

Store at liquid nitrogen for 1 year.

Kit Components

1. Human SDHC Knockdown Cell Line (Wb-Validated)
2. Wild-type cell line

Parental Cell Line

Human cell line supplied by the client

Validation Methods

RT-qPCR, Western blotting (WB)

Shipping

Shipped on Dry Ice.

Instructions For Use

This knockdown cell line should be paired with wild-type cell line for use.

Note: This product is for research use only.

SUPPORT

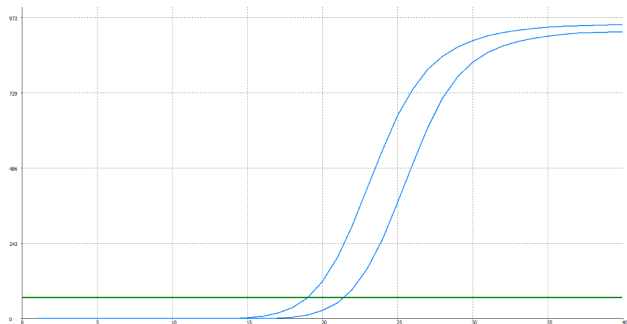
SUPPORT@GENUINBIOTECH.COM
TEL: +1-540-855-7041

ORDERS

SALES@GENUINBIOTECH.COM
FAX: +1-540-855-7041

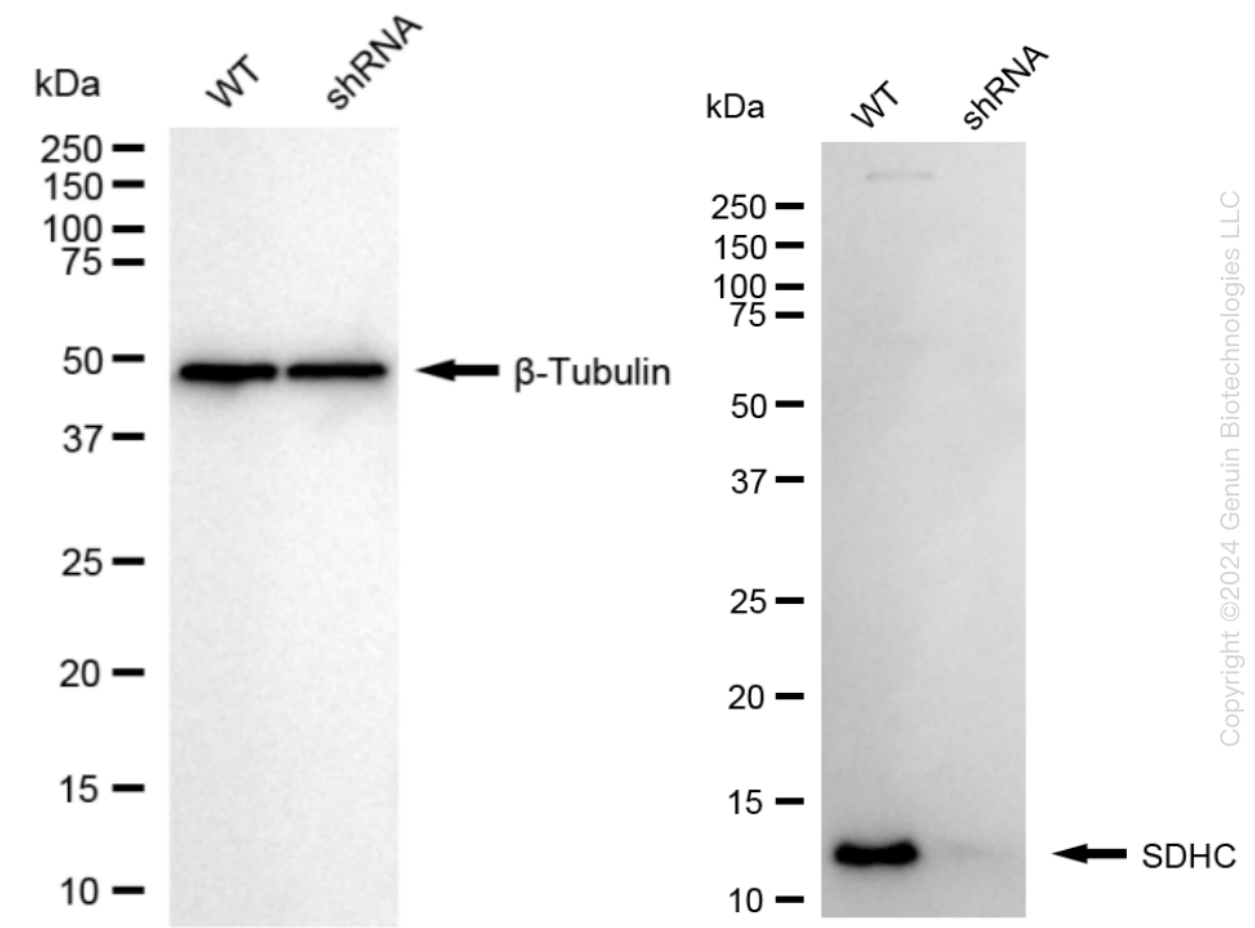
WWW.GENUINBIOTECH.COM

Validation Data



Genotype	Ct Value
Wild-Type	19.00
Knock-Down	21.32
$\Delta Ct (Ct_{KD}-Ct_{WT})$	2.32
% mRNA Reduction	↓ 80%

RT-qPCR analysis. HeLa cells were infected with SDHC-specific shRNA lentiviral particles, total RNA was extracted from wild-type and knockdown cells, RT-qPCR was performed using gene-specific primers. $\Delta Ct (Ct_{KD}-Ct_{WT})$ was used to calculate mRNA reduction (%) between wild-type and knockdown cells using the following formula: $(1-1/2^{\Delta Ct}) \times 100\%$.



Western blotting analysis. SDHC protein expression in wild-type (WT) and shRNA knockdown (KD) HeLa cells was detected using Western blotting. β -Tubulin served as a loading control. The blots were incubated with primary antibodies against SDHC and β -Tubulin, respectively, followed by incubating with HRP-conjugated goat anti-rabbit secondary antibody. Images were developed

Human SDHC Knockdown Cell Line (WB-Validated)

PAGE 3

using FeQ™ ECL Substrate Kit.

SUPPORT

SUPPORT@GENUINBIOTECH.COM
TEL: +1-540-855-7041

ORDERS

SALES@GENUINBIOTECH.COM
FAX: +1-540-855-7041

WWW.GENUINBIOTECH.COM