

# Human PTBP1 Knockdown Cell Line (WB-Validated)



**Catalog #: C62491**

## Aliases

PTBP1; Polypyrimidine Tract Binding Protein 1; Heterogeneous Nuclear Ribonucleoprotein I; HNRNP-I; HNRPI; PTB-1; PTB2; PTB3; PTB4; PPTB; PTB; Polypyrimidine Tract Binding Protein (Heterogeneous Nuclear Ribonucleoprotein I); Polypyrimidine Tract-Binding Protein 1; 57 KDa RNA-Binding Protein PPTB-1; HnRNP I; Heterogeneous Nuclear Ribonucleoprotein Polypeptide I; RNA-Binding Protein; HNRNP1; PTB-T

## Background

Gene Name: PTBP1

NCBI Gene Entry: [5725](#)

## Storage

Store at liquid nitrogen for 1 year.

## Kit Components

1. Human PTBP1 Knockdown Cell Line (Wb-Validated)
2. Wild-type cell line

## Parental Cell Line

Human cell line supplied by the client

## Validation Methods

RT-qPCR, Western blotting (WB)

## Shipping

Shipped on Dry Ice.

## Instructions For Use

This knockdown cell line should be paired with wild-type cell line for use.

**Note:** This product is for research use only.

## Validation Data

---

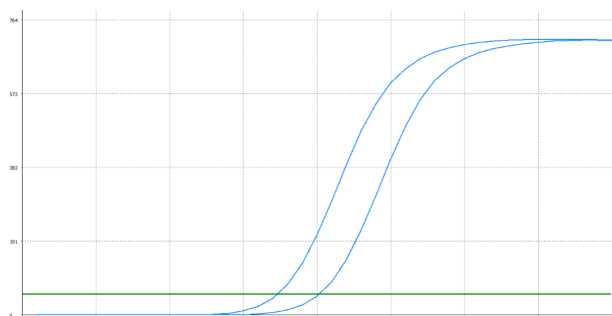
### SUPPORT

SUPPORT@GENUINBIOTECH.COM  
TEL: +1-540-855-7041

### ORDERS

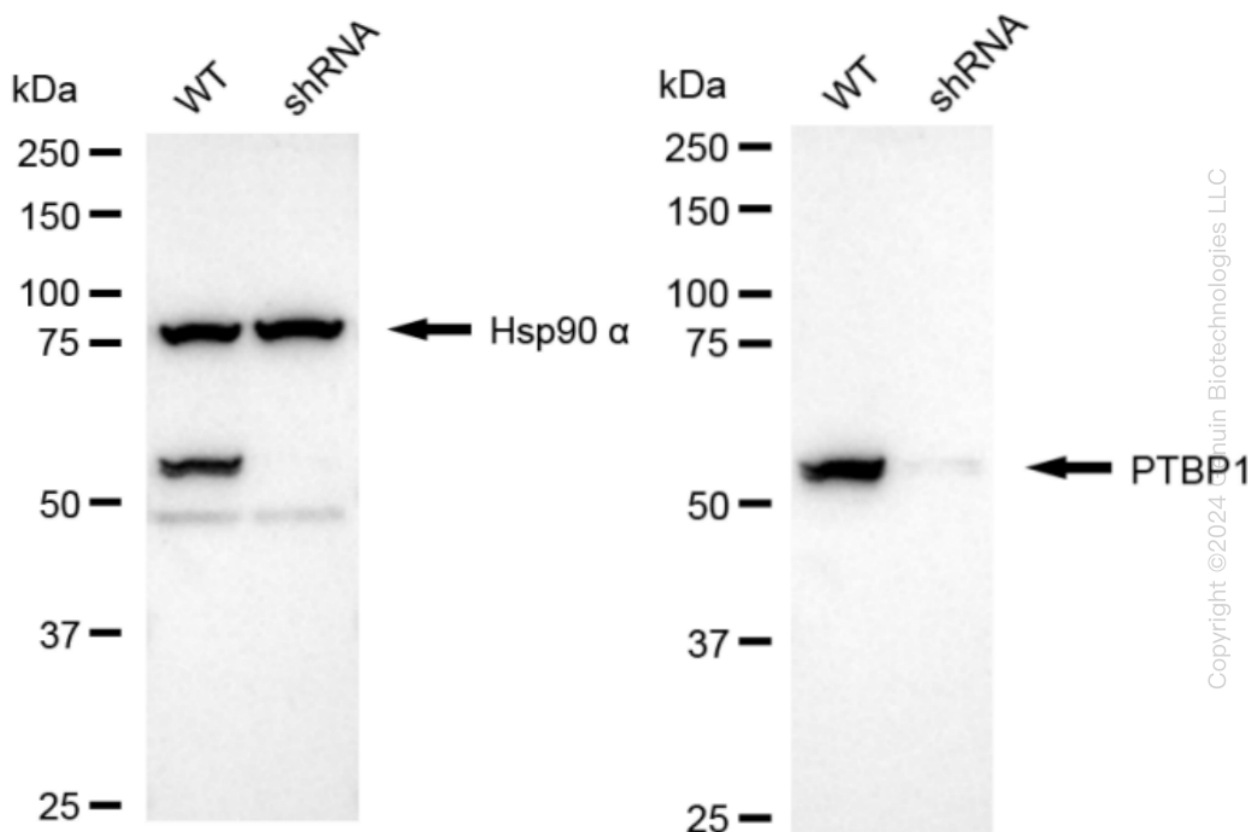
SALES@GENUINBIOTECH.COM  
FAX: +1-540-855-7041

[WWW.GENUINBIOTECH.COM](http://WWW.GENUINBIOTECH.COM)



Genotype	Ct Value
Wild-Type	17.22
Knock-Down	20.07
$\Delta Ct (Ct_{KD} - Ct_{WT})$	2.85
% mRNA Reduction	↓ 86%

RT-qPCR analysis. HeLa cells were infected with PTBP1-specific shRNA lentiviral particles, total RNA was extracted from wild-type and knockdown cells, RT-qPCR was performed using gene-specific primers.  $\Delta Ct (Ct_{KD} - Ct_{WT})$  was used to calculate mRNA reduction (%) between wild-type and knockdown cells using the following formula:  $(1 - 1/2^{\Delta Ct}) \times 100\%$ .



Western blotting analysis. PTBP1 protein expression in wild-type (WT) and shRNA knockdown (KD) HeLa cells was detected using Western blotting. Hsp90  $\alpha$  served as a loading control. The blots were incubated with primary antibodies against PTBP1 and Hsp90  $\alpha$ , respectively, followed by incubating with HRP-conjugated goat anti-rabbit secondary antibody. Images were developed using FeQ™ ECL Substrate Kit.