

Human PELP1 Knockdown Cell Line (WB-Validated)



Catalog #: C62501

Aliases

PELP1; Proline, Glutamate And Leucine Rich Protein 1; MNAR; Modulator Of Non-Genomic Activity Of Estrogen Receptor; Proline-, Glutamic Acid- And Leucine-Rich Protein 1; Transcription Factor HMX3; Proline, Glutamic Acid And Leucine Rich Protein 1; Proline And Glutamic Acid Rich Nuclear Protein; P160; HMX3

Background

Gene Name: PELP1

NCBI Gene Entry: [27043](#)

Storage

Store at liquid nitrogen for 1 year.

Kit Components

1. Human PELP1 Knockdown Cell Line (Wb-Validated)
2. Wild-type cell line

Parental Cell Line

Human cell line supplied by the client

Validation Methods

RT-qPCR, Western blotting (WB)

Shipping

Shipped on Dry Ice.

Instructions For Use

This knockdown cell line should be paired with wild-type cell line for use.

Note: This product is for research use only.

Validation Data

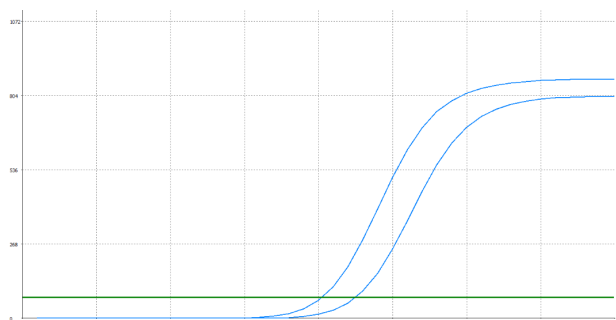
SUPPORT

SUPPORT@GENUINBIOTECH.COM
TEL: +1-540-855-7041

ORDERS

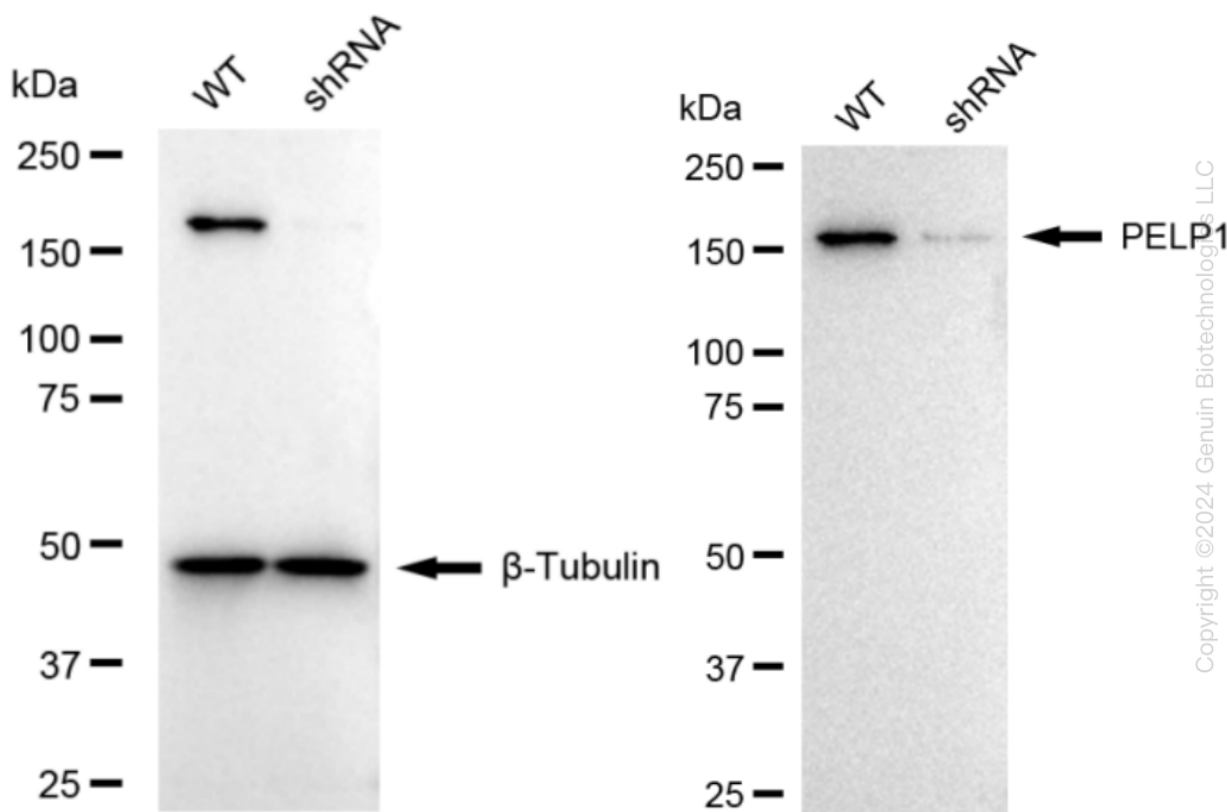
SALES@GENUINBIOTECH.COM
FAX: +1-540-855-7041

WWW.GENUINBIOTECH.COM



| Genotype | Ct Value |
|---------------------------------|----------|
| Wild-Type | 19.89 |
| Knock-Down | 22.05 |
| $\Delta Ct (Ct_{KD} - Ct_{WT})$ | 2.16 |
| % mRNA Reduction | ↓ 78% |

RT-qPCR analysis. HeLa cells were infected with PELP1-specific shRNA lentiviral particles, total RNA was extracted from wild-type and knockdown cells, RT-qPCR was performed using gene-specific primers. $\Delta Ct (Ct_{KD} - Ct_{WT})$ was used to calculate mRNA reduction (%) between wild-type and knockdown cells using the following formula: $(1 - 1/2^{\Delta Ct}) \times 100\%$.



Western blotting analysis. PELP1 protein expression in wild-type (WT) and shRNA knockdown (KD) HeLa cells was detected using Western blotting. β -Tubulin served as a loading control. The blots were incubated with primary antibodies against PELP1 and β -Tubulin, respectively, followed by incubating with HRP-conjugated goat anti-rabbit secondary antibody. Images were developed using FeQ™ ECL Substrate Kit.