

Human RARA Knockdown Cell Line (WB-Validated)



Catalog #: C62504

Aliases

RARA; Retinoic Acid Receptor Alpha; RAR-Alpha; NR1B1; RARalpha; RAR; Nuclear Receptor Subfamily 1 Group B Member 1; Nucleophosmin-Retinoic Acid Receptor Alpha Fusion Protein NPM-RAR Long Form; Retinoic Acid Receptor, Alpha Polypeptide; Retinoic Acid Receptor, Alpha; PML-DDX5-RARA Fusion Protein; PML-DDX5-RARA Fusion

Background

Gene Name: RARA

NCBI Gene Entry: [5914](#)

Storage

Store at liquid nitrogen for 1 year.

Kit Components

1. Human RARA Knockdown Cell Line (Wb-Validated)
2. Wild-type cell line

Parental Cell Line

Human cell line supplied by the client

Validation Methods

RT-qPCR, Western blotting (WB)

Shipping

Shipped on Dry Ice.

Instructions For Use

This knockdown cell line should be paired with wild-type cell line for use.

Note: This product is for research use only.

Validation Data

SUPPORT

SUPPORT@GENUINBIOTECH.COM
TEL: +1-540-855-7041

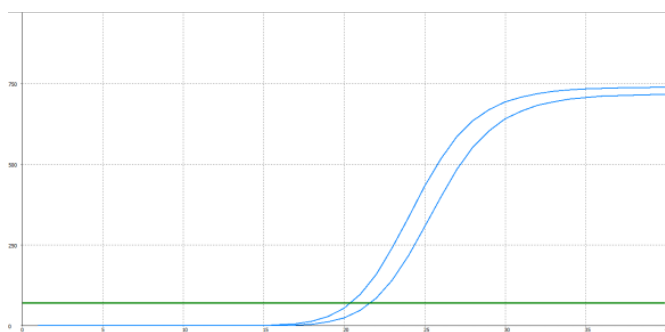
ORDERS

SALES@GENUINBIOTECH.COM
FAX: +1-540-855-7041

WWW.GENUINBIOTECH.COM

Human RARA Knockdown Cell Line (WB-Validated)

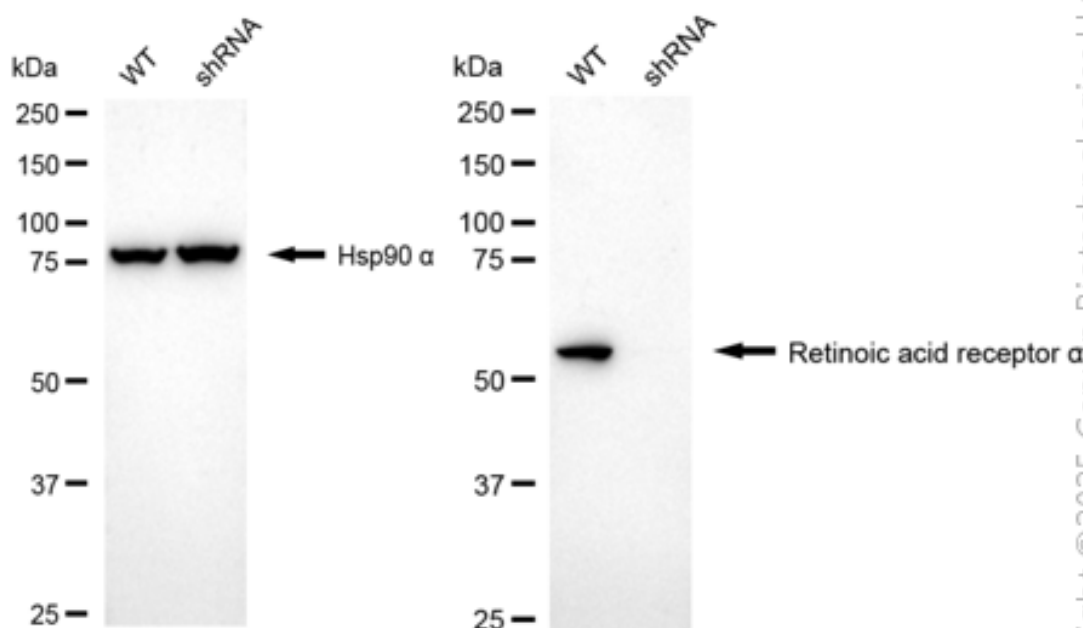
PAGE 2



Genotype	Ct Value
Wild-Type	16.71
Knock-Down	19.08
Δ Ct (CtKD-CtWT)	2.37
% mRNA Reduction	81%

Copyright © 2025 Genuin Biotechnologies LLC

RT-qPCR analysis. HeLa cells were infected with RARA-specific shRNA lentiviral particles, total RNA was extracted from wild-type and knockdown cells, RT-qPCR was performed using gene-specific primers. Δ Ct (CtKD-CtWT) was used to calculate mRNA reduction (%) between wild-type and knockdown cells using the following formula: $(1 - 1/2^{\Delta\text{Ct}}) \times 100\%$.



Copyright © 2025 Genuin Biotechnologies LLC

Western blotting analysis. RARA protein expression in wild-type (WT) and shRNA knockdown (KD) HeLa cells was detected using Western blotting. Hsp90 α served as a loading control. The blots were incubated with primary antibodies against RARA and Hsp90 α , respectively, followed by incubating with HRP-conjugated goat anti-rabbit secondary antibody. Images were developed using FeQ™ ECL Substrate Kit.

SUPPORT

SUPPORT@GENUINBIOTECH.COM
TEL: +1-540-855-7041

ORDERS

SALES@GENUINBIOTECH.COM
FAX: +1-540-855-7041

WWW.GENUINBIOTECH.COM