

# Human NHERF1 Knockdown Cell Line (WB-Validated)



**Catalog #: C62529**

## Aliases

NHERF1; NHERF Family PDZ Scaffold Protein 1; NHERF-1; NHERF; EBP50; SLC9A3R1; NHE-RF; Solute Carrier Family 9, Subfamily A (NHE3, Cation Proton Antiporter 3), Member 3 Regulator 1; Na(+)/H(+) Exchange Regulatory Cofactor NHE-RF1; Ezrin-Radixin-Moesin-Binding Phosphoprotein 50; Regulatory Cofactor Of Na(+)/H(+) Exchanger; Na(+)/H(+) Exchange Regulatory Cofactor 1; SLC9A3 Regulator 1; Solute Carrier Family 9 (Sodium/Hydrogen Exchanger), Isoform 3 Regulatory Factor 1; Solute Carrier Family 9 (Sodium/Hydrogen Exchanger), Isoform 3 Regulator 1; Solute Carrier Family 9 (Sodium/Hydrogen Exchanger), Member 3 Regulator 1; Solute Carrier Family 9 Isoform A3 Regulatory Factor 1; Ezrin-Radixin-Moesin Binding Phosphoprotein-50; Sodium-Hydrogen Exchanger Regulatory Factor 1; Na<sup>+</sup>/H<sup>+</sup> Exchange Regulatory Co-Factor; NPHLOP2

## Background

Gene Name: NHERF1

NCBI Gene Entry: [9368](#)

## Storage

Store at liquid nitrogen for 1 year.

## Kit Components

1. Human NHERF1 Knockdown Cell Line (Wb-Validated)
2. Wild-type cell line

## Parental Cell Line

Human cell line supplied by the client

## Validation Methods

RT-qPCR, Western blotting (WB)

## Shipping

Shipped on Dry Ice.

## Instructions For Use

This knockdown cell line should be paired with wild-type cell line for use.

---

### SUPPORT

SUPPORT@GENUINBIOTECH.COM  
TEL: +1-540-855-7041

### ORDERS

SALES@GENUINBIOTECH.COM  
FAX: +1-540-855-7041

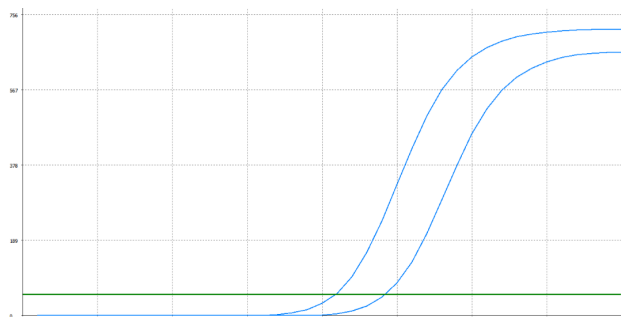
[WWW.GENUINBIOTECH.COM](http://WWW.GENUINBIOTECH.COM)

# Human NHERF1 Knockdown Cell Line (WB-Validated)

PAGE 2

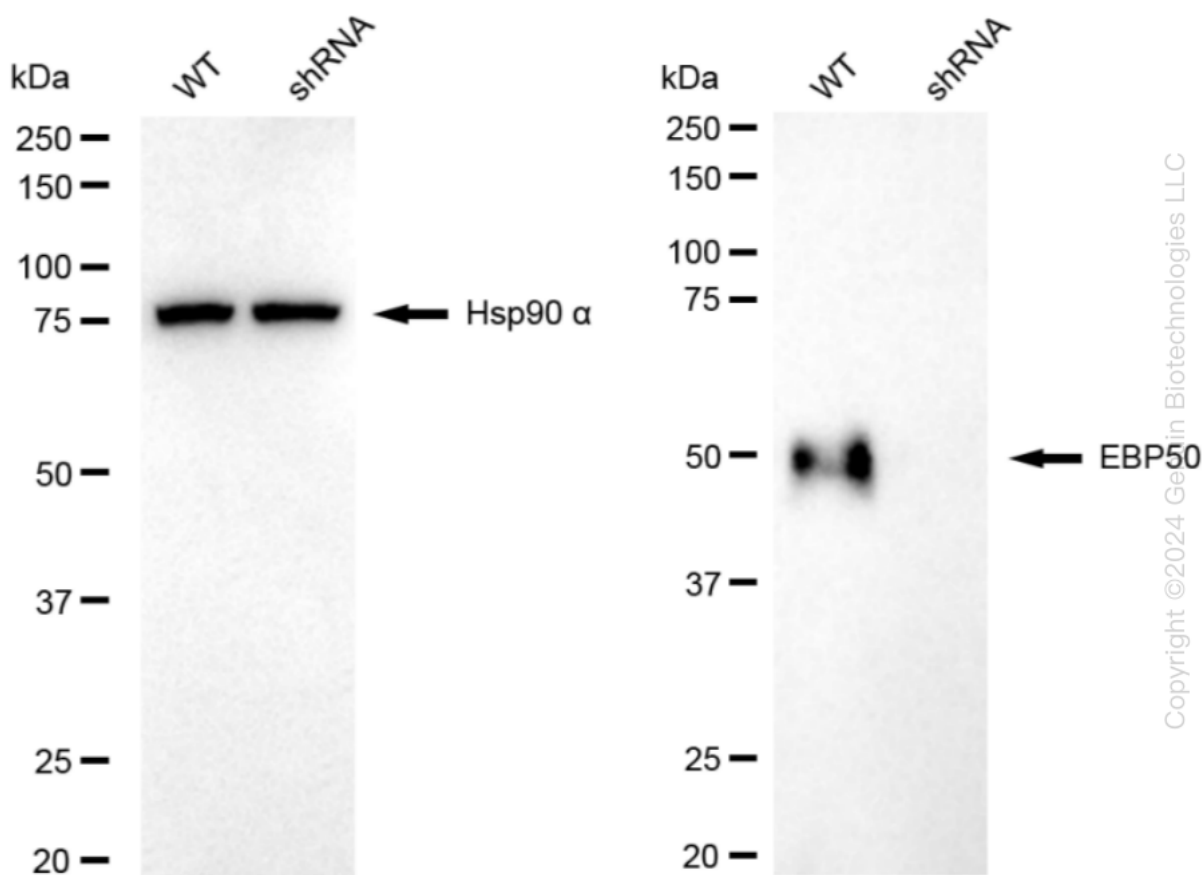
**Note:** This product is for research use only.

## Validation Data



Genotype	Ct Value
Wild-Type	20.80
Knock-Down	24.02
$\Delta Ct$ ( $Ct_{KD} - Ct_{WT}$ )	3.22
% mRNA Reduction	↓ 89%

RT-qPCR analysis. HeLa cells were infected with NHERF1-specific shRNA lentiviral particles, total RNA was extracted from wild-type and knockdown cells, RT-qPCR was performed using gene-specific primers.  $\Delta Ct$  ( $Ct_{KD} - Ct_{WT}$ ) was used to calculate mRNA reduction (%) between wild-type and knockdown cells using the following formula:  $(1 - 1/2^{\Delta Ct}) \times 100\%$ .



Western blotting analysis. NHERF1 protein expression in wild-type (WT) and shRNA knockdown (KD) HeLa cells was detected using Western blotting. Hsp90  $\alpha$  served as a loading control. The blots were incubated with primary antibodies against NHERF1 and Hsp90  $\alpha$ , respectively,

### SUPPORT

SUPPORT@GENUINBIOTECH.COM  
TEL: +1-540-855-7041

### ORDERS

SALES@GENUINBIOTECH.COM  
FAX: +1-540-855-7041

[WWW.GENUINBIOTECH.COM](http://WWW.GENUINBIOTECH.COM)

## **Human NHERF1 Knockdown Cell Line (WB-Validated)**

PAGE 3

followed by incubating with HRP-conjugated goat anti-rabbit secondary antibody. Images were developed using FeQ™ ECL Substrate Kit.

---

### **SUPPORT**

SUPPORT@GENUINBIOTECH.COM  
TEL: +1-540-855-7041

### **ORDERS**

SALES@GENUINBIOTECH.COM  
FAX: +1-540-855-7041

**WWW.GENUINBIOTECH.COM**