

# Human MDH1 Knockdown Cell Line (WB-Validated)



**Catalog #: C62535**

## Aliases

MDH1; Malate Dehydrogenase 1; Malate Dehydrogenase 1, NAD (Soluble); Aromatic Alpha-Keto Acid Reductase; Malate Dehydrogenase, Cytoplasmic; Cytosolic Malate Dehydrogenase; EC 1.1.1.37; MDHA; KAR; Epididymis Secretory Protein Li 32; Malate Dehydrogenase, Peroxisomal; Diiodophenylpyruvate Reductase; Soluble Malate Dehydrogenase; EC 1.1.1.96; HEL-S-32; MGC:1375; EIEE88; DEE88; MDH-S; MOR2

## Background

Gene Name: MDH1

NCBI Gene Entry: [4190](#)

## Storage

Store at liquid nitrogen for 1 year.

## Kit Components

1. Human MDH1 Knockdown Cell Line (Wb-Validated)
2. Wild-type cell line

## Parental Cell Line

Human cell line supplied by the client

## Validation Methods

RT-qPCR, Western blotting (WB)

## Shipping

Shipped on Dry Ice.

## Instructions For Use

This knockdown cell line should be paired with wild-type cell line for use.

**Note:** This product is for research use only.

## Validation Data

---

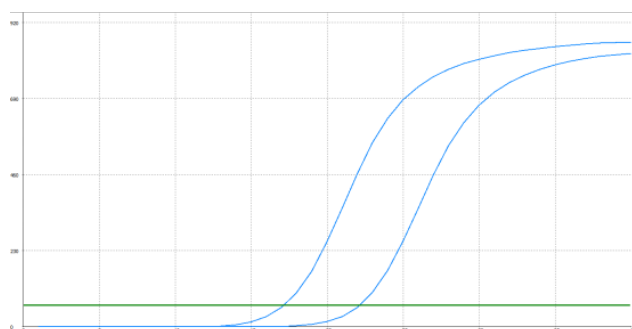
### SUPPORT

SUPPORT@GENUINBIOTECH.COM  
TEL: +1-540-855-7041

### ORDERS

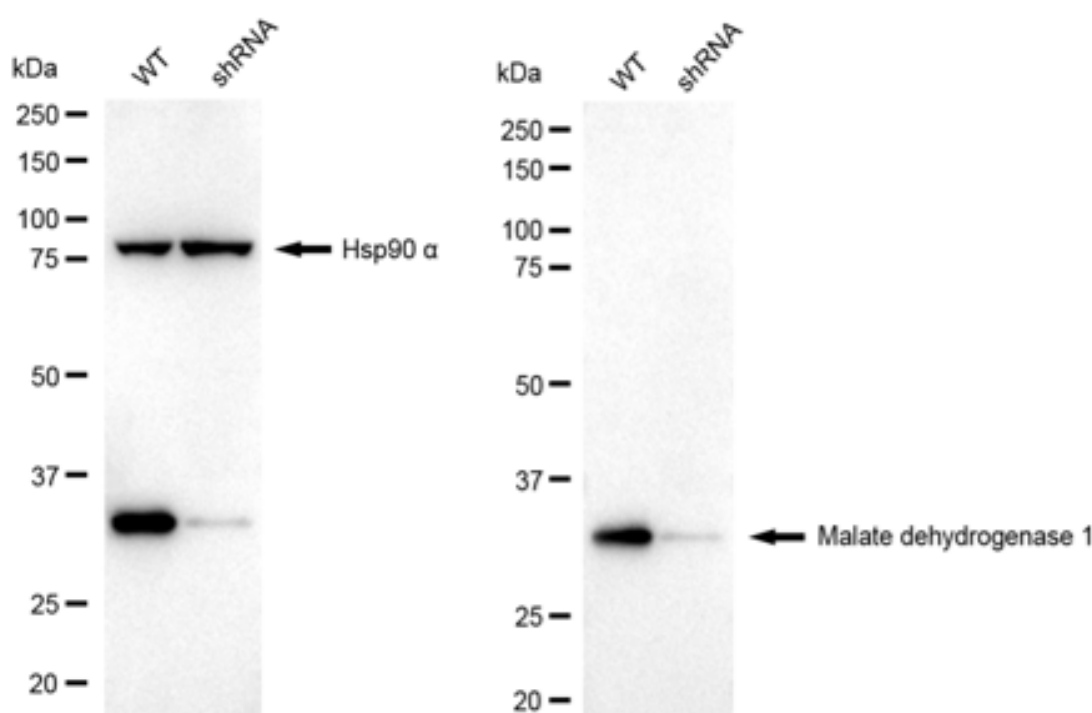
SALES@GENUINBIOTECH.COM  
FAX: +1-540-855-7041

[WWW.GENUINBIOTECH.COM](http://WWW.GENUINBIOTECH.COM)



Genotype	Ct Value
Wild-Type	17.08
Knock-Down	22.00
$\Delta Ct$ (CtKD-CtWT)	4.92
% mRNA Reduction	97%

RT-qPCR analysis. HeLa cells were infected with MDH1-specific shRNA lentiviral particles, total RNA was extracted from wild-type and knockdown cells, RT-qPCR was performed using gene-specific primers.  $\Delta Ct$  (CtKD-CtWT) was used to calculate mRNA reduction (%) between wild-type and knockdown cells using the following formula:  $(1 - 1/2^{\Delta Ct}) \times 100\%$ .



Western blotting analysis. MDH1 protein expression in wild-type (WT) and shRNA knockdown (KD) HeLa cells was detected using Western blotting. Hsp90  $\alpha$  served as a loading control. The blots were incubated with primary antibodies against MDH1 and Hsp90  $\alpha$ , respectively, followed by incubating with HRP-conjugated goat anti-rabbit secondary antibody. Images were developed using FeQ™ ECL Substrate Kit.