

Human PDLIM1 Knockdown Cell Line (WB-Validated)



Catalog #: C62538

Aliases

PDLIM1; PDZ And LIM Domain 1; CLP36; CLP-36; HCLIM1; Elfin; CLIM1; Carboxyl Terminal LIM Domain Protein 1; PDZ And LIM Domain Protein 1; LIM Domain Protein CLP-36; Epididymis Secretory Protein Li 112; C-Terminal LIM Domain Protein 1; PDZ And LIM Domain 1 (Elfin); HEL-S-112

Background

Gene Name: PDLIM1
NCBI Gene Entry: [9124](#)

Storage

Store at liquid nitrogen for 1 year.

Kit Components

1. Human PDLIM1 Knockdown Cell Line (Wb-Validated)
2. Wild-type cell line

Parental Cell Line

Human cell line supplied by the client

Validation Methods

RT-qPCR, Western blotting (WB)

Shipping

Shipped on Dry Ice.

Instructions For Use

This knockdown cell line should be paired with wild-type cell line for use.

Note: This product is for research use only.

Validation Data

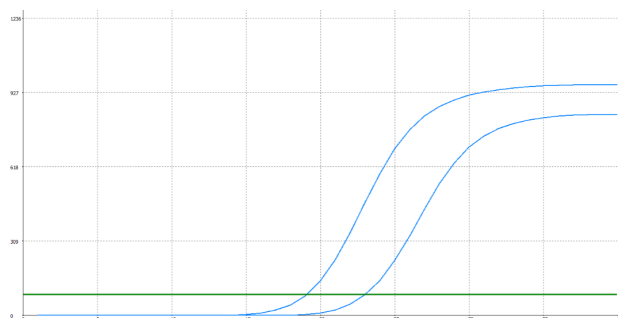
SUPPORT

SUPPORT@GENUINBIOTECH.COM
TEL: +1-540-855-7041

ORDERS

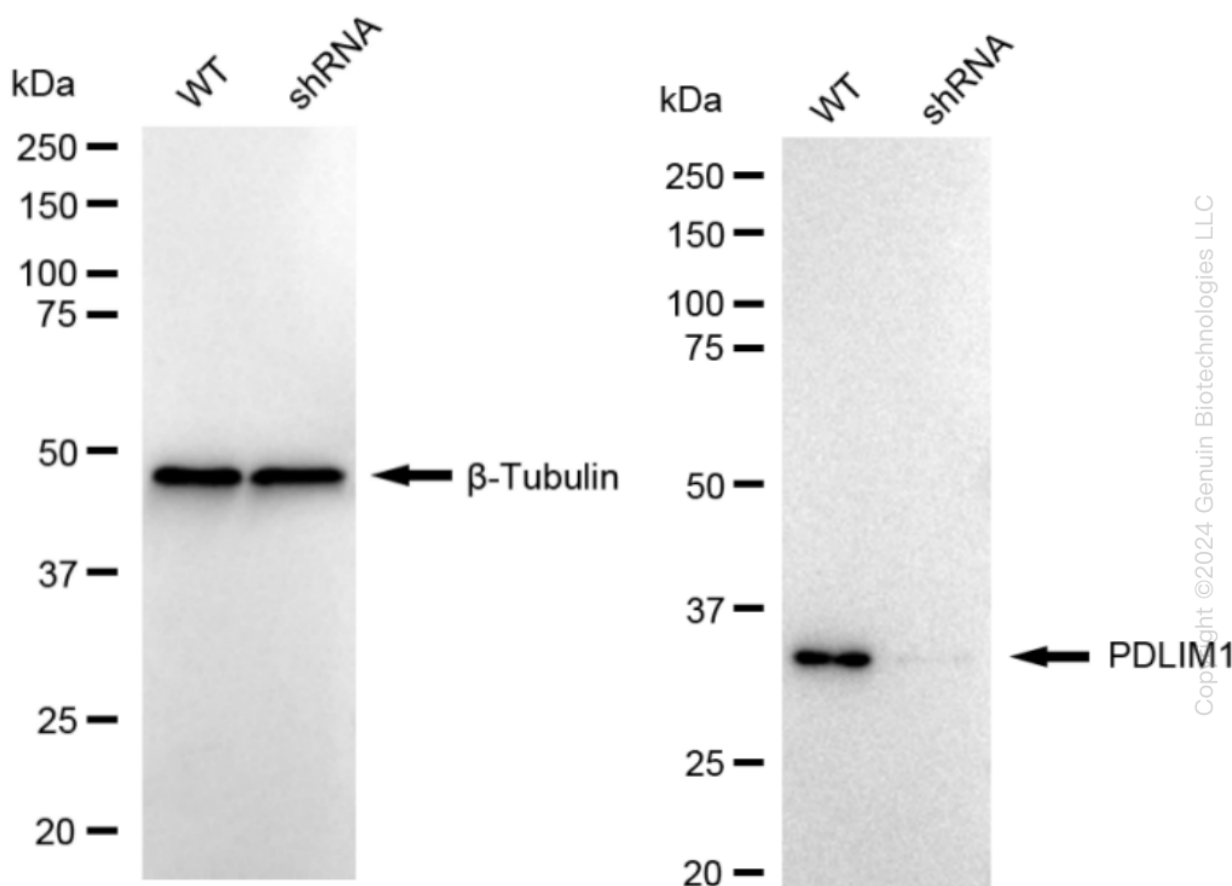
SALES@GENUINBIOTECH.COM
FAX: +1-540-855-7041

WWW.GENUINBIOTECH.COM



Genotype	Ct Value
Wild-Type	18.63
Knock-Down	22.34
$\Delta Ct (Ct_{KD}-Ct_{WT})$	3.71
% mRNA Reduction	↓ 92%

RT-qPCR analysis. HeLa cells were infected with PDLIM1-specific shRNA lentiviral particles, total RNA was extracted from wild-type and knockdown cells, RT-qPCR was performed using gene-specific primers. $\Delta Ct (Ct_{KD}-Ct_{WT})$ was used to calculate mRNA reduction (%) between wild-type and knockdown cells using the following formula: $(1-1/2^{\Delta Ct}) \times 100\%$.



Western blotting analysis. PDLIM1 protein expression in wild-type (WT) and shRNA knockdown (KD) HeLa cells was detected using Western blotting. β -Tubulin served as a loading control. The blots were incubated with primary antibodies against PDLIM1 and β -Tubulin, respectively, followed by incubating with HRP-conjugated goat anti-rabbit secondary antibody. Images were developed using FeQ™ ECL Substrate Kit.