

# Human PRKCSH Knockdown Cell Line (WB-Validated)



**Catalog #: C62541**

## Aliases

PRKCSH; Protein Kinase C Substrate 80K-H; Glucosidase 2 Subunit Beta; VASAP-60; PKCSH; G19P1; GIIB; Protein Kinase C Substrate 60.1 KDa Protein Heavy Chain; Advanced Glycation End-Product Receptor 2; Glucosidase II Subunit Beta; Hepatocystin; GluIIbeta; GIIBeta; AGE-R2; 80K-H; PCLD; PLD1; Protein Kinase C Substrate, 80 Kda Protein; Glucosidase II Beta Subunit; Polycystic Liver Disease; AGE-Binding Receptor 2; 80K-H Protein; PCLD1

## Background

Gene Name: PRKCSH  
NCBI Gene Entry: [5589](#)

## Storage

Store at liquid nitrogen for 1 year.

## Kit Components

1. Human PRKCSH Knockdown Cell Line (Wb-Validated)
2. Wild-type cell line

## Parental Cell Line

Human cell line supplied by the client

## Validation Methods

RT-qPCR, Western blotting (WB)

## Shipping

Shipped on Dry Ice.

## Instructions For Use

This knockdown cell line should be paired with wild-type cell line for use.

**Note:** This product is for research use only.

## Validation Data

---

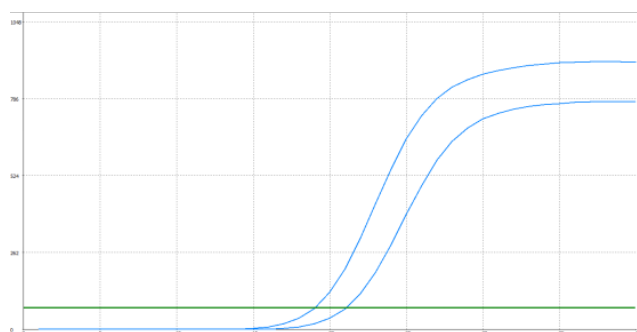
### SUPPORT

SUPPORT@GENUINBIOTECH.COM  
TEL: +1-540-855-7041

### ORDERS

SALES@GENUINBIOTECH.COM  
FAX: +1-540-855-7041

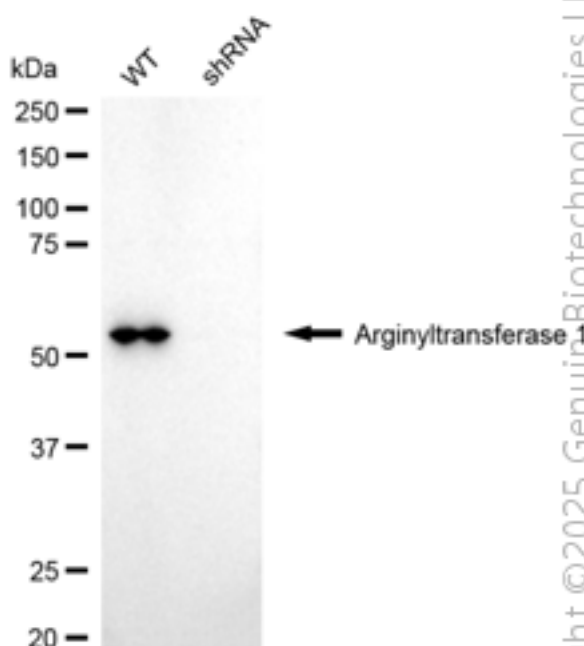
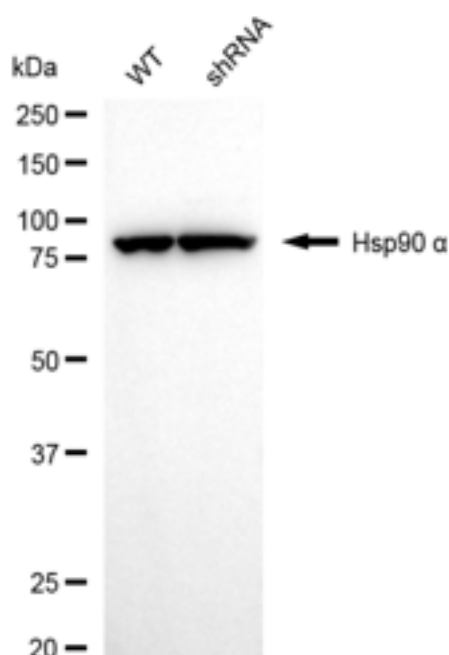
[WWW.GENUINBIOTECH.COM](http://WWW.GENUINBIOTECH.COM)



Genotype	Ct Value
Wild-Type	18.81
Knock-Down	20.55
$\Delta$ Ct (CtKD-CtWT)	1.74
% mRNA Reduction	70%

Copyright ©2025 Genuin Biotechnologies LLC

RT-qPCR analysis. HeLa cells were infected with PRKCSH-specific shRNA lentiviral particles, total RNA was extracted from wild-type and knockdown cells, RT-qPCR was performed using gene-specific primers.  $\Delta$ Ct (CtKD-CtWT) was used to calculate mRNA reduction (%) between wild-type and knockdown cells using the following formula:  $(1 - 1/2^{\Delta\text{Ct}}) \times 100\%$ .



Copyright ©2025 Genuin Biotechnologies LLC

Western blotting analysis. PRKCSH protein expression in wild-type (WT) and shRNA knockdown (KD) HeLa cells was detected using Western blotting.  $\beta$ -Tubulin served as a loading control. The blots were incubated with primary antibodies against PRKCSH and  $\beta$ -Tubulin, respectively, followed by incubating with HRP-conjugated goat anti-rabbit secondary antibody. Images were

## **Human PRKCSH Knockdown Cell Line (WB-Validated)**

PAGE 3

developed using FeQ™ ECL Substrate Kit.

---

### **SUPPORT**

SUPPORT@GENUINBIOTECH.COM  
TEL: +1-540-855-7041

### **ORDERS**

SALES@GENUINBIOTECH.COM  
FAX:+1-540-855-7041

**WWW.GENUINBIOTECH.COM**