

Human PEF1 Knockdown Cell Line (WB-Validated)



Catalog #: C62544

Aliases

PEF1; Penta-EF-Hand Domain Containing 1; Peflin; PEF1A; PEF Protein With A Long N-Terminal Hydrophobic Domain; ABP32; Epididymis Secretory Sperm Binding Protein; Penta-EF Hand Domain-Containing Protein 1

Background

Gene Name: PEF1

NCBI Gene Entry: [553115](#)

Storage

Store at liquid nitrogen for 1 year.

Kit Components

1. Human PEF1 Knockdown Cell Line (Wb-Validated)
2. Wild-type cell line

Parental Cell Line

Human cell line supplied by the client

Validation Methods

RT-qPCR, Western blotting (WB)

Shipping

Shipped on Dry Ice.

Instructions For Use

This knockdown cell line should be paired with wild-type cell line for use.

Note: This product is for research use only.

Validation Data

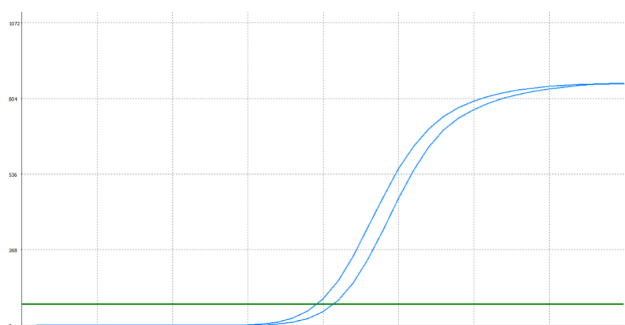
SUPPORT

SUPPORT@GENUINBIOTECH.COM
TEL: +1-540-855-7041

ORDERS

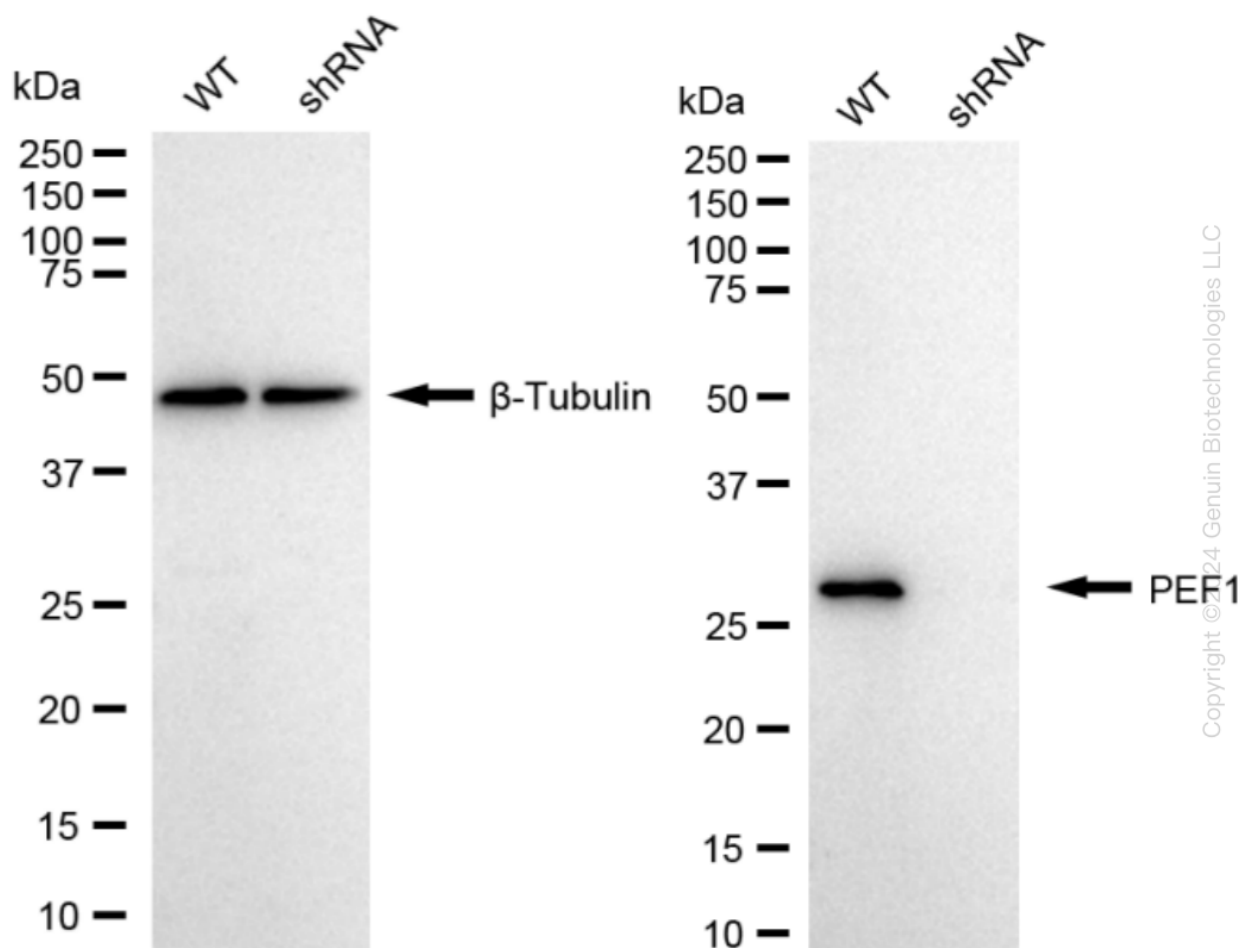
SALES@GENUINBIOTECH.COM
FAX: +1-540-855-7041

WWW.GENUINBIOTECH.COM



Genotype	Ct Value
Wild-Type	19.23
Knock-Down	20.32
ΔCt ($Ct_{KD} - Ct_{WT}$)	1.09
% mRNA Reduction	↓ 53%

RT-qPCR analysis. HeLa cells were infected with PEF1-specific shRNA lentiviral particles, total RNA was extracted from wild-type and knockdown cells, RT-qPCR was performed using gene-specific primers. ΔCt ($Ct_{KD} - Ct_{WT}$) was used to calculate mRNA reduction (%) between wild-type and knockdown cells using the following formula: $(1 - 1/2^{\Delta Ct}) \times 100\%$.



Western blotting analysis. PEF1 protein expression in wild-type (WT) and shRNA knockdown (KD) HeLa cells was detected using Western blotting. β -Tubulin served as a loading control. The blots were incubated with primary antibodies against PEF1 and β -Tubulin, respectively, followed by incubating with HRP-conjugated goat anti-rabbit secondary antibody. Images were developed using FeQ™ ECL Substrate Kit.