

Human PDX1 Knockdown Cell Line (WB-Validated)



Catalog #: C62554

Aliases

PDX1; Pancreatic And Duodenal Homeobox 1; IDX-1; STF-1; PDX-1; IUF-1; GSF; Islet/Duodenum Homeobox-1; Insulin Upstream Factor 1; Glucose-Sensitive Factor; MODY4; IPF1; Insulin Promoter Factor 1, Homeodomain Transcription Factor; Somatostatin-Transactivating Factor 1; Pancreas/Duodenum Homeobox Protein 1; Somatostatin Transcription Factor 1; Pancreatic-Duodenal Homeobox Factor 1; Insulin Promoter Factor 1; PAGEN1; IUF1; STF1

Background

Gene Name: PDX1

NCBI Gene Entry: [3651](#)

Storage

Store at liquid nitrogen for 1 year.

Kit Components

1. Human PDX1 Knockdown Cell Line (Wb-Validated)
2. Wild-type cell line

Parental Cell Line

Human cell line supplied by the client

Validation Methods

RT-qPCR, Western blotting (WB)

Shipping

Shipped on Dry Ice.

Instructions For Use

This knockdown cell line should be paired with wild-type cell line for use.

Note: This product is for research use only.

Validation Data

SUPPORT

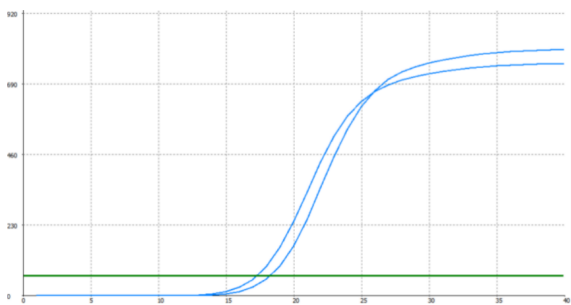
SUPPORT@GENUINBIOTECH.COM
TEL: +1-540-855-7041

ORDERS

SALES@GENUINBIOTECH.COM
FAX: +1-540-855-7041

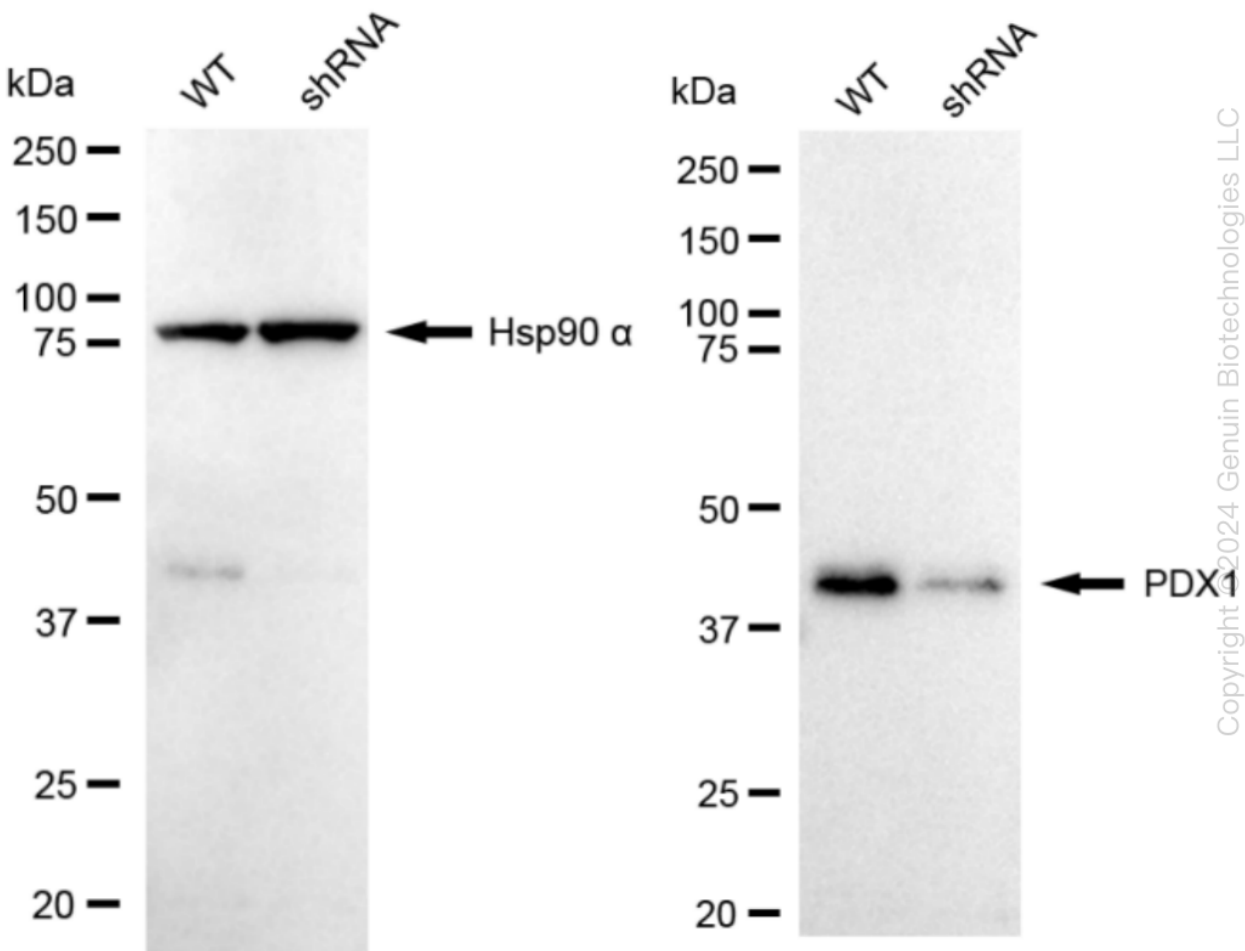
WWW.GENUINBIOTECH.COM

Human PDX1 Knockdown Cell Line (WB-Validated)



Genotype	Ct Value
Wild-Type	17.01
Knock-Down	18.06
$\Delta Ct (Ct_{KD}-Ct_{WT})$	1.05
% mRNA Reduction	↓ 52%

RT-qPCR analysis. HeLa cells were infected with PDX1-specific shRNA lentiviral particles, total RNA was extracted from wild-type and knockdown cells, RT-qPCR was performed using gene-specific primers. $\Delta Ct (Ct_{KD}-Ct_{WT})$ was used to calculate mRNA reduction (%) between wild-type and knockdown cells using the following formula: $(1-1/2^{\Delta Ct}) \times 100\%$.



Western blotting analysis. PDX1 protein expression in wild-type (WT) and shRNA knockdown (KD) HeLa cells was detected using Western blotting. Hsp90 α served as a loading control. The blots were incubated with primary antibodies (Cat#62554, 1:5,000) against PDX1 and Hsp90 α , respectively, followed by incubating with HRP-conjugated goat anti-rabbit secondary antibody

SUPPORT

SUPPORT@GENUINBIOTECH.COM
TEL: +1-540-855-7041

ORDERS

SALES@GENUINBIOTECH.COM
FAX: +1-540-855-7041

WWW.GENUINBIOTECH.COM

Human PDX1 Knockdown Cell Line (WB-Validated)

PAGE 3

(Cat#201, 1:20,000). Images were developed using FeQ™ ECL Substrate Kit (Cat#226).

SUPPORT

SUPPORT@GENUINBIOTECH.COM
TEL: +1-540-855-7041

ORDERS

SALES@GENUINBIOTECH.COM
FAX: +1-540-855-7041

WWW.GENUINBIOTECH.COM