

Human POLB Knockdown Cell Line (WB-Validated)



Catalog #: C62575

Aliases

POLB; DNA Polymerase Beta; Polymerase (DNA Directed), Beta; 5'-Deoxyribose-Phosphate Lyase; Polymerase (DNA) Beta; 5'-DRP Lyase; AP Lyase; DNA Polymerase Beta Subunit; DNA Pol Beta; EC 4.2.99.18; EC 4.2.99.-; EC 2.7.7.7

Background

Gene Name: POLB
NCBI Gene Entry: [5423](#)

Storage

Store at liquid nitrogen for 1 year.

Kit Components

1. Human POLB Knockdown Cell Line (Wb-Validated)
2. Wild-type cell line

Parental Cell Line

Human cell line supplied by the client

Validation Methods

RT-qPCR, Western blotting (WB)

Shipping

Shipped on Dry Ice.

Instructions For Use

This knockdown cell line should be paired with wild-type cell line for use.

Note: This product is for research use only.

Validation Data

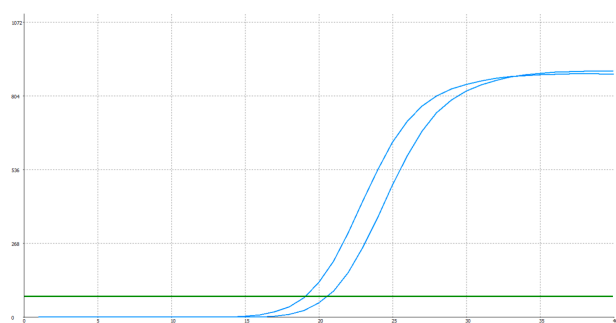
SUPPORT

SUPPORT@GENUINBIOTECH.COM
TEL: +1-540-855-7041

ORDERS

SALES@GENUINBIOTECH.COM
FAX: +1-540-855-7041

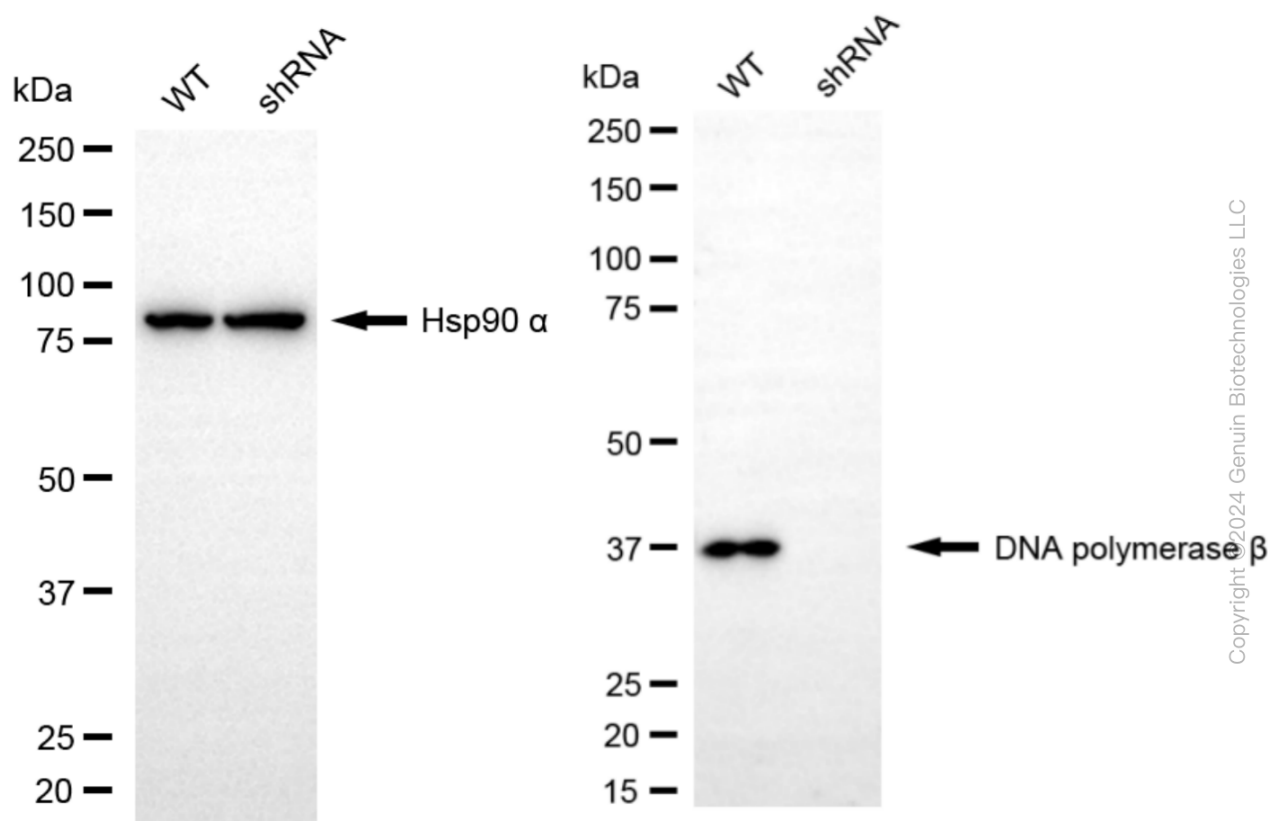
WWW.GENUINBIOTECH.COM



Genotype	Ct Value
Wild-Type	18.74
Knock-Down	20.28
$\Delta Ct (Ct_{KD} - Ct_{WT})$	1.54
% mRNA Reduction	↓ 66%

Copyright ©2025 Genuin Biotechnologies LLC

RT-qPCR analysis. HeLa cells were infected with POLB-specific shRNA lentiviral particles, total RNA was extracted from wild-type and knockdown cells, RT-qPCR was performed using gene-specific primers. $\Delta Ct (Ct_{KD} - Ct_{WT})$ was used to calculate mRNA reduction (%) between wild-type and knockdown cells using the following formula: $(1 - 1/2^{\Delta Ct}) \times 100\%$.



Copyright ©2024 Genuin Biotechnologies LLC

Western blotting analysis. POLB protein expression in wild-type (WT) and shRNA knockdown (KD) HeLa cells was detected using Western blotting. Hsp90 α served as a loading control. The blots were incubated with primary antibodies against POLB and Hsp90 α , respectively, followed by incubating with HRP-conjugated goat anti-rabbit secondary antibody. Images were developed using FeQ™ ECL Substrate Kit.