

# Human PTTG1 Knockdown Cell Line (WB-Validated)



**Catalog #: C62579**

## Aliases

PTTG1; PTTG1 Regulator Of Sister Chromatid SepaRation, Securin; Securin; HPTTG ; PTTG; EAP1; Tumor-Transforming Protein 1; ECRAR; TUTR1; Endogenous Cardiac RegeneRation-Associated Regulator; Pituitary Tumor-Transforming Gene 1 Protein; Pituitary Tumor-Transforming 1; ESP1-Associated Protein 1; Esp1-Associated Protein

## Background

Gene Name: PTTG1

NCBI Gene Entry: [9232](#)

## Storage

Store at liquid nitrogen for 1 year.

## Kit Components

1. Human PTTG1 Knockdown Cell Line (Wb-Validated)
2. Wild-type cell line

## Parental Cell Line

Human cell line supplied by the client

## Validation Methods

RT-qPCR, Western blotting (WB)

## Shipping

Shipped on Dry Ice.

## Instructions For Use

This knockdown cell line should be paired with wild-type cell line for use.

**Note:** This product is for research use only.

## Validation Data

---

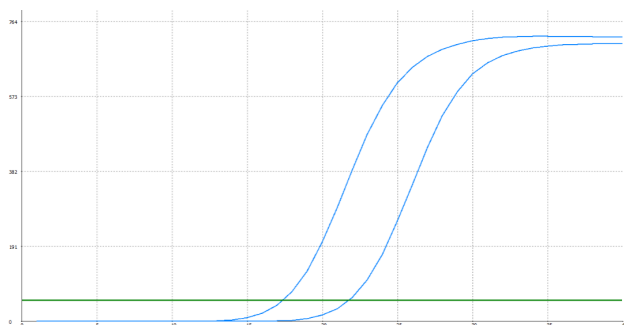
### SUPPORT

SUPPORT@GENUINBIOTECH.COM  
TEL: +1-540-855-7041

### ORDERS

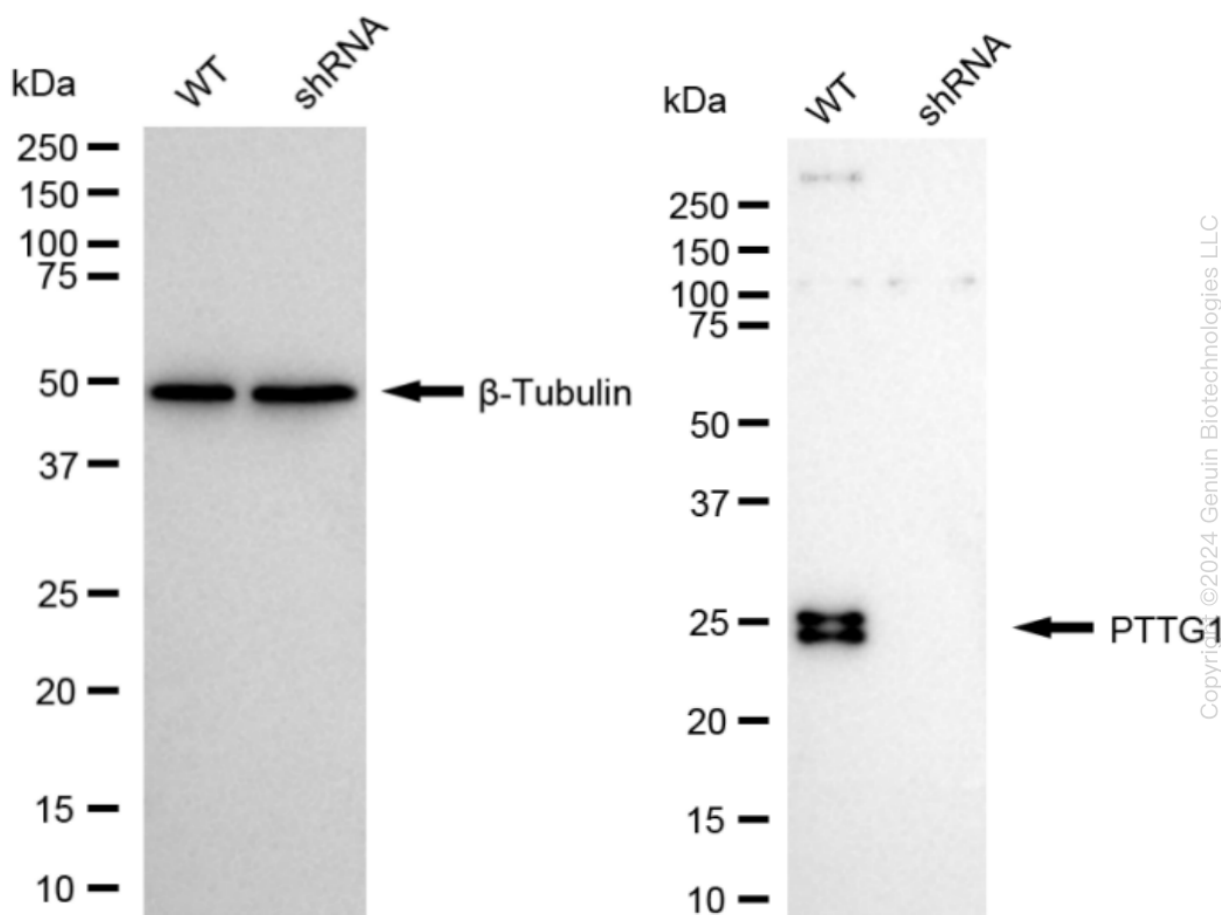
SALES@GENUINBIOTECH.COM  
FAX: +1-540-855-7041

[WWW.GENUINBIOTECH.COM](http://WWW.GENUINBIOTECH.COM)



Genotype	Ct Value
Wild-Type	17.30
Knock-Down	21.63
$\Delta Ct (Ct_{KD}-Ct_{WT})$	4.33
% mRNA Reduction	↓ 95%

RT-qPCR analysis. HeLa cells were infected with PTTG1-specific shRNA lentiviral particles, total RNA was extracted from wild-type and knockdown cells, RT-qPCR was performed using gene-specific primers.  $\Delta Ct (Ct_{KD}-Ct_{WT})$  was used to calculate mRNA reduction (%) between wild-type and knockdown cells using the following formula:  $(1-1/2^{\Delta Ct}) \times 100\%$ .



Western blotting analysis. PTTG1 protein expression in wild-type (WT) and shRNA knockdown (KD) HeLa cells was detected using Western blotting.  $\beta$ -Tubulin served as a loading control. The blots were incubated with primary antibodies against PTTG1 and  $\beta$ -Tubulin, respectively, followed by incubating with HRP-conjugated goat anti-rabbit secondary antibody. Images were developed using FeQ™ ECL Substrate Kit.