

Human SEPTIN2 Knockdown Cell Line (WB-Validated)



Catalog #: C62587

Aliases

SEPTIN2; Septin 2; KIAA0158; Septin-2; HNedd5; Pnutl3; DIFF6; NEDD5; SEPT2; Neural Precursor Cell Expressed, Developmentally Down-Regulated 5; NEDD-5; Neural Precursor Cell Expressed Developmentally Down-Regulated Protein 5; Epididymis Secretory Sperm Binding Protein

Background

Gene Name: SEPTIN2

NCBI Gene Entry: [4735](#)

Storage

Store at liquid nitrogen for 1 year.

Kit Components

1. Human SEPTIN2 Knockdown Cell Line (Wb-Validated)
2. Wild-type cell line

Parental Cell Line

Human cell line supplied by the client

Validation Methods

RT-qPCR, Western blotting (WB)

Shipping

Shipped on Dry Ice.

Instructions For Use

This knockdown cell line should be paired with wild-type cell line for use.

Note: This product is for research use only.

Validation Data

SUPPORT

SUPPORT@GENUINBIOTECH.COM
TEL: +1-540-855-7041

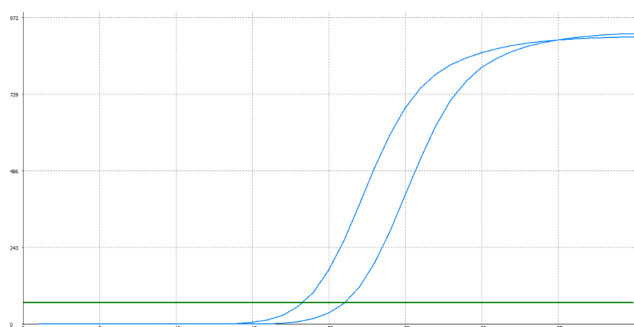
ORDERS

SALES@GENUINBIOTECH.COM
FAX: +1-540-855-7041

WWW.GENUINBIOTECH.COM

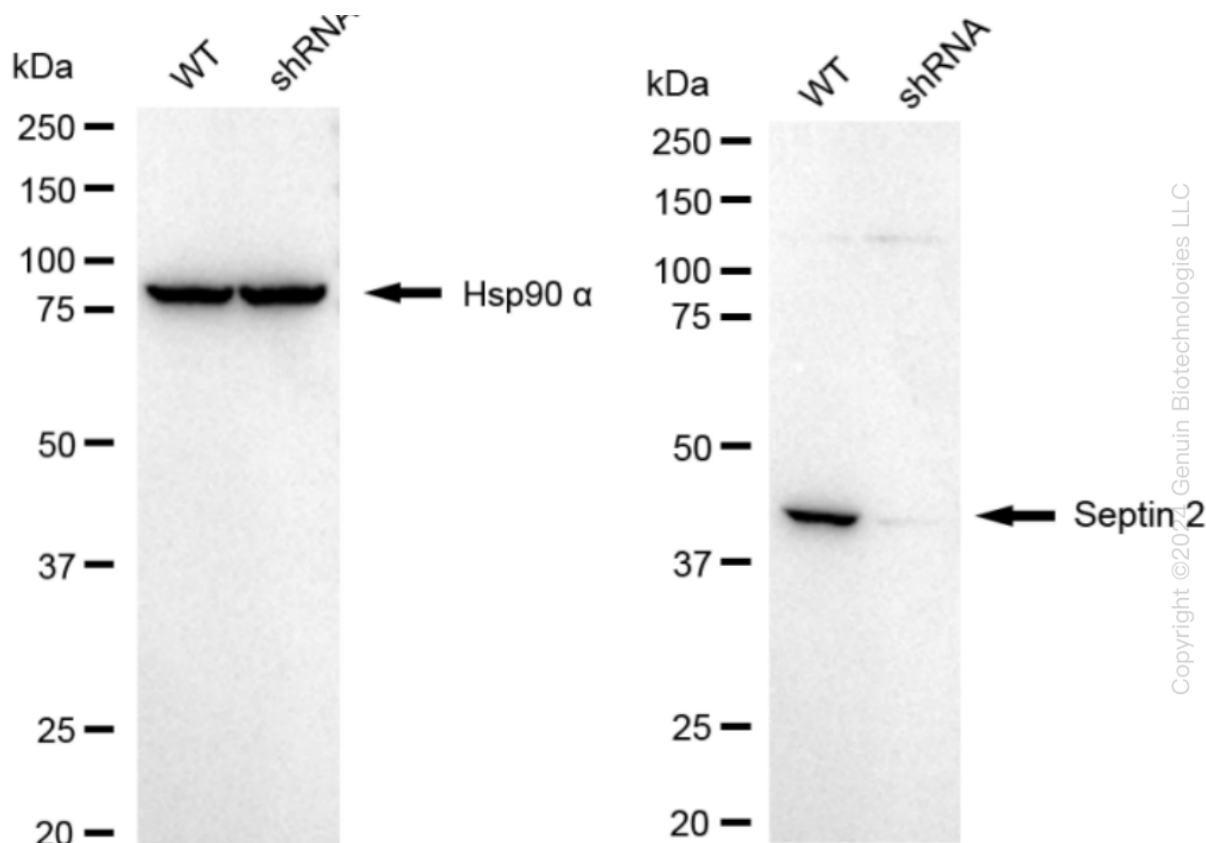
Human SEPTIN2 Knockdown Cell Line (WB-Validated)

PAGE 2



Genotype	Ct Value
Wild-Type	18.20
Knock-Down	20.98
ΔCt ($Ct_{KD} - Ct_{WT}$)	2.78
% mRNA Reduction	↓ 85%

RT-qPCR analysis. HeLa cells were infected with SEPTIN2-specific shRNA lentiviral particles, total RNA was extracted from wild-type and knockdown cells, RT-qPCR was performed using gene-specific primers. ΔCt ($Ct_{KD} - Ct_{WT}$) was used to calculate mRNA reduction (%) between wild-type and knockdown cells using the following formula: $(1 - 1/2^{\Delta Ct}) \times 100\%$.



Western blotting analysis. SEPTIN2 protein expression in wild-type (WT) and shRNA knockdown (KD) HeLa cells was detected using Western blotting. Hsp90 α served as a loading control. The blots were incubated with primary antibodies against SEPTIN2 and Hsp90 α , respectively, followed by incubating with HRP-conjugated goat anti-rabbit secondary antibody. Images were developed using FeQ™ ECL Substrate Kit.

SUPPORT

SUPPORT@GENUINBIOTECH.COM
TEL: +1-540-855-7041

ORDERS

SALES@GENUINBIOTECH.COM
FAX: +1-540-855-7041

WWW.GENUINBIOTECH.COM