

Human PRDX4 Knockdown Cell Line (WB-Validated)



Catalog #: C62596

Aliases

Peroxiredoxin 4; AOE37-2; Thioredoxin-Dependent Peroxide Reductase A0372; Thioredoxin-Dependent Peroxiredoxin 4; Thioredoxin Peroxidase A0372; Antioxidant Enzyme AOE372; Peroxiredoxin IV; Peroxiredoxin-4; Prx-IV; Epididymis Secretory Sperm Binding Protein Li 97n; Thioredoxin Peroxidase (Antioxidant Enzyme); EC 1.11.1.24; EC 1.11.1.15; HEL-S-97n; AOE372; PRX-4

Background

Gene Name: PRDX4

NCBI Gene Entry: [10549](#)

Storage

Store at liquid nitrogen for 1 year.

Kit Components

1. Human PRDX4 Knockdown Cell Line (Wb-Validated)
2. Wild-type cell line

Parental Cell Line

Human cell line supplied by the client

Validation Methods

RT-qPCR, Western blotting (WB)

Shipping

Shipped on Dry Ice.

Instructions For Use

This knockdown cell line should be paired with wild-type cell line for use.

Note: This product is for research use only.

Validation Data

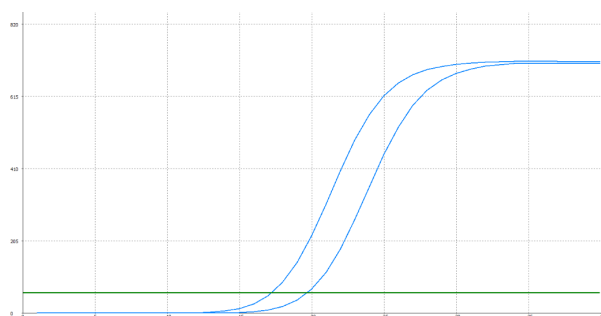
SUPPORT

SUPPORT@GENUINBIOTECH.COM
TEL: +1-540-855-7041

ORDERS

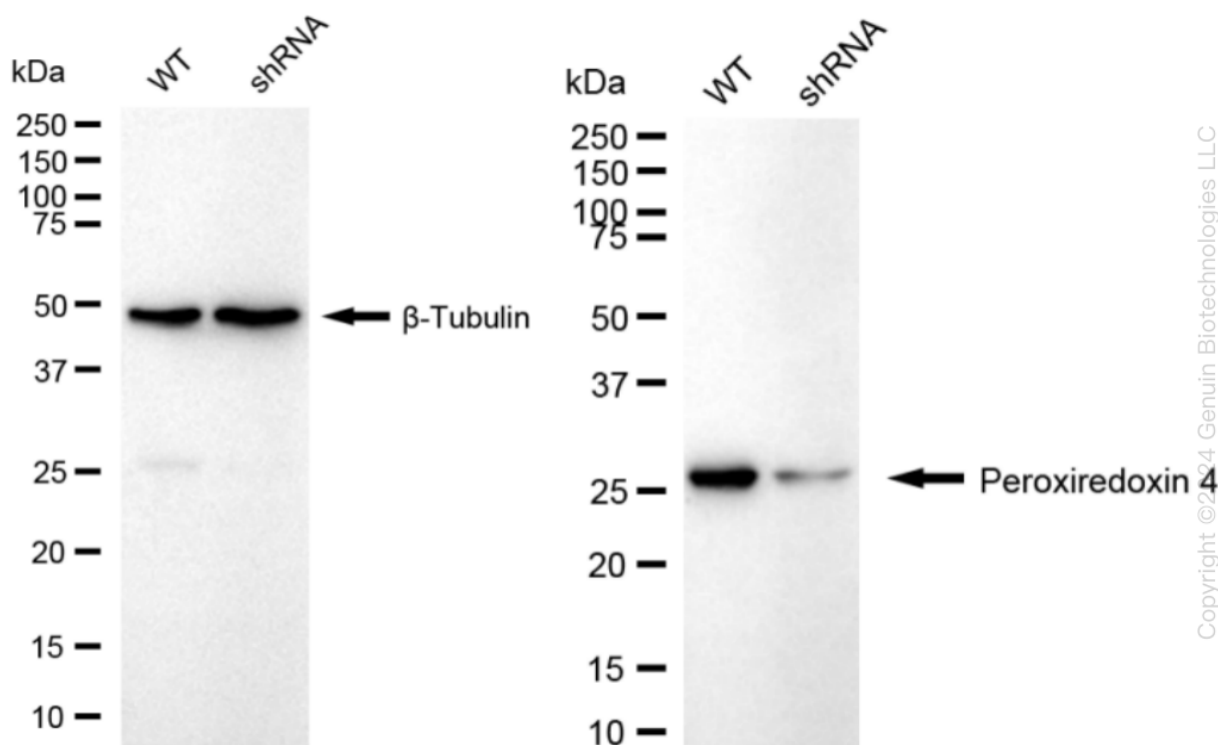
SALES@GENUINBIOTECH.COM
FAX: +1-540-855-7041

WWW.GENUINBIOTECH.COM



Genotype	Ct Value
Wild-Type	19.36
Knock-Down	21.22
$\Delta Ct (Ct_{KD}-Ct_{WT})$	1.86
% mRNA Reduction	↓ 72%

RT-qPCR analysis. HeLa cells were infected with PRDX4-specific shRNA lentiviral particles, total RNA was extracted from wild-type and knockdown cells, RT-qPCR was performed using gene-specific primers. $\Delta Ct (Ct_{KD}-Ct_{WT})$ was used to calculate mRNA reduction (%) between wild-type and knockdown cells using the following formula: $(1-1/2^{\Delta Ct}) \times 100\%$.



Western blotting analysis. PRDX4 protein expression in wild-type (WT) and shRNA knockdown (KD) HeLa cells was detected using Western blotting. β -Tubulin served as a loading control. The blots were incubated with primary antibodies against PRDX4 and β -Tubulin, respectively, followed by incubating with HRP-conjugated goat anti-rabbit secondary antibody. Images were developed using FeQ™ ECL Substrate Kit.