

Human PSMA1 Knockdown Cell Line (WB-Validated)



Catalog #: C62604

Aliases

PSMA1; Proteasome 20S Subunit Alpha 1; PROS30; HC2; NU; Proteasome (Prosome, Macropain)Subunit,Alpha Type,1; Multicatalytic Endopeptidase Complex Subunit C2; Proteasome Subunit Alpha Type-1; Proteasome Subunit Alpha 1; 30 KDa Prosomal Protein; Proteasome Component C2;Macropain Subunit C2; Proteasome Nu Chain; MGC14542; MGC14575; MGC14751; MGC21459; MGC22853; MGC23915; MGC1667; PROS-30; Alpha-6; Epididymis Secretory Protein Li 275; Proteasome Subunit, Alpha-Type, 1; Testicular Tissue Protein Li 150; Proteasome Subunit Alpha 6; Proteasome Subunit Alpha-6; Proteasome Subunit A6; Proteasome Subunit Nu; Macropain Subunit Nu; Protein P30-33K; EC 3.4.25.1; HEL-S-275; PSC2

Background

Gene Name: PSMA1
NCBI Gene Entry: [5682](#)

Storage

Store at liquid nitrogen for 1 year.

Kit Components

1. Human PSMA1 Knockdown Cell Line (Wb-Validated)
2. Wild-type cell line

Parental Cell Line

Human cell line supplied by the client

Validation Methods

RT-qPCR, Western blotting (WB)

Shipping

Shipped on Dry Ice.

Instructions For Use

This knockdown cell line should be paired with wild-type cell line for use.

Note: This product is for research use only.

SUPPORT

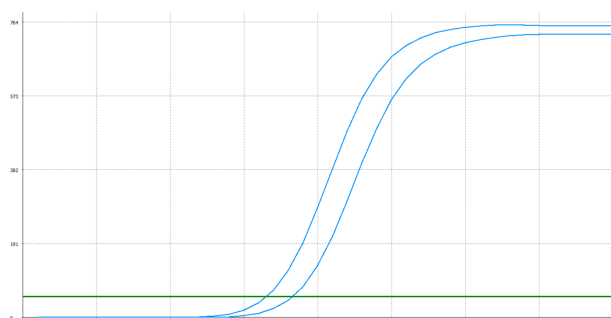
SUPPORT@GENUINBIOTECH.COM
TEL: +1-540-855-7041

ORDERS

SALES@GENUINBIOTECH.COM
FAX:+1-540-855-7041

WWW.GENUINBIOTECH.COM

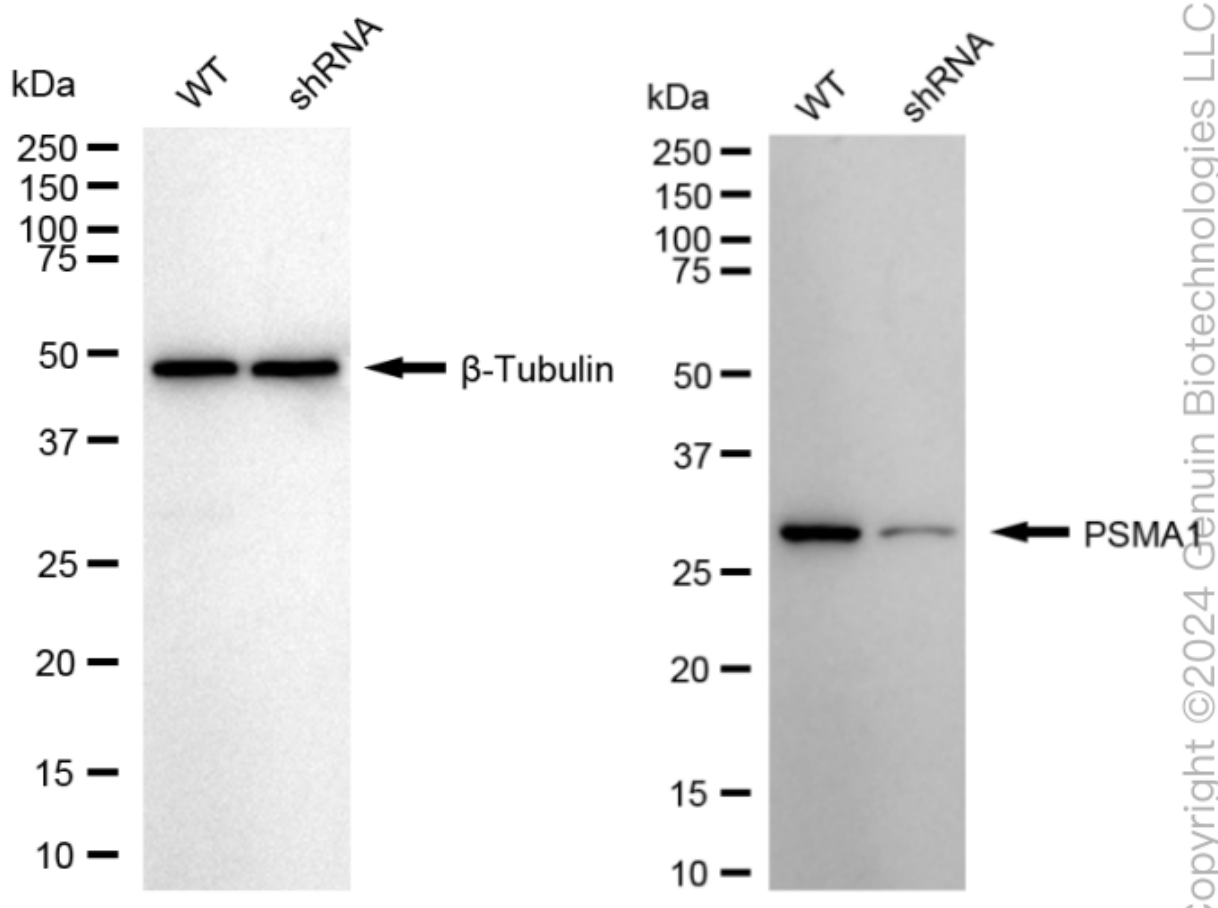
Validation Data



Genotype	Ct Value
Wild-Type	16.51
Knock-Down	18.23
$\Delta Ct (Ct_{KD} - Ct_{WT})$	1.72
% mRNA Reduction	↓ 70%

Copyright ©2025 Genuin Biotechnologies LLC

RT-qPCR analysis. HeLa cells were infected with PSMA1-specific shRNA lentiviral particles, total RNA was extracted from wild-type and knockdown cells, RT-qPCR was performed using gene-specific primers. $\Delta Ct (Ct_{KD} - Ct_{WT})$ was used to calculate mRNA reduction (%) between wild-type and knockdown cells using the following formula: $(1 - 1/2^{\Delta Ct}) \times 100\%$.



Copyright ©2024 Genuin Biotechnologies LLC

Western blotting analysis. PSMA1 protein expression in wild-type (WT) and shRNA knockdown (KD) HeLa cells was detected using Western blotting. β -Tubulin served as a loading control. The blots were incubated with primary antibodies against PSMA1 and β -Tubulin, respectively, followed by incubating with HRP-conjugated goat anti-rabbit secondary antibody. Images were

SUPPORT

SUPPORT@GENUINBIOTECH.COM
TEL: +1-540-855-7041

ORDERS

SALES@GENUINBIOTECH.COM
FAX: +1-540-855-7041

WWW.GENUINBIOTECH.COM

Human PSMA1 Knockdown Cell Line (WB-Validated)

PAGE 3

developed using FeQ™ ECL Substrate Kit.

SUPPORT

SUPPORT@GENUINBIOTECH.COM
TEL: +1-540-855-7041

ORDERS

SALES@GENUINBIOTECH.COM
FAX:+1-540-855-7041

WWW.GENUINBIOTECH.COM