

Human PERP Knockdown Cell Line (WB-Validated)



Catalog #: C62608

Aliases

PERP; P53 Apoptosis Effector Related To PMP22; KRTCAP1; PIGPC1; KCP1; THW; DJ496H19.1; P53 Apoptosis Effector Related To PMP-22; KeRatinocyte-Associated Protein 1; PERP, TP53 Apoptosis Effector; P53-Induced Protein PIGPC1; Transmembrane Protein THW; KCP-1; KeRatinocytes Associated Protein 1; KeRatinocyte Associated Protein 1; 1110017A08Rik; EKVP7; OLMS2

Background

Gene Name: PERP

NCBI Gene Entry: [64065](#)

Storage

Store at liquid nitrogen for 1 year.

Kit Components

1. Human PERP Knockdown Cell Line (Wb-Validated)
2. Wild-type cell line

Parental Cell Line

Human cell line supplied by the client

Validation Methods

RT-qPCR, Western blotting (WB)

Shipping

Shipped on Dry Ice.

Instructions For Use

This knockdown cell line should be paired with wild-type cell line for use.

Note: This product is for research use only.

Validation Data

SUPPORT

SUPPORT@GENUINBIOTECH.COM
TEL: +1-540-855-7041

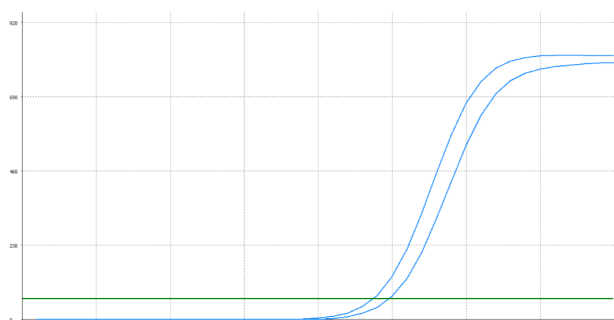
ORDERS

SALES@GENUINBIOTECH.COM
FAX: +1-540-855-7041

WWW.GENUINBIOTECH.COM

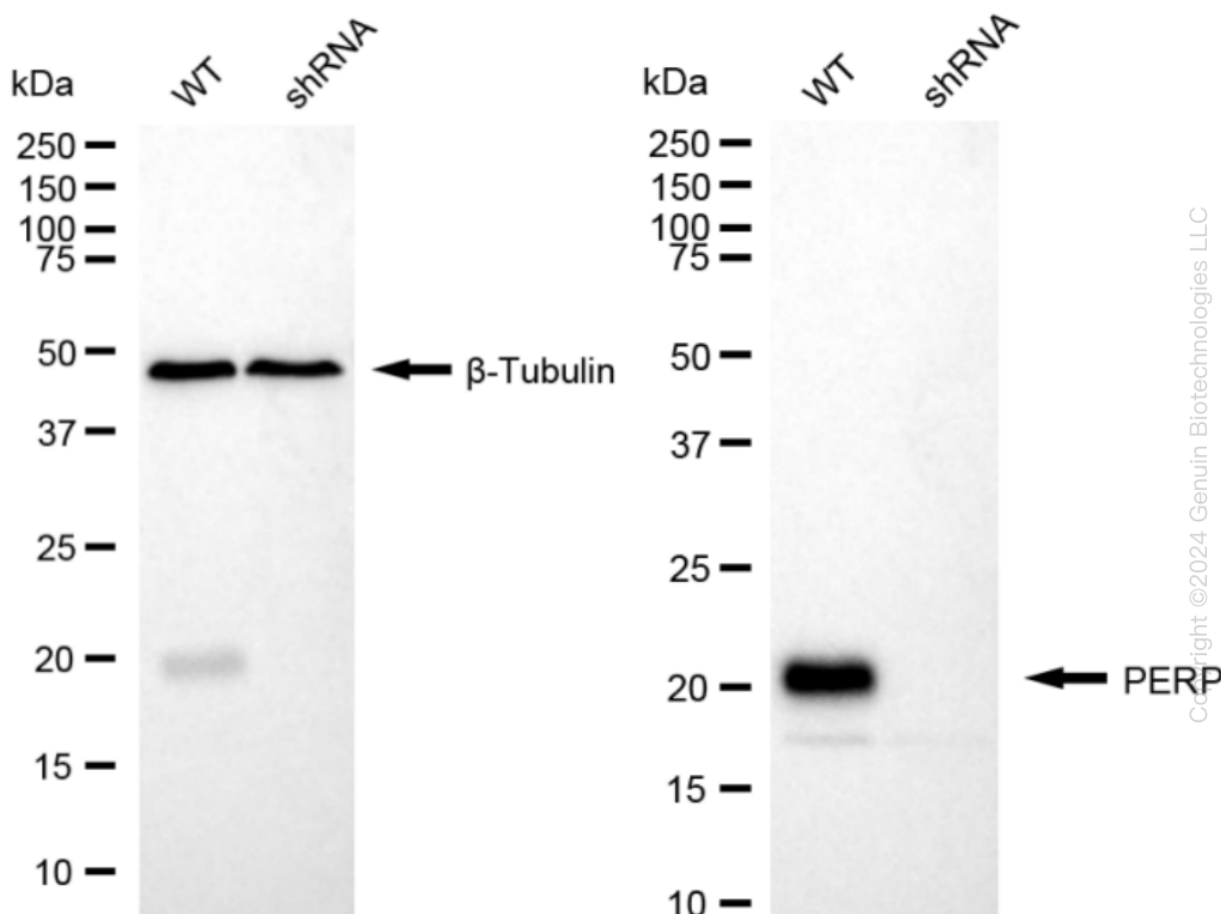
Human PERP Knockdown Cell Line (WB-Validated)

PAGE 2



Genotype	Ct Value
Wild-Type	23.51
Knock-Down	24.55
$\Delta Ct (Ct_{KD}-Ct_{WT})$	1.04
% mRNA Reduction	↓ 51%

RT-qPCR analysis. HeLa cells were infected with PERP-specific shRNA lentiviral particles, total RNA was extracted from wild-type and knockdown cells, RT-qPCR was performed using gene-specific primers. $\Delta Ct (Ct_{KD}-Ct_{WT})$ was used to calculate mRNA reduction (%) between wild-type and knockdown cells using the following formula: $(1-1/2^{\Delta Ct}) \times 100\%$.



Western blotting analysis. PERP protein expression in wild-type (WT) and shRNA knockdown (KD) HeLa cells was detected using Western blotting. β -Tubulin served as a loading control. The blots were incubated with primary antibodies against PERP and β -Tubulin, respectively, followed by incubating with HRP-conjugated goat anti-rabbit secondary antibody. Images were developed using FeQ™ ECL Substrate Kit.

SUPPORT

SUPPORT@GENUINBIOTECH.COM
TEL: +1-540-855-7041

ORDERS

SALES@GENUINBIOTECH.COM
FAX: +1-540-855-7041

WWW.GENUINBIOTECH.COM