

# Human USP39 Knockdown Cell Line (WB-Validated)



**Catalog #: C62621**

## Aliases

USP39; Ubiquitin Specific Peptidase 39; SNRNP65; CGI-21; SAD1; Small Nuclear Ribonucleoprotein 65kDa (U4/U6.U5); U4/U6.U5 Tri-SnRNP-Associated 65 KDa Protein; Ubiquitin Carboxyl-Terminal Hydrolase 39; Ubiquitin Specific Protease 39; SAD1 Homolog; SnRNP Assembly Defective 1 Homolog (S. Cerevisiae); Inactive Ubiquitin-Specific Peptidase 39; U4/U6.U5 Tri-SnRNP-Associated Protein 2; SnRNP Assembly Defective 1 Homolog; EC 3.4.19.12 ;HSPC332; 65K

## Background

Gene Name: USP39

NCBI Gene Entry: [10713](#)

## Storage

Store at liquid nitrogen for 1 year.

## Kit Components

1. Human USP39 Knockdown Cell Line (Wb-Validated)
2. Wild-type cell line

## Parental Cell Line

Human cell line supplied by the client

## Validation Methods

RT-qPCR, Western blotting (WB)

## Shipping

Shipped on Dry Ice.

## Instructions For Use

This knockdown cell line should be paired with wild-type cell line for use.

**Note:** This product is for research use only.

## Validation Data

---

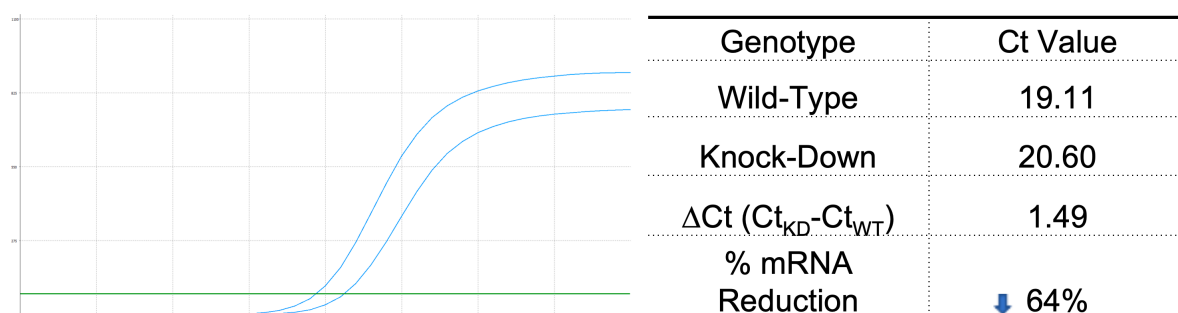
### SUPPORT

SUPPORT@GENUINBIOTECH.COM  
TEL: +1-540-855-7041

### ORDERS

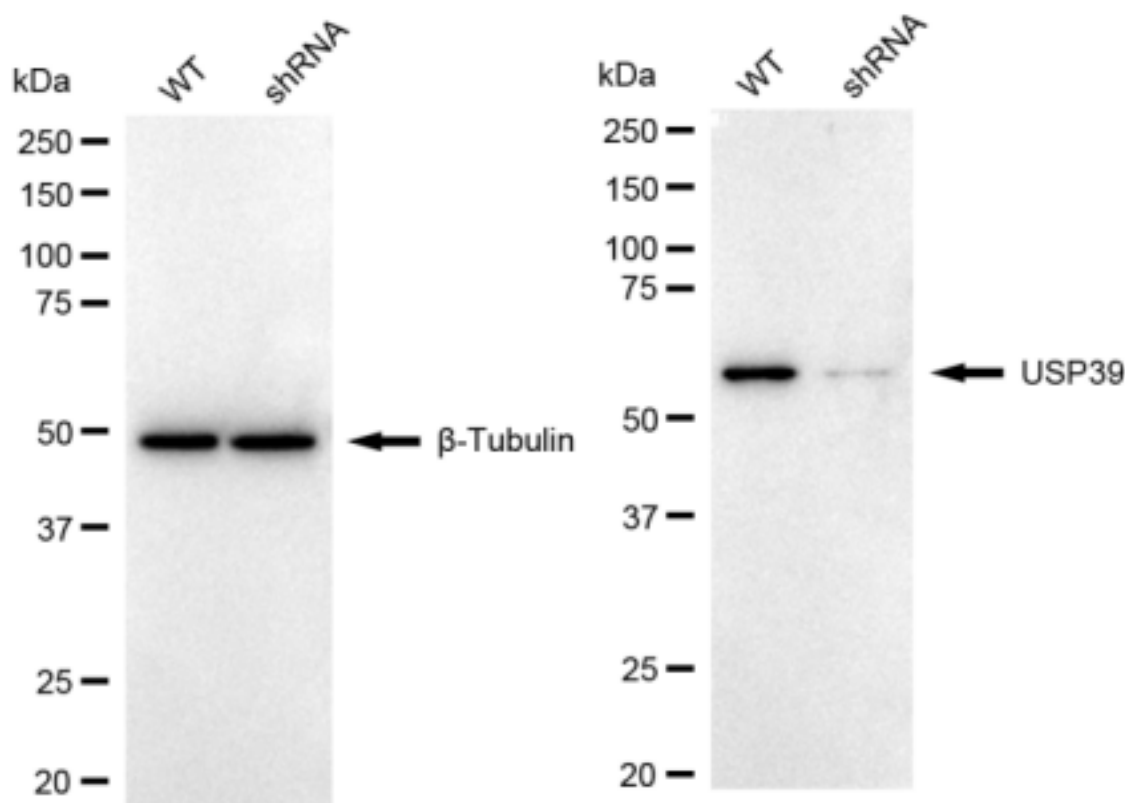
SALES@GENUINBIOTECH.COM  
FAX: +1-540-855-7041

[WWW.GENUINBIOTECH.COM](http://WWW.GENUINBIOTECH.COM)



Copyright ©2025 Genuin Biotechnologies LLC

RT-qPCR analysis. HeLa cells were infected with USP39-specific shRNA lentiviral particles, total RNA was extracted from wild-type and knockdown cells, RT-qPCR was performed using gene-specific primers.  $\Delta Ct (Ct_{KD} - Ct_{WT})$  was used to calculate mRNA reduction (%) between wild-type and knockdown cells using the following formula:  $(1 - 1/2^{\Delta Ct}) \times 100\%$ .



Copyright ©2024 Genuin Biotechnologies LLC

Western blotting analysis. USP39 protein expression in wild-type (WT) and shRNA knockdown (KD) HeLa cells was detected using Western blotting.  $\beta$ -Tubulin served as a loading control. The blots were incubated with primary antibodies against USP39 and  $\beta$ -Tubulin, respectively, followed by incubating with HRP-conjugated goat anti-rabbit secondary antibody. Images were developed using FeQ™ ECL Substrate Kit.