

Human SMARCA4 Knockdown Cell Line (WB-Validated)



Catalog #: C62628

Aliases

SMARCA4; SWI/SNF Related, Matrix Associated, Actin Dependent Regulator Of Chromatin, Subfamily A, Member 4; BRG1; Mitotic Growth And Transcription Activator; ATP-Dependent Helicase SMARCA4; SNF2-BETA; HSNF2b; BAF190; SNF2LB; SNF2L4; SNF2; SWI2; Global Transcription Activator Homologous Sequence; Sucrose Nonfermenting-Like 4; Transcription Activator BRG1; BRG1-Associated Factor 190A; Protein Brahma Homolog 1; BRM/SWI2-Related Gene 1; Homeotic Gene Regulator; Brahma Protein-Like 1; Nuclear Protein GRB1; Protein BRG-1; SNF2-Like 4; FLJ39786; BAF190A; SWI/SNF-Related Matrix-Associated Actin-Dependent Regulator Of Chromatin Subfamily A Member 4; EC 3.6.4.-; SNF2-Beta; EC 3.6.1; MRD16; RTPS2; SNF2B; CSS4

Background

Gene Name: SMARCA4
NCBI Gene Entry: [6597](#)

Storage

Store at liquid nitrogen for 1 year.

Kit Components

1. Human SMARCA4 Knockdown Cell Line (Wb-Validated)
2. Wild-type cell line

Parental Cell Line

Human cell line supplied by the client

Validation Methods

RT-qPCR, Western blotting (WB)

Shipping

Shipped on Dry Ice.

Instructions For Use

This knockdown cell line should be paired with wild-type cell line for use.

Note: This product is for research use only.

SUPPORT

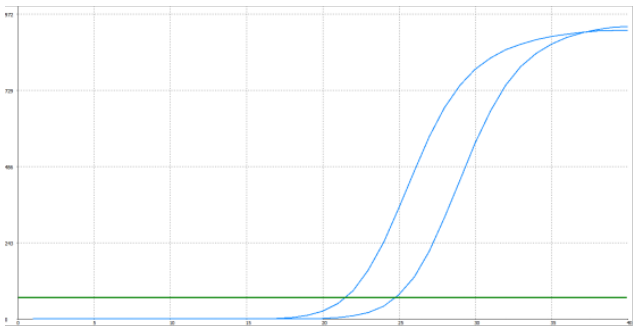
SUPPORT@GENUINBIOTECH.COM
TEL: +1-540-855-7041

ORDERS

SALES@GENUINBIOTECH.COM
FAX: +1-540-855-7041

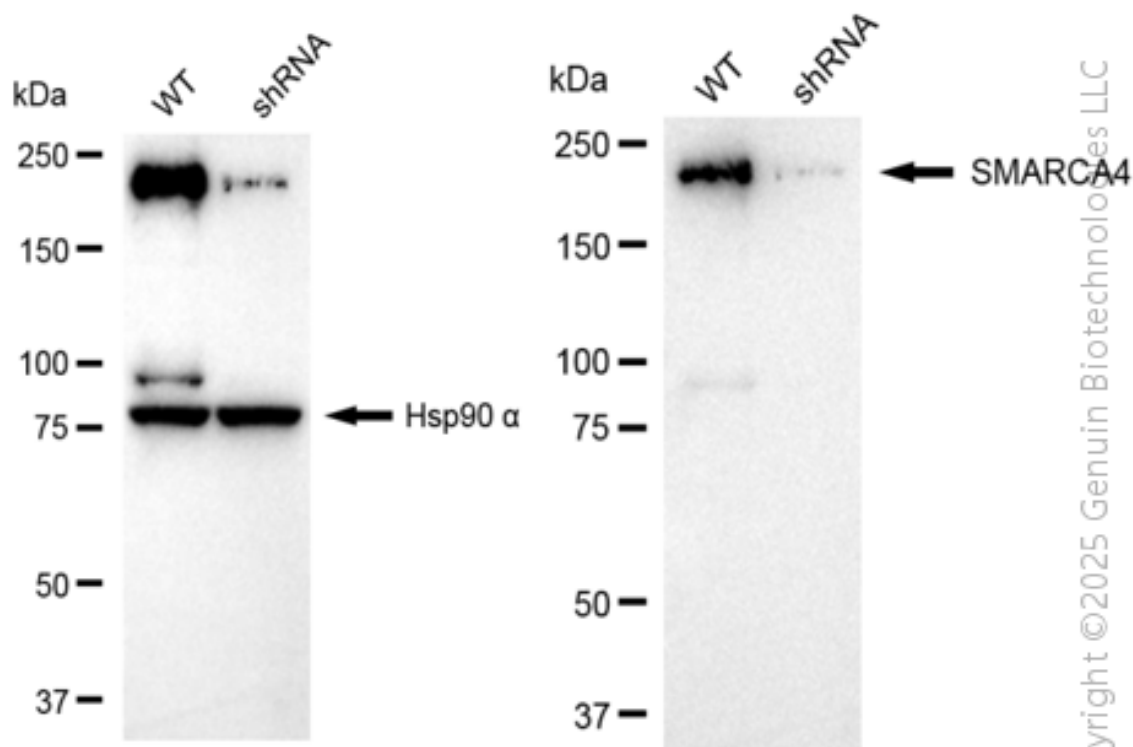
WWW.GENUINBIOTECH.COM

Validation Data



Genotype	Ct Value
Wild-Type	21.39
Knock-Down	24.69
Δ Ct (CtKD-CtWT)	3.30
% mRNA Reduction	90%

RT-qPCR analysis. HeLa cells were infected with SMARCA4-specific shRNA lentiviral particles, total RNA was extracted from wild-type and knockdown cells, RT-qPCR was performed using gene-specific primers. Δ Ct (CtKD-CtWT) was used to calculate mRNA reduction (%) between wild-type and knockdown cells using the following formula: $(1-1/2^{\Delta$ Ct) x 100%.



Western blotting analysis. SMARCA4 protein expression in wild-type (WT) and shRNA

SUPPORT

SUPPORT@GENUINBIOTECH.COM
TEL: +1-540-855-7041

ORDERS

SALES@GENUINBIOTECH.COM
FAX: +1-540-855-7041

WWW.GENUINBIOTECH.COM

knockdown (KD) HeLa cells was detected using Western blotting. Hsp90 α served as a loading control. The blots were incubated with primary antibodies against SMARCA4 and Hsp90 α , respectively, followed by incubating with HRP-conjugated goat anti-rabbit secondary antibody. Images were developed using FeQ™ ECL Substrate Kit.