

# Human USP14 Knockdown Cell Line (WB-Validated)



**Catalog #: C62631**

## Aliases

USP14; Ubiquitin Specific Peptidase 14; TGT; Ubp6; Ubiquitin Specific Peptidase 14 (TRNA-Guanine Transglycosylase); Ubiquitin Specific Protease 14 (TRNA-Guanine Transglycosylase); Ubiquitin Carboxyl-Terminal Hydrolase 14; Deubiquitinating Enzyme 14; Ubiquitin Thioesterase 14; TRNA-Guanine Transglycosylase, 60-KD Subunit; Ubiquitin-Specific Processing Protease 14; Ubiquitin-Specific-Processing Protease 14; Ubiquitin Thiolesterase 14; EC 3.4.19.12; EC 3.1.2.15

## Background

Gene Name: USP14

NCBI Gene Entry: [9097](#)

## Storage

Store at liquid nitrogen for 1 year.

## Kit Components

1. Human USP14 Knockdown Cell Line (Wb-Validated)
2. Wild-type cell line

## Parental Cell Line

Human cell line supplied by the client

## Validation Methods

RT-qPCR, Western blotting (WB)

## Shipping

Shipped on Dry Ice.

## Instructions For Use

This knockdown cell line should be paired with wild-type cell line for use.

**Note:** This product is for research use only.

## Validation Data

---

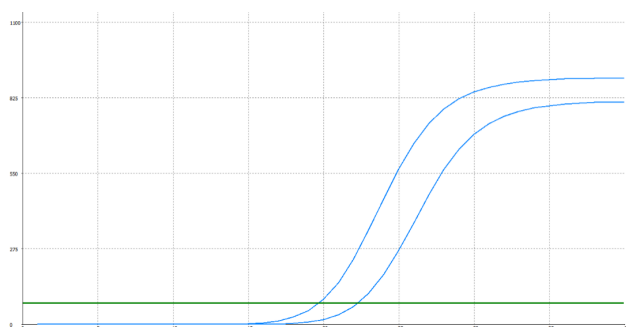
### SUPPORT

SUPPORT@GENUINBIOTECH.COM  
TEL: +1-540-855-7041

### ORDERS

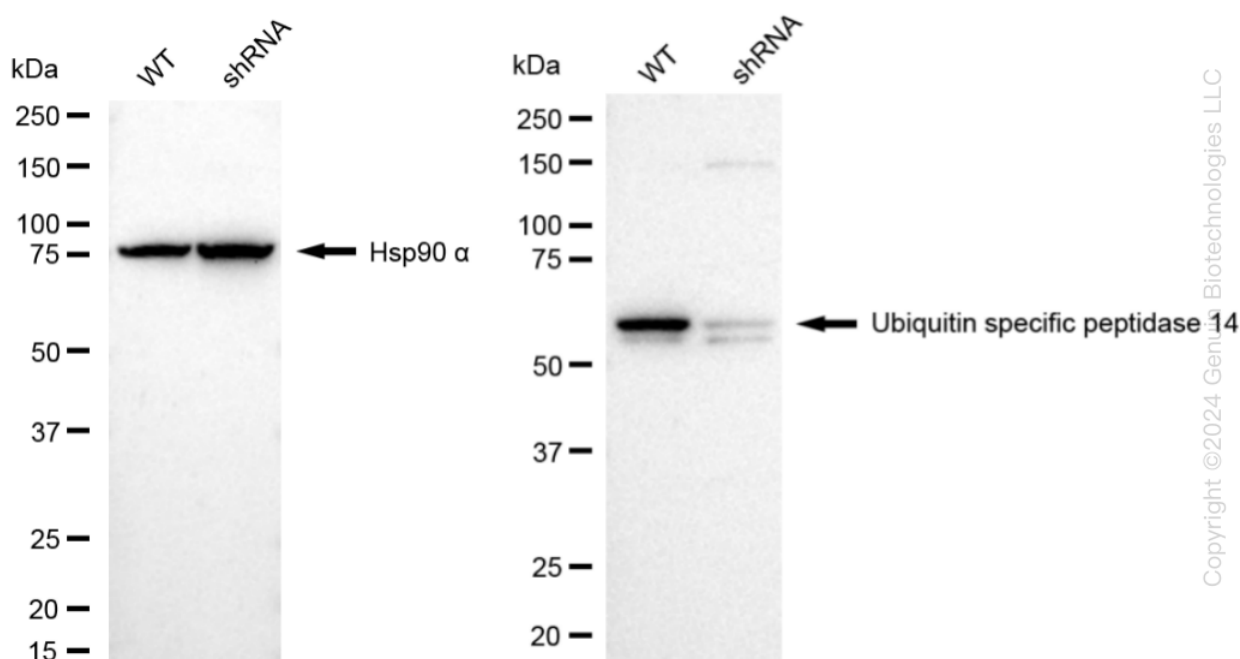
SALES@GENUINBIOTECH.COM  
FAX: +1-540-855-7041

[WWW.GENUINBIOTECH.COM](http://WWW.GENUINBIOTECH.COM)



Genotype	Ct Value
Wild-Type	19.33
Knock-Down	21.73
$\Delta Ct (Ct_{KD} - Ct_{WT})$	2.40
% mRNA Reduction	↓ 81%

RT-qPCR analysis. HeLa cells were infected with USP14-specific shRNA lentiviral particles, total RNA was extracted from wild-type and knockdown cells, RT-qPCR was performed using gene-specific primers.  $\Delta Ct (Ct_{KD} - Ct_{WT})$  was used to calculate mRNA reduction (%) between wild-type and knockdown cells using the following formula:  $(1 - 1/2^{\Delta Ct}) \times 100\%$ .



Western blotting analysis. USP14 protein expression in wild-type (WT) and shRNA knockdown (KD) HeLa cells was detected using Western blotting. Hsp90  $\alpha$  served as a loading control. The blots were incubated with primary antibodies against USP14 and Hsp90  $\alpha$ , respectively, followed by incubating with HRP-conjugated goat anti-rabbit secondary antibody. Images were developed using FeQ™ ECL Substrate Kit.