

Human UQCRC2 Knockdown Cell Line (WB-Validated)



Catalog #: C62633

Aliases

UQCRC2; Ubiquinol-Cytochrome C Reductase Core Protein 2; UQCR2; QCR2; Ubiquinol-Cytochrome-C Reductase Complex Core Protein 2; Ubiquinol-Cytochrome C Reductase Core Protein II; Cytochrome B-C1 Complex Subunit 2, Mitochondrial; Complex III Subunit 2; Cytochrome Bc-1 Complex Core Protein II; Core Protein II; MC3DN5

Background

Gene Name: UQCRC2

NCBI Gene Entry: [7385](#)

Storage

Store at liquid nitrogen for 1 year.

Kit Components

1. Human UQCRC2 Knockdown Cell Line (Wb-Validated)
2. Wild-type cell line

Parental Cell Line

Human cell line supplied by the client

Validation Methods

RT-qPCR, Western blotting (WB)

Shipping

Shipped on Dry Ice.

Instructions For Use

This knockdown cell line should be paired with wild-type cell line for use.

Note: This product is for research use only.

Validation Data

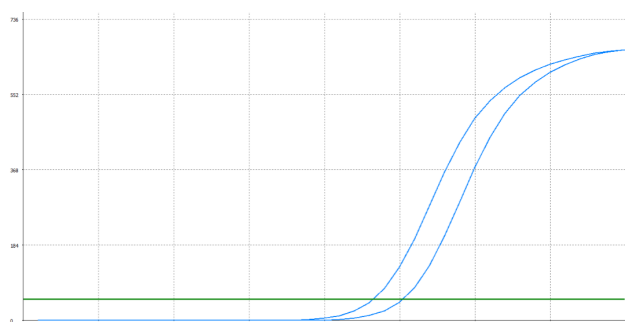
SUPPORT

SUPPORT@GENUINBIOTECH.COM
TEL: +1-540-855-7041

ORDERS

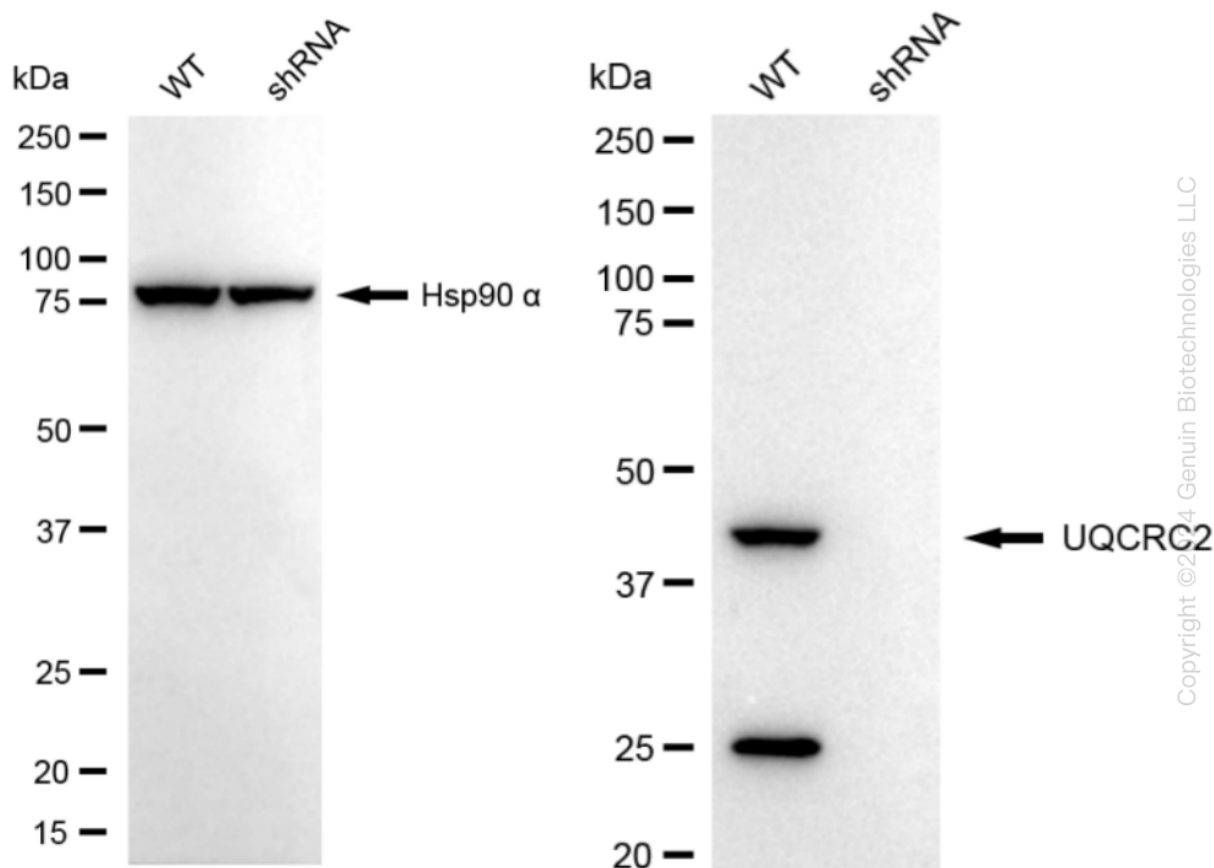
SALES@GENUINBIOTECH.COM
FAX: +1-540-855-7041

WWW.GENUINBIOTECH.COM



Genotype	Ct Value
Wild-Type	23.09
Knock-Down	25.06
$\Delta Ct (Ct_{KD} - Ct_{WT})$	1.97
% mRNA Reduction	↓ 74%

RT-qPCR analysis. HT-1080 cells were infected with UQCRC2-specific shRNA lentiviral particles, total RNA was extracted from wild-type and knockdown cells, RT-qPCR was performed using gene-specific primers. $\Delta Ct (Ct_{KD} - Ct_{WT})$ was used to calculate mRNA reduction (%) between wild-type and knockdown cells using the following formula: $(1 - 1/2^{\Delta Ct}) \times 100\%$.



Western blotting analysis. UQCRC2 protein expression in wild-type (WT) and shRNA knockdown (KD) HT-1080 cells was detected using Western blotting. Hsp90 α served as a loading control. The blots were incubated with primary antibodies against UQCRC2 and Hsp90 α , respectively, followed by incubating with HRP-conjugated goat anti-rabbit secondary antibody. Images were developed using FeQ™ ECL Substrate Kit.