

Human VPS28 Knockdown Cell Line (WB-Validated)



Catalog #: C62637

Aliases

VPS28; VPS28 Subunit Of ESCRT-I ; CIIA; Vacuolar Protein Sorting-Associated Protein 28 Homolog; ESCRT-I Complex Subunit VPS28; VPS28, ESCRT-I Subunit; Vacuolar Protein Sorting 28 Homolog (S. Cerevisiae); Vacuolar Protein Sorting 28-Like Protein; Yeast Class E Protein Vps28p Homolog; Vacuolar Protein Sorting 28 (Yeast); Vacuolar Protein Sorting 28 Homolog; H-Vps28

Background

Gene Name: VPS28

NCBI Gene Entry: [51160](#)

Storage

Store at liquid nitrogen for 1 year.

Kit Components

1. Human VPS28 Knockdown Cell Line (Wb-Validated)
2. Wild-type cell line

Parental Cell Line

Human cell line supplied by the client

Validation Methods

RT-qPCR, Western blotting (WB)

Shipping

Shipped on Dry Ice.

Instructions For Use

This knockdown cell line should be paired with wild-type cell line for use.

Note: This product is for research use only.

Validation Data

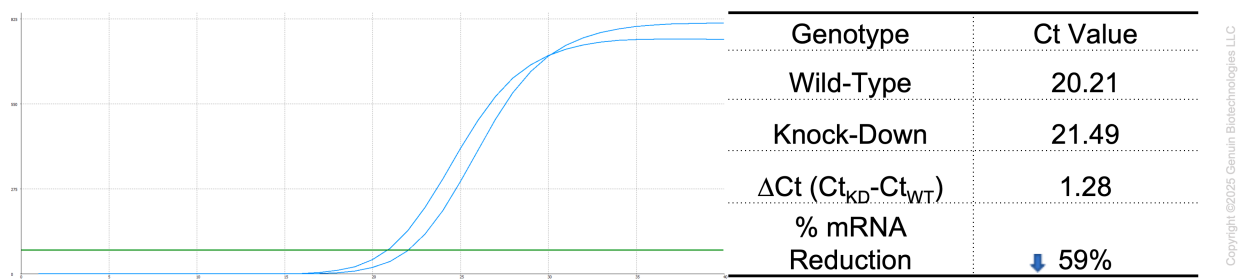
SUPPORT

SUPPORT@GENUINBIOTECH.COM
TEL: +1-540-855-7041

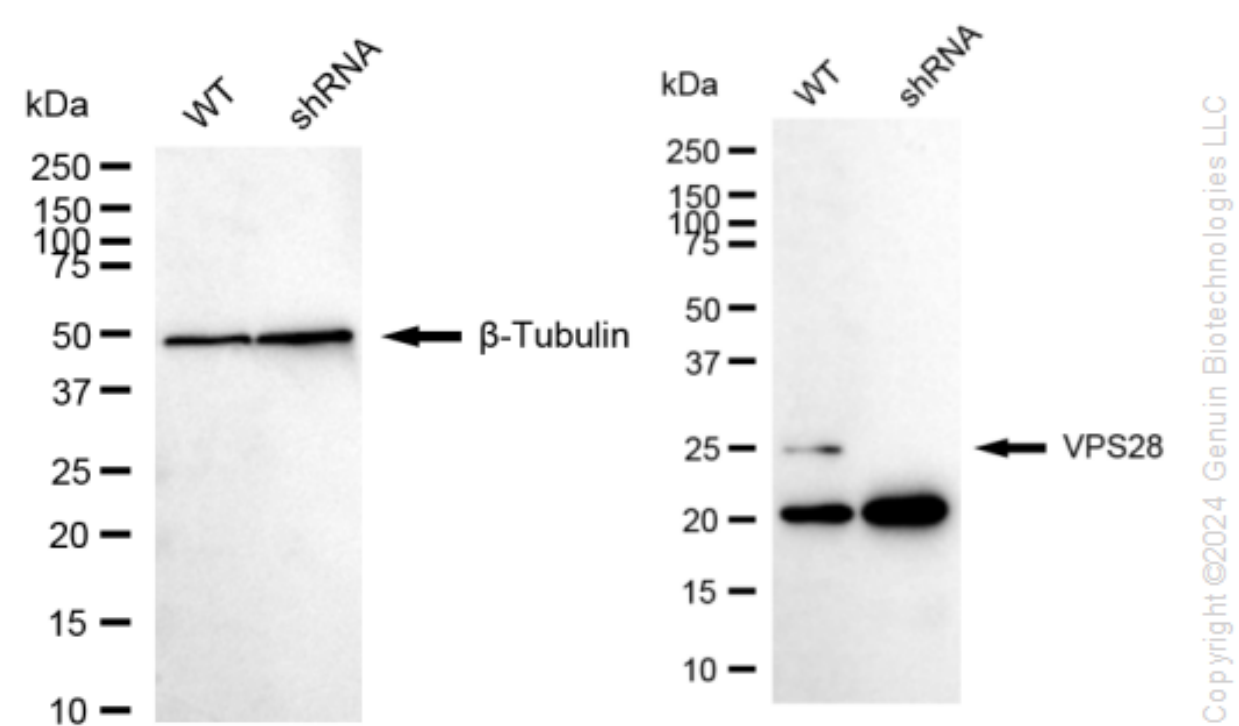
ORDERS

SALES@GENUINBIOTECH.COM
FAX: +1-540-855-7041

WWW.GENUINBIOTECH.COM



RT-qPCR analysis. HeLa cells were infected with VPS28-specific shRNA lentiviral particles, total RNA was extracted from wild-type and knockdown cells, RT-qPCR was performed using gene-specific primers. $\Delta Ct (Ct_{KD} - Ct_{WT})$ was used to calculate mRNA reduction (%) between wild-type and knockdown cells using the following formula: $(1 - 1/2^{\Delta Ct}) \times 100\%$.



Western blotting analysis. VPS28 protein expression in wild-type (WT) and shRNA knockdown (KD) HeLa cells was detected using Western blotting. β -Tubulin served as a loading control. The blots were incubated with primary antibodies against VPS28 and β -Tubulin, respectively, followed by incubating with HRP-conjugated goat anti-mouse secondary antibody. Images were developed using FeQ™ ECL Substrate Kit.