

Human UBE4B Knockdown Cell Line (WB-Validated)



Catalog #: C62638

Aliases

UBE4B; Ubiquitination Factor E4B; UFD2; KIAA0684; UBOX3; E4; Ubiquitination Factor E4B (UFD2 Homolog, Yeast); RING-Type E3 Ubiquitin Transferase E4 B; Ubiquitin Conjugation Factor E4 B; HDNB1; Ubiquitination Factor E4B (Homologous To Yeast UFD2); Homozygously Deleted In Neuroblastoma-1; Homozygously Deleted In Neuroblastoma 1; Ubiquitin-Fusion Degradation Protein 2; Ubiquitin Fusion Degradation Protein 2; Homologous To Yeast UFD2; EC 2.3.2.27; UFD2A

Background

Gene Name: UBE4B

NCBI Gene Entry: [10277](#)

Storage

Store at liquid nitrogen for 1 year.

Kit Components

1. Human UBE4B Knockdown Cell Line (Wb-Validated)
2. Wild-type cell line

Parental Cell Line

Human cell line supplied by the client

Validation Methods

RT-qPCR, Western blotting (WB)

Shipping

Shipped on Dry Ice.

Instructions For Use

This knockdown cell line should be paired with wild-type cell line for use.

Note: This product is for research use only.

Validation Data

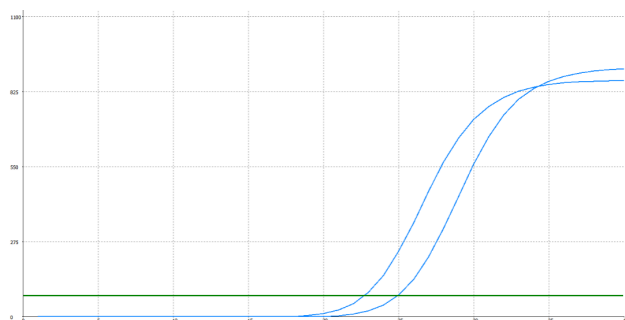
SUPPORT

SUPPORT@GENUINBIOTECH.COM
TEL: +1-540-855-7041

ORDERS

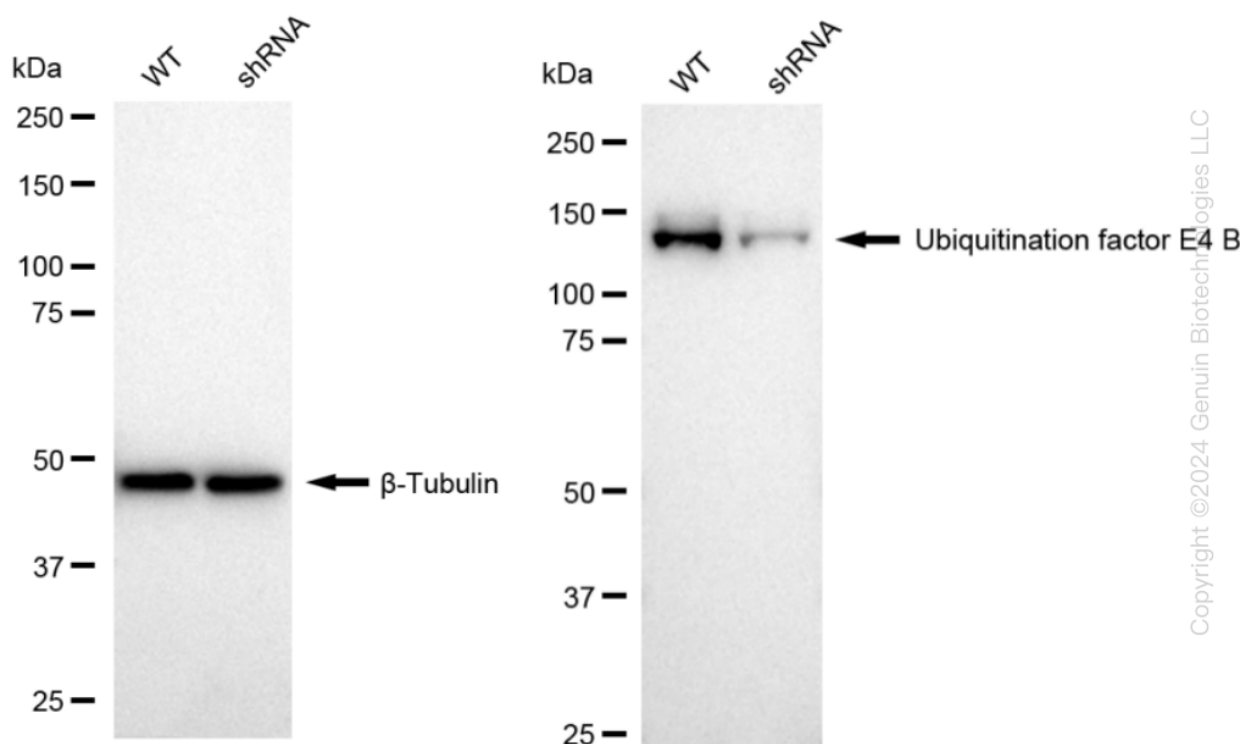
SALES@GENUINBIOTECH.COM
FAX: +1-540-855-7041

WWW.GENUINBIOTECH.COM



Genotype	Ct Value
Wild-Type	19.36
Knock-Down	21.22
$\Delta Ct (Ct_{KD}-Ct_{WT})$	1.86
% mRNA Reduction	↓ 72%

RT-qPCR analysis. HeLa cells were infected with UBE4B-specific shRNA lentiviral particles, total RNA was extracted from wild-type and knockdown cells, RT-qPCR was performed using gene-specific primers. $\Delta Ct (Ct_{KD}-Ct_{WT})$ was used to calculate mRNA reduction (%) between wild-type and knockdown cells using the following formula: $(1-1/2^{\Delta Ct}) \times 100\%$.



Western blotting analysis. UBE4B protein expression in wild-type (WT) and shRNA knockdown (KD) HeLa cells was detected using Western blotting. β -Tubulin served as a loading control. The blots were incubated with primary antibodies against UBE4B and β -Tubulin, respectively, followed by incubating with HRP-conjugated goat anti-rabbit secondary antibody. Images were developed using FeQ™ ECL Substrate Kit.