

Human UBE4A Knockdown Cell Line (WB-Validated)



Catalog #: C62639

Aliases

UBE4A; Ubiquitination Factor E4A; KIAA0126; UBOX2; UFD2; E4; Ubiquitination Factor E4A (UFD2 Homolog, Yeast); RING-Type E3 Ubiquitin Transferase E4 A; Ubiquitin Conjugation Factor E4 A; Ubiquitination Factor E4A (Homologous To Yeast UFD2); EC 2.3.2.27; NEDHMS

Background

Gene Name: UBE4A

NCBI Gene Entry: [9354](#)

Storage

Store at liquid nitrogen for 1 year.

Kit Components

1. Human UBE4A Knockdown Cell Line (Wb-Validated)
2. Wild-type cell line

Parental Cell Line

Human cell line supplied by the client

Validation Methods

RT-qPCR, Western blotting (WB)

Shipping

Shipped on Dry Ice.

Instructions For Use

This knockdown cell line should be paired with wild-type cell line for use.

Note: This product is for research use only.

Validation Data

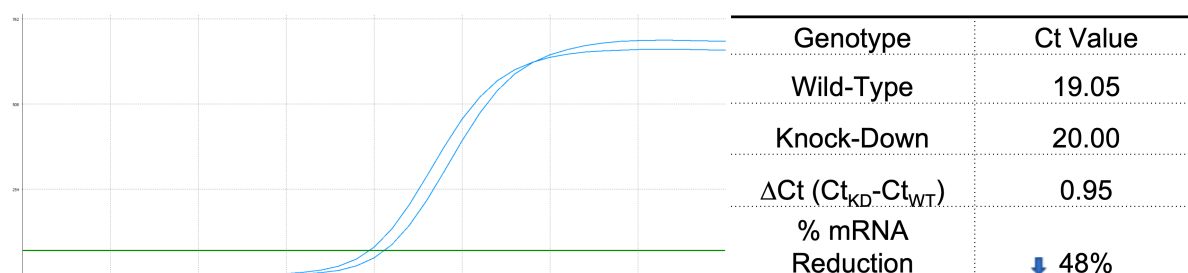
SUPPORT

SUPPORT@GENUINBIOTECH.COM
TEL: +1-540-855-7041

ORDERS

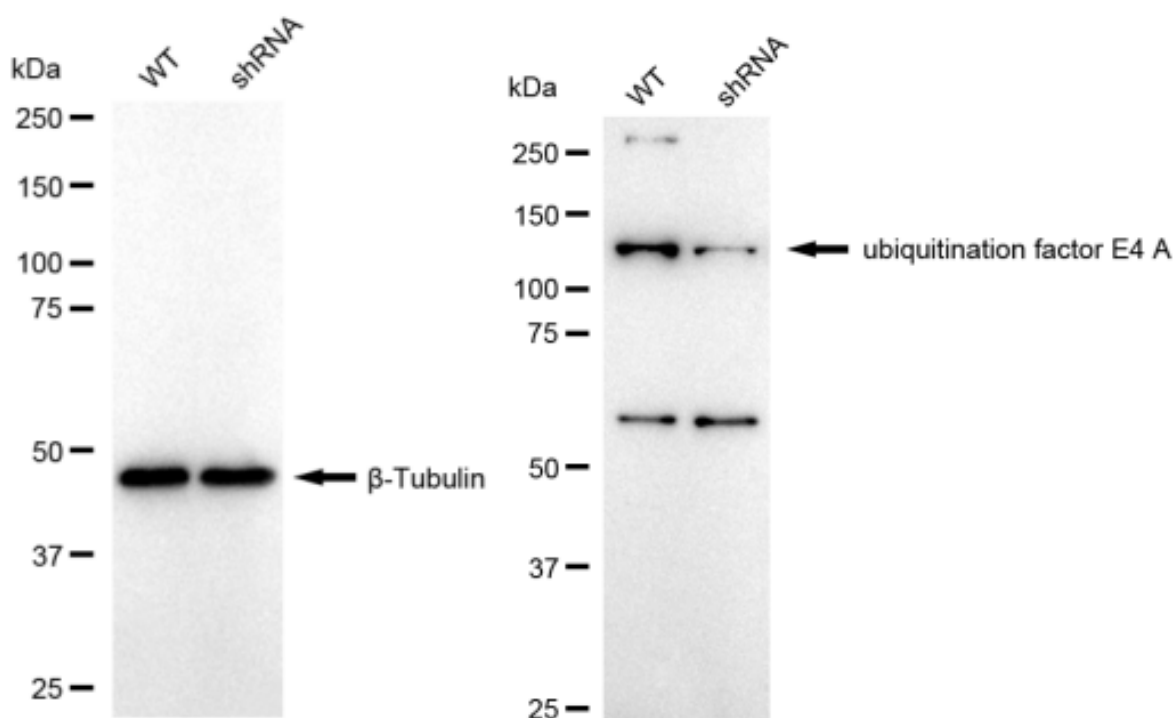
SALES@GENUINBIOTECH.COM
FAX: +1-540-855-7041

WWW.GENUINBIOTECH.COM



Copyright ©2025 Genuin Biotechnologies LLC

RT-qPCR analysis. HeLa cells were infected with UBE4A-specific shRNA lentiviral particles, total RNA was extracted from wild-type and knockdown cells, RT-qPCR was performed using gene-specific primers. $\Delta Ct (Ct_{KD} - Ct_{WT})$ was used to calculate mRNA reduction (%) between wild-type and knockdown cells using the following formula: $(1 - 1/2^{\Delta Ct}) \times 100\%$.



Copyright ©2024 Genuin Biotechnologies LLC

Western blotting analysis. UBE4A protein expression in wild-type (WT) and shRNA knockdown (KD) HeLa cells was detected using Western blotting. β -Tubulin served as a loading control. The blots were incubated with primary antibodies against UBE4A and β -Tubulin, respectively, followed by incubating with HRP-conjugated goat anti-rabbit secondary antibody. Images were developed using FeQ™ ECL Substrate Kit.