

Human TNFRSF12A Knockdown Cell Line (WB-Validated)



Catalog #: C62645

Aliases

TNFRSF12A; TNF Receptor Superfamily Member 12A; TweakR; FN14; CD266; Fibroblast Growth Factor-Inducible Immediate-Early Response Protein 14; Tumor Necrosis Factor Receptor Superfamily Member 12A; FGF-Inducible 14; Tweak-Receptor; Tumor Necrosis Factor Receptor Superfamily, Member 12A; Type I Transmembrane Protein Fn14; CD266 Antigen

Background

Gene Name: TNFRSF12A

NCBI Gene Entry: [51330](#)

Storage

Store at liquid nitrogen for 1 year.

Kit Components

1. Human TNFRSF12A Knockdown Cell Line (Wb-Validated)
2. Wild-type cell line

Parental Cell Line

Human cell line supplied by the client

Validation Methods

RT-qPCR, Western blotting (WB)

Shipping

Shipped on Dry Ice.

Instructions For Use

This knockdown cell line should be paired with wild-type cell line for use.

Note: This product is for research use only.

Validation Data

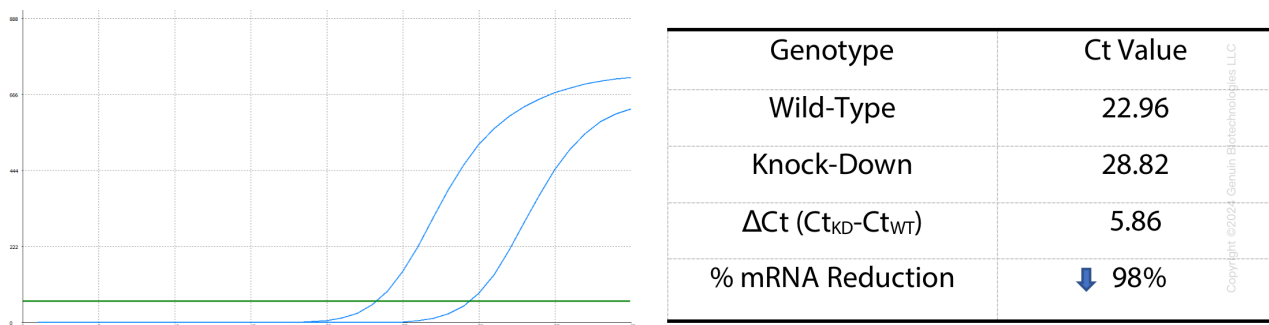
SUPPORT

SUPPORT@GENUINBIOTECH.COM
TEL: +1-540-855-7041

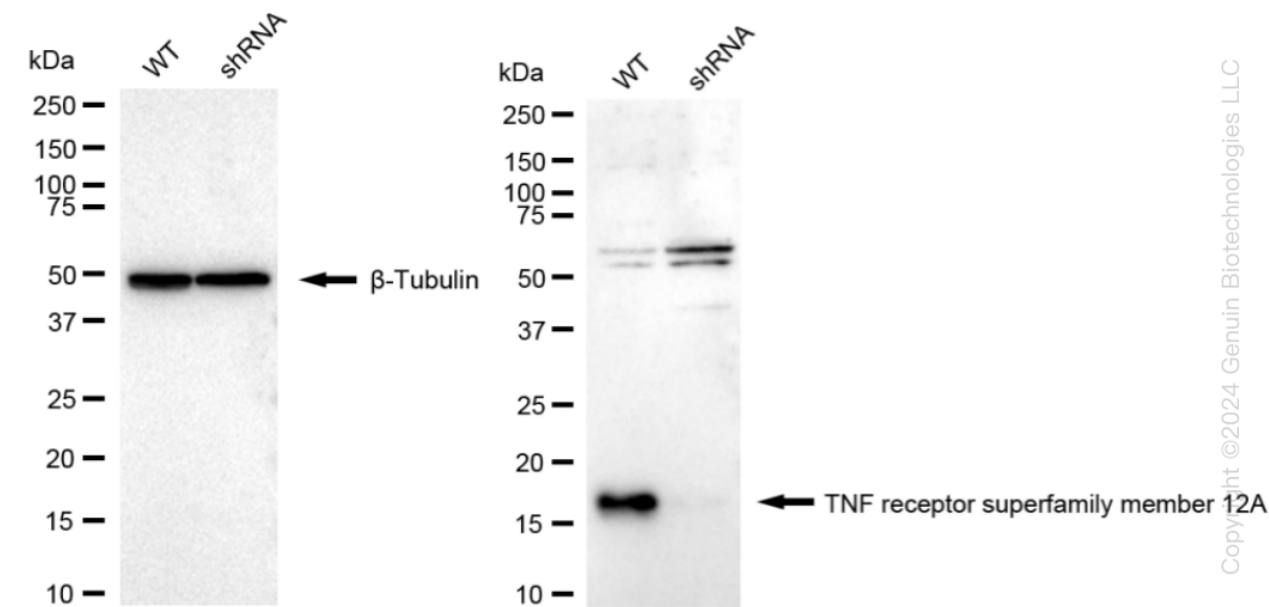
ORDERS

SALES@GENUINBIOTECH.COM
FAX: +1-540-855-7041

WWW.GENUINBIOTECH.COM



RT-qPCR analysis. HeLa cells were infected with TNFRSF12A-specific shRNA lentiviral particles, total RNA was extracted from wild-type and knockdown cells, RT-qPCR was performed using gene-specific primers. $\Delta Ct (Ct_{KD}-Ct_{WT})$ was used to calculate mRNA reduction (%) between wild-type and knockdown cells using the following formula: $(1-1/2^{\Delta Ct}) \times 100\%$.



Western blotting analysis. TNFRSF12A protein expression in wild-type (WT) and shRNA knockdown (KD) HeLa cells was detected using Western blotting. β -Tubulin served as a loading control. The blots were incubated with primary antibodies against TNFRSF12A and β -Tubulin, respectively, followed by incubating with HRP-conjugated goat anti-rabbit secondary antibody. Images were developed using FeQ™ ECL Substrate Kit.