

# Human ZEB1 Knockdown Cell Line (WB-Validated)



**Catalog #: C62657**

## Aliases

ZEB1; Zinc Finger E-Box Binding Homeobox 1; AREB6; Zfhx1a; Zfhbp; FECD6; TCF8; BZP; Transcription Factor 8 (Represses Interleukin 2 Expression); Posterior Polymorphous Corneal Dystrophy 3; Zinc Finger E-Box-Binding Homeobox 1; Negative Regulator Of IL2; NIL-2-A; PPCD3; ZEB; Zinc Finger Homeodomain Enhancer-Binding Protein; Delta-Crystallin Enhancer Binding Factor 1; NIL-2-A Zinc Finger Protein; Transcription Factor 8; DELTAEF1; NIL2A; TCF-8

## Background

Gene Name: ZEB1

NCBI Gene Entry: [6935](#)

## Storage

Store at liquid nitrogen for 1 year.

## Kit Components

1. Human ZEB1 Knockdown Cell Line (Wb-Validated)
2. Wild-type cell line

## Parental Cell Line

Human cell line supplied by the client

## Validation Methods

RT-qPCR, Western blotting (WB)

## Shipping

Shipped on Dry Ice.

## Instructions For Use

This knockdown cell line should be paired with wild-type cell line for use.

**Note:** This product is for research use only.

## Validation Data

---

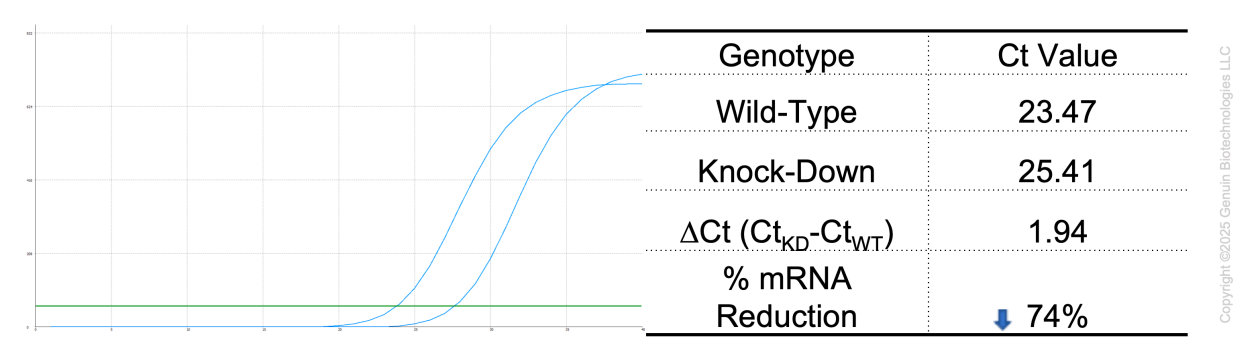
### SUPPORT

SUPPORT@GENUINBIOTECH.COM  
TEL: +1-540-855-7041

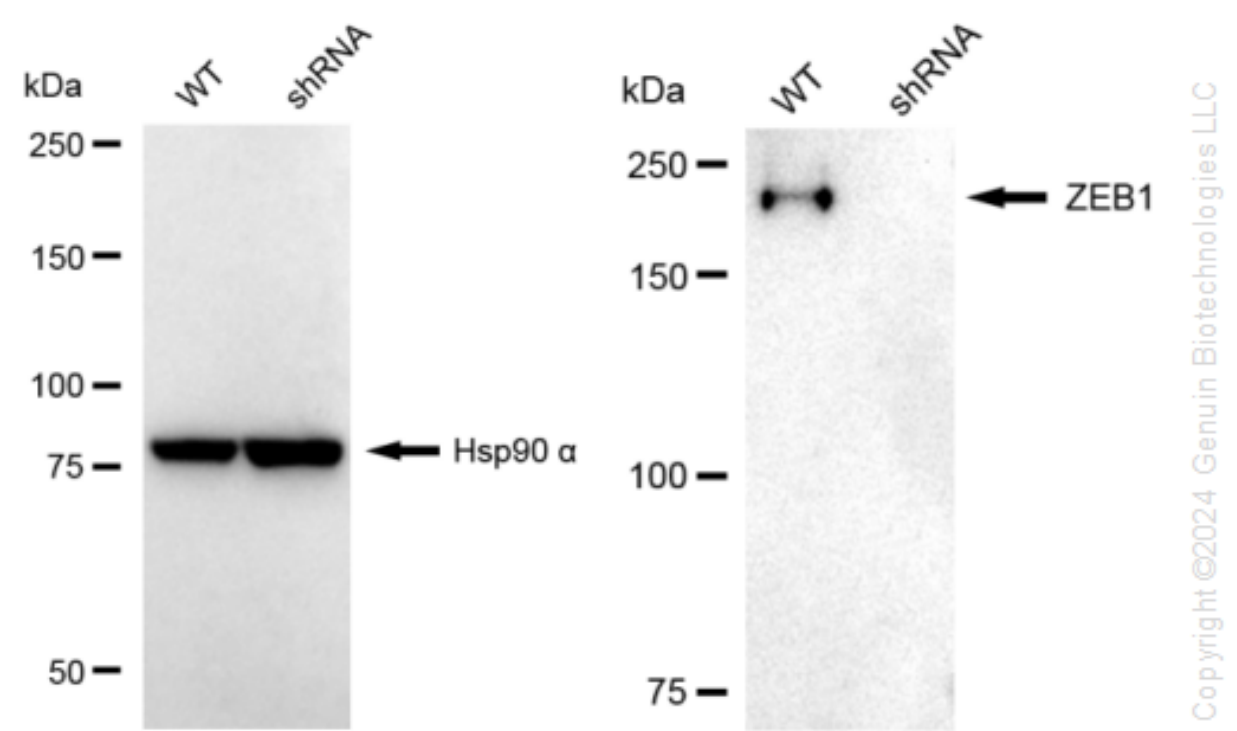
### ORDERS

SALES@GENUINBIOTECH.COM  
FAX: +1-540-855-7041

[WWW.GENUINBIOTECH.COM](http://WWW.GENUINBIOTECH.COM)



RT-qPCR analysis. HeLa cells were infected with ZEB1-specific shRNA lentiviral particles, total RNA was extracted from wild-type and knockdown cells, RT-qPCR was performed using gene-specific primers.  $\Delta\text{Ct} (\text{Ct}_{\text{KD}} - \text{Ct}_{\text{WT}})$  was used to calculate mRNA reduction (%) between wild-type and knockdown cells using the following formula:  $(1 - 1/2^{\Delta\text{Ct}}) \times 100\%$ .



Western blotting analysis. ZEB1 protein expression in wild-type (WT) and shRNA knockdown (KD) HeLa cells was detected using Western blotting. Hsp90 α served as a loading control. The blots were incubated with primary antibodies against ZEB1 and Hsp90 α, respectively, followed by incubating with HRP-conjugated goat anti-rabbit secondary antibody. Images were developed using FeQ™ ECL Substrate Kit.