

# Human SLC25A12 Knockdown Cell Line (WB-Validated)



**Catalog #: C62662**

## Aliases

SLC25A12; Solute Carrier Family 25 Member 12; Aralar; AGC1; Electrogenic Aspartate/Glutamate Antiporter SLC25A12, Mitochondrial; Aralar1; Solute Carrier Family 25 (Mitochondrial Carrier, Aralar), Member 12; Solute Carrier Family 25 (Aspartate/Glutamate Carrier), Member 12; Mitochondrial Aspartate Glutamate Carrier 1; Aspartate/Glutamate Carrier 1; Araceli Hiperlarga; Calcium Binding Mitochondrial Carrier Superfamily Member Aralar1; Calcium-Binding Mitochondrial Carrier Protein Aralar1; ARALAR1; EIEE39; DEE39

## Background

Gene Name: SLC25A12

NCBI Gene Entry: [8604](#)

## Storage

Store at liquid nitrogen for 1 year.

## Kit Components

1. Human SLC25A12 Knockdown Cell Line (Wb-Validated)
2. Wild-type cell line

## Parental Cell Line

Human cell line supplied by the client

## Validation Methods

RT-qPCR, Western blotting (WB)

## Shipping

Shipped on Dry Ice.

## Instructions For Use

This knockdown cell line should be paired with wild-type cell line for use.

**Note:** This product is for research use only.

## Validation Data

---

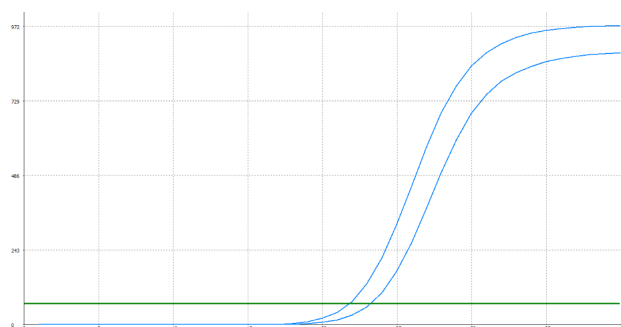
### SUPPORT

SUPPORT@GENUINBIOTECH.COM  
TEL: +1-540-855-7041

### ORDERS

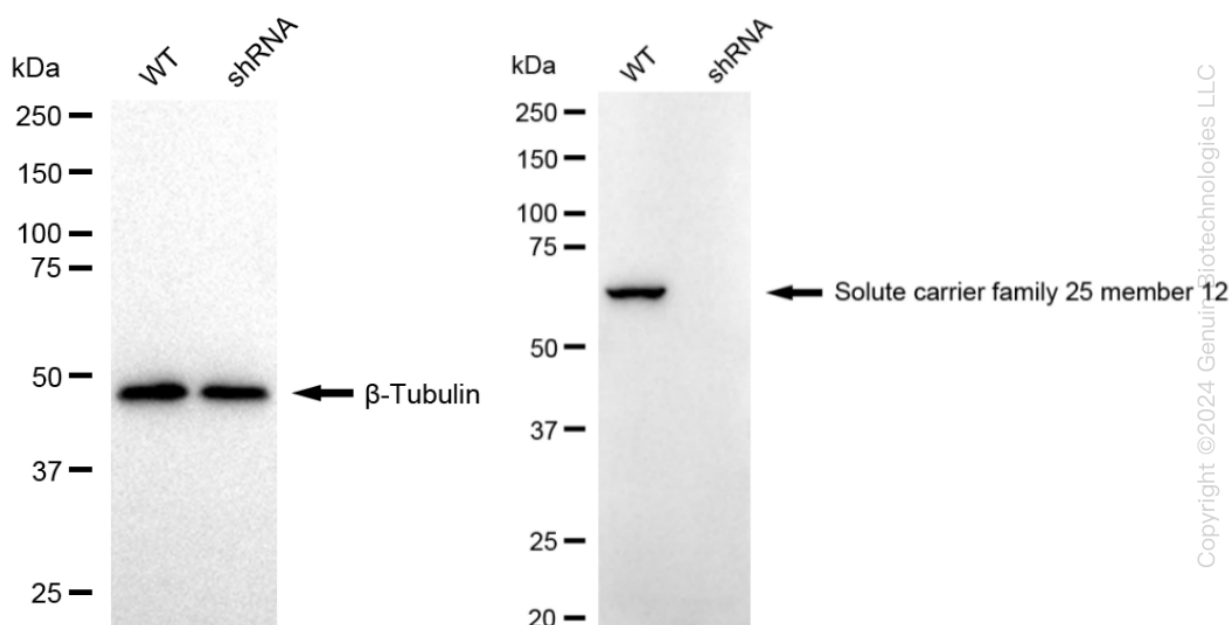
SALES@GENUINBIOTECH.COM  
FAX: +1-540-855-7041

[WWW.GENUINBIOTECH.COM](http://WWW.GENUINBIOTECH.COM)



Genotype	Ct Value
Wild-Type	21.83
Knock-Down	23.12
$\Delta Ct (Ct_{KD}-Ct_{WT})$	1.29
% mRNA Reduction	↓ 59%

RT-qPCR analysis. HeLa cells were infected with SLC25A12-specific shRNA lentiviral particles, total RNA was extracted from wild-type and knockdown cells, RT-qPCR was performed using gene-specific primers.  $\Delta Ct (Ct_{KD}-Ct_{WT})$  was used to calculate mRNA reduction (%) between wild-type and knockdown cells using the following formula:  $(1-1/2^{\Delta Ct}) \times 100\%$ .



Western blotting analysis. SLC25A12 protein expression in wild-type (WT) and shRNA knockdown (KD) HeLa cells was detected using Western blotting.  $\beta$ -Tubulin served as a loading control. The blots were incubated with primary antibodies against SLC25A12 and  $\beta$ -Tubulin, respectively, followed by incubating with HRP-conjugated goat anti-rabbit secondary antibody. Images were developed using FeQ™ ECL Substrate Kit.