

Human SRR Knockdown Cell Line (WB-Validated)



Catalog #: C62663

Aliases

SRR; Serine Racemase; ILV1; ISO1; D-Serine Ammonia-Lyase; L-Serine Ammonia-Lyase; D-Serine Dehydratase; L-Serine Dehydratase; EC 5.1.1.18; EC 4.3.1.18; EC 4.3.1.17

Background

Gene Name: SRR

NCBI Gene Entry: [63826](#)

Storage

Store at liquid nitrogen for 1 year.

Kit Components

1. Human SRR Knockdown Cell Line (Wb-Validated)
2. Wild-type cell line

Parental Cell Line

Human cell line supplied by the client

Validation Methods

RT-qPCR, Western blotting (WB)

Shipping

Shipped on Dry Ice.

Instructions For Use

This knockdown cell line should be paired with wild-type cell line for use.

Note: This product is for research use only.

Validation Data

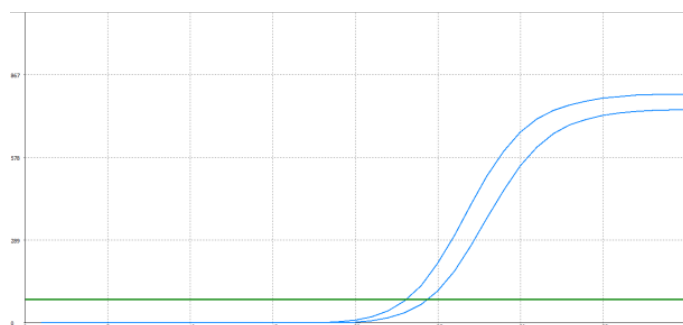
SUPPORT

SUPPORT@GENUINBIOTECH.COM
TEL: +1-540-855-7041

ORDERS

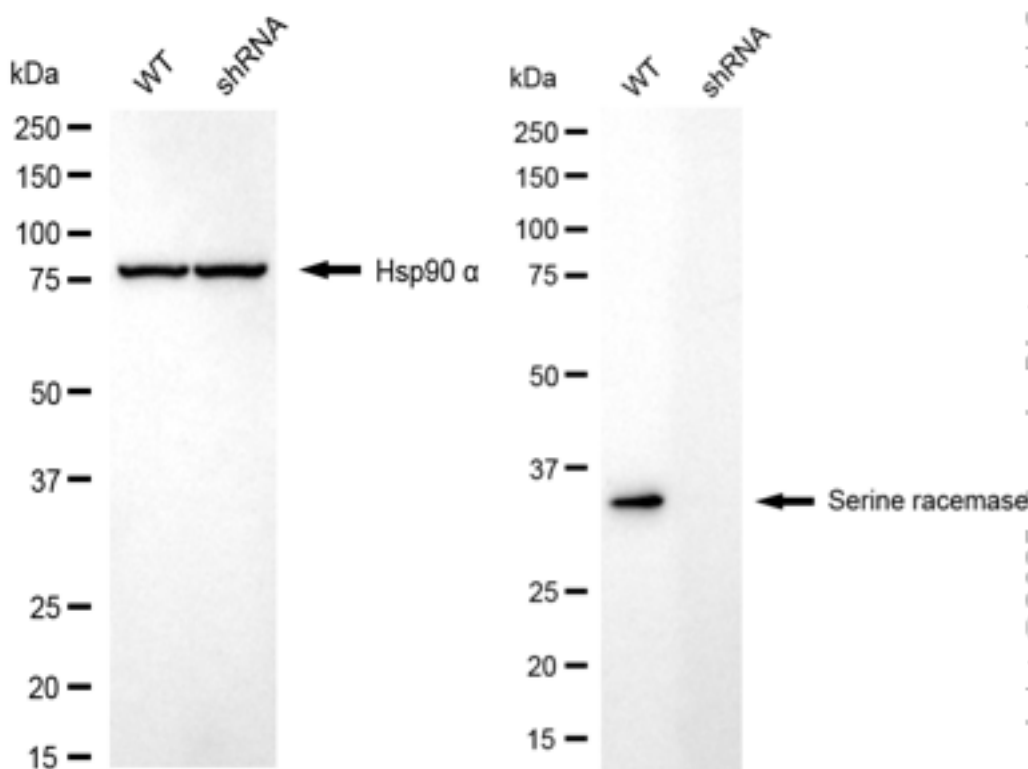
SALES@GENUINBIOTECH.COM
FAX: +1-540-855-7041

WWW.GENUINBIOTECH.COM



Genotype	Ct Value
Wild-Type	22.45
Knock-Down	23.62
ΔCt (CtKD-CtWT)	1.17
% mRNA Reduction	56%

RT-qPCR analysis. HeLa cells were infected with SRR-specific shRNA lentiviral particles, total RNA was extracted from wild-type and knockdown cells, RT-qPCR was performed using gene-specific primers. ΔCt (CtKD-CtWT) was used to calculate mRNA reduction (%) between wild-type and knockdown cells using the following formula: $(1 - 1/2^{\Delta Ct}) \times 100\%$.



Western blotting analysis. SRR protein expression in wild-type (WT) and shRNA knockdown (KD) HeLa cells was detected using Western blotting. Hsp90 α served as a loading control. The blots were incubated with primary antibodies against SRR and Hsp90 α , respectively, followed by incubating with HRP-conjugated goat anti-rabbit secondary antibody. Images were developed

Human SRR Knockdown Cell Line (WB-Validated)

PAGE 3

using FeQ™ ECL Substrate Kit.

SUPPORT

SUPPORT@GENUINBIOTECH.COM
TEL: +1-540-855-7041

ORDERS

SALES@GENUINBIOTECH.COM
FAX:+1-540-855-7041

WWW.GENUINBIOTECH.COM