

# Human TFAP2A Knockdown Cell Line (WB-Validated)



**Catalog #: C62671**

## Aliases

TFAP2A; Transcription Factor AP-2 Alpha; AP-2; AP-2alpha; AP2TF; TFAP2; Transcription Factor AP-2 Alpha (Activating Enhancer Binding Protein 2 Alpha); Activating Enhancer-Binding Protein 2-Alpha; Transcription Factor AP-2-Alpha; AP-2 Transcription Factor; Activator Protein 2; Transcription Factor AP-2 Alpha (Activating Enhancer-Binding Protein 2 Alpha); AP2-Alpha; BOFS

## Background

Gene Name: TFAP2A  
NCBI Gene Entry: [7020](#)

## Storage

Store at liquid nitrogen for 1 year.

## Kit Components

1. Human TFAP2A Knockdown Cell Line (Wb-Validated)
2. Wild-type cell line

## Parental Cell Line

Human cell line supplied by the client

## Validation Methods

RT-qPCR, Western blotting (WB)

## Shipping

Shipped on Dry Ice.

## Instructions For Use

This knockdown cell line should be paired with wild-type cell line for use.

**Note:** This product is for research use only.

## Validation Data

---

### SUPPORT

SUPPORT@GENUINBIOTECH.COM  
TEL: +1-540-855-7041

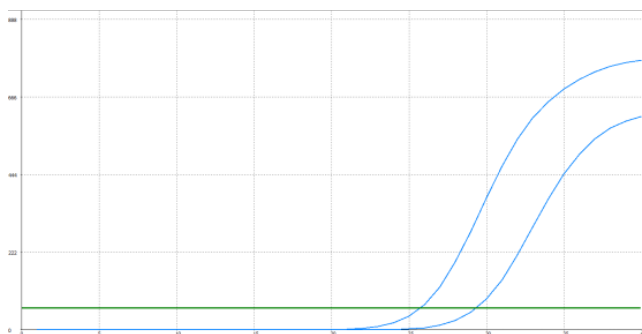
### ORDERS

SALES@GENUINBIOTECH.COM  
FAX: +1-540-855-7041

[WWW.GENUINBIOTECH.COM](http://WWW.GENUINBIOTECH.COM)

## Human TFAP2A Knockdown Cell Line (WB-Validated)

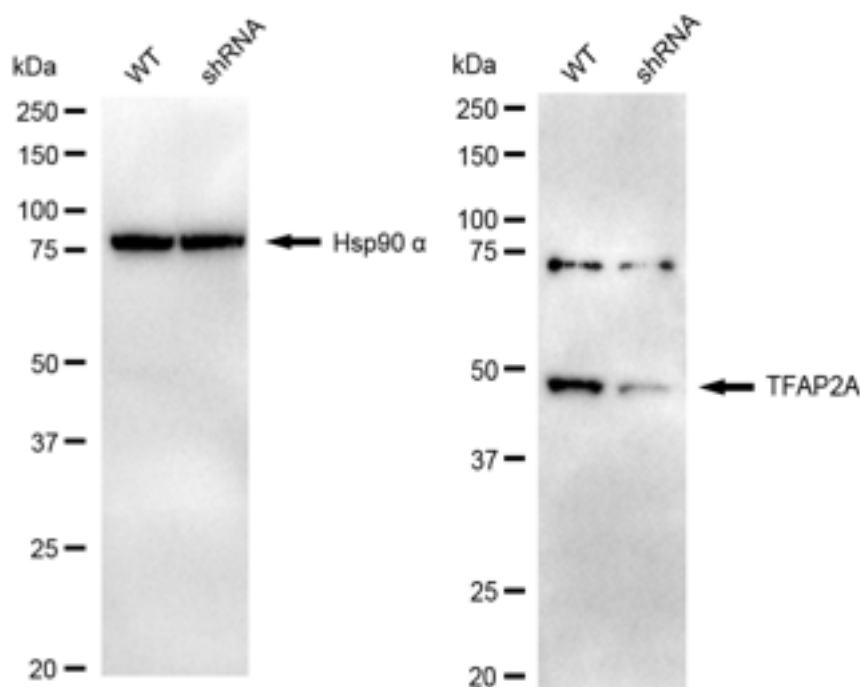
PAGE 2



Genotype	Ct Value
Wild-Type	25.47
Knock-Down	28.70
$\Delta Ct$ (CtKD-CtWT)	3.23
% mRNA Reduction	89%

Copyright ©2025 Genuin Biotechnologies LLC

RT-qPCR analysis. HeLa cells were infected with TFAP2A-specific shRNA lentiviral particles, total RNA was extracted from wild-type and knockdown cells, RT-qPCR was performed using gene-specific primers.  $\Delta Ct$  (CtKD-CtWT) was used to calculate mRNA reduction (%) between wild-type and knockdown cells using the following formula:  $(1 - 1/2^{\Delta Ct}) \times 100\%$ .



Copyright ©2025 Genuin Biotechnologies LLC

Western blotting analysis. TFAP2A protein expression in wild-type (WT) and shRNA knockdown (KD) HeLa cells was detected using Western blotting. Hsp90  $\alpha$  served as a loading control. The blots were incubated with primary antibodies against TFAP2A and Hsp90  $\alpha$ , respectively,

### SUPPORT

SUPPORT@GENUINBIOTECH.COM  
TEL: +1-540-855-7041

### ORDERS

SALES@GENUINBIOTECH.COM  
FAX: +1-540-855-7041

[WWW.GENUINBIOTECH.COM](http://WWW.GENUINBIOTECH.COM)

## **Human TFAP2A Knockdown Cell Line (WB-Validated)**

PAGE 3

followed by incubating with HRP-conjugated goat anti-rabbit secondary antibody. Images were developed using FeQ™ ECL Substrate Kit.

---

### **SUPPORT**

SUPPORT@GENUINBIOTECH.COM  
TEL: +1-540-855-7041

### **ORDERS**

SALES@GENUINBIOTECH.COM  
FAX: +1-540-855-7041

**WWW.GENUINBIOTECH.COM**