

Human TPM1 Knockdown Cell Line (WB-Validated)



Catalog #: C62674

Aliases

TPM1; Tropomyosin 1; C15orf13; Cardiomyopathy, Hypertrophic 3; Tropomyosin Alpha-1 Chain; CMH3; TMSA; Chromosome 15 Open Reading Frame 13; Epididymis Secretory Protein Li 265; Sarcomeric Tropomyosin Kappa; Tropomyosin 1 (Alpha); Alpha-Tropomyosin; Tropomyosin-1; HEL-S-265; HTM-Alpha; CMD1Y; LVNC9

Background

Gene Name: TPM1

NCBI Gene Entry: [7168](#)

Storage

Store at liquid nitrogen for 1 year.

Kit Components

1. Human TPM1 Knockdown Cell Line (Wb-Validated)
2. Wild-type cell line

Parental Cell Line

Human cell line supplied by the client

Validation Methods

RT-qPCR, Western blotting (WB)

Shipping

Shipped on Dry Ice.

Instructions For Use

This knockdown cell line should be paired with wild-type cell line for use.

Note: This product is for research use only.

Validation Data

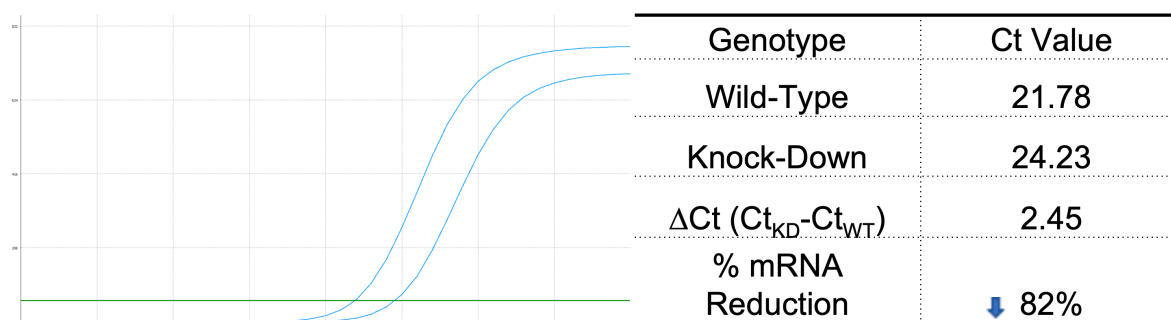
SUPPORT

SUPPORT@GENUINBIOTECH.COM
TEL: +1-540-855-7041

ORDERS

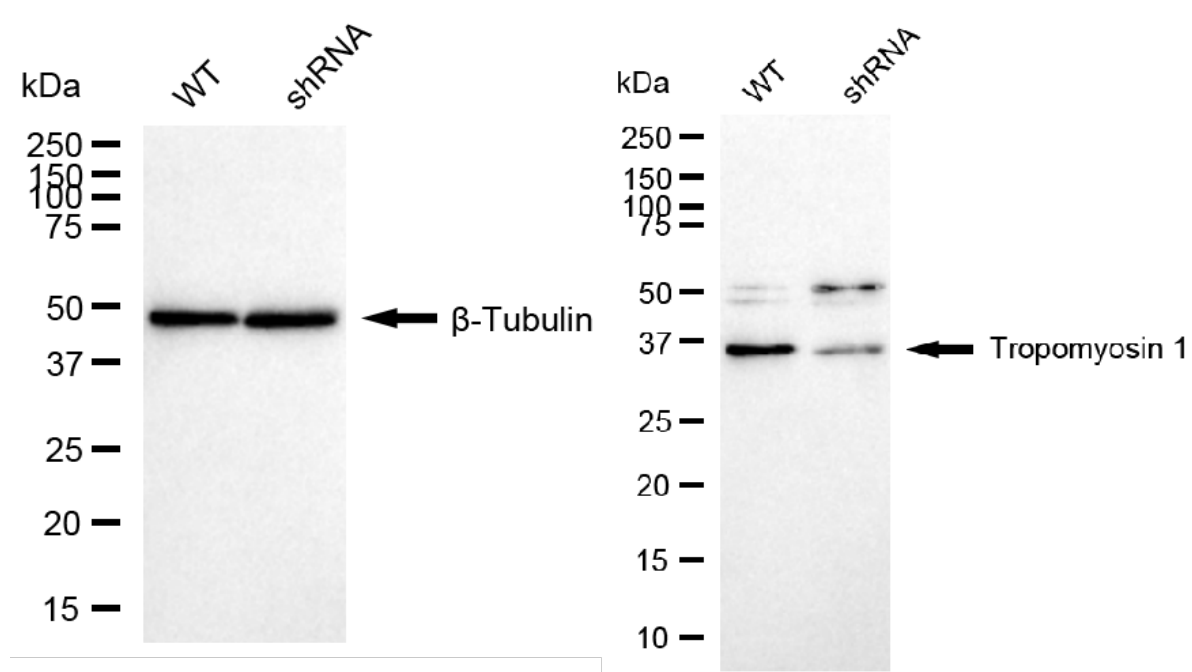
SALES@GENUINBIOTECH.COM
FAX: +1-540-855-7041

WWW.GENUINBIOTECH.COM



Copyright ©2025 Genuin Biotechnologies LLC

RT-qPCR analysis. HeLa cells were infected with TPM1-specific shRNA lentiviral particles, total RNA was extracted from wild-type and knockdown cells, RT-qPCR was performed using gene-specific primers. $\Delta\text{Ct (Ct}_{\text{KD}} - \text{Ct}_{\text{WT}})$ was used to calculate mRNA reduction (%) between wild-type and knockdown cells using the following formula: $(1 - 1/2^{\Delta\text{Ct}}) \times 100\%$.



Copyright ©2024 Genuin Biotechnologies LLC

Western blotting analysis. TPM1 protein expression in wild-type (WT) and shRNA knockdown (KD) HeLa cells was detected using Western blotting. β -Tubulin served as a loading control. The blots were incubated with primary antibodies against TPM1 and β -Tubulin, respectively, followed by incubating with HRP-conjugated goat anti-rabbit secondary antibody. Images were developed using FeQ™ ECL Substrate Kit.