

Human VPS26A Knockdown Cell Line (WB-Validated)



Catalog #: C62728

Aliases

VPS26A; VPS26 Retromer Complex Component A; Hbeta58; PEP8A; VPS26; Vacuolar Protein Sorting-Associated Protein 26A; Vesicle Protein Sorting 26A; Vacuolar Protein Sorting 26 Homolog A (S. Pombe); Vacuolar Protein Sorting 26 (Yeast Homolog); Vacuolar Protein Sorting 26 Homolog A; VPS26, Retromer Complex Component A; VPS26 Retromer Complex Component A; HVPS26; HB58

Background

Gene Name: VPS26A
NCBI Gene Entry: [9559](#)

Storage

Store at liquid nitrogen for 1 year.

Kit Components

1. Human VPS26A Knockdown Cell Line (Wb-Validated)
2. Wild-type cell line

Parental Cell Line

Human cell line supplied by the client

Validation Methods

RT-qPCR, Western blotting (WB)

Shipping

Shipped on Dry Ice.

Instructions For Use

This knockdown cell line should be paired with wild-type cell line for use.

Note: This product is for research use only.

Validation Data

SUPPORT

SUPPORT@GENUINBIOTECH.COM
TEL: +1-540-855-7041

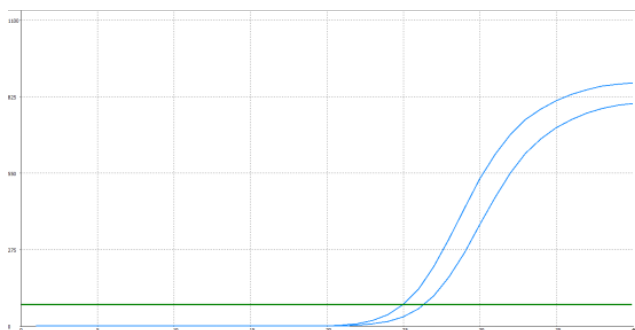
ORDERS

SALES@GENUINBIOTECH.COM
FAX: +1-540-855-7041

WWW.GENUINBIOTECH.COM

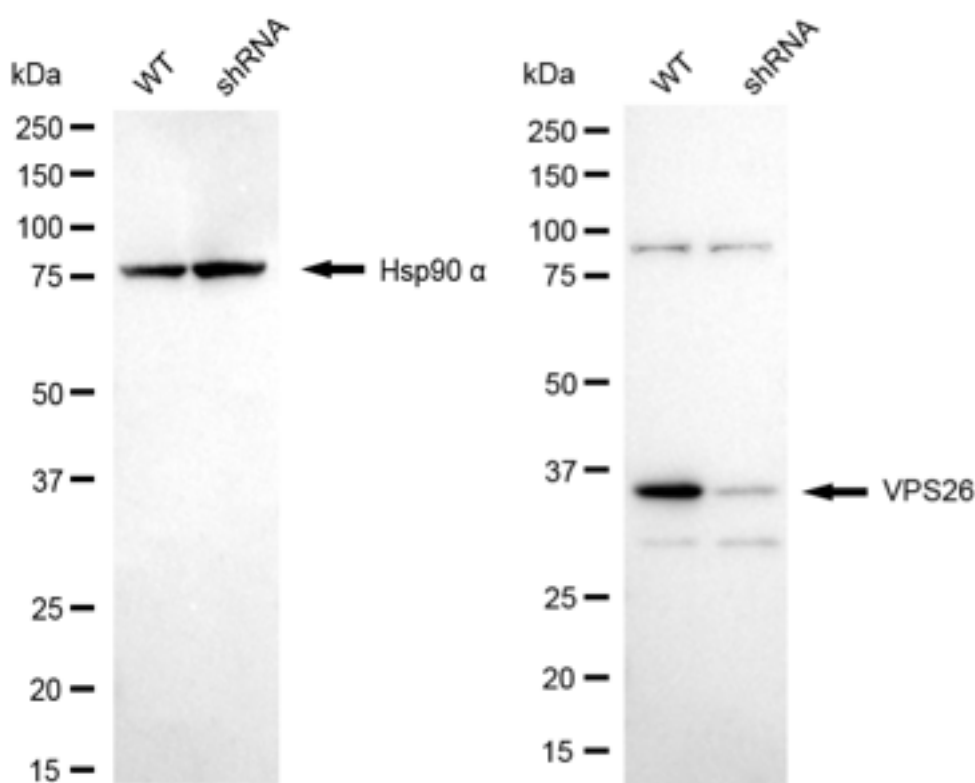
Human VPS26A Knockdown Cell Line (WB-Validated)

PAGE 2



Genotype	Ct Value
Wild-Type	24.57
Knock-Down	25.80
ΔCt (CtKD-CtWT)	1.23
% mRNA Reduction	57%

RT-qPCR analysis. HeLa cells were infected with VPS26A-specific shRNA lentiviral particles, total RNA was extracted from wild-type and knockdown cells, RT-qPCR was performed using gene-specific primers. ΔCt (CtKD-CtWT) was used to calculate mRNA reduction (%) between wild-type and knockdown cells using the following formula: $(1 - 1/2^{\Delta Ct}) \times 100\%$.



Western blotting analysis. VPS26A protein expression in wild-type (WT) and shRNA knockdown (KD) HeLa cells was detected using Western blotting. Hsp90 α served as a loading control. The blots were incubated with primary antibodies against VPS26A and Hsp90 α , respectively, followed by incubating with HRP-conjugated goat anti-rabbit secondary antibody. Images were developed using FeQ™ ECL Substrate Kit.

SUPPORT

SUPPORT@GENUINBIOTECH.COM
TEL: +1-540-855-7041

ORDERS

SALES@GENUINBIOTECH.COM
FAX: +1-540-855-7041

WWW.GENUINBIOTECH.COM

