

Human TARBP2 Knockdown Cell Line (WB-Validated)



Catalog #: C62782

Aliases

TARBP2; TARBP2 Subunit Of RISC Loading Complex; Trbp; TARBP2, RISC Loading Complex RNA Binding Subunit; RISC-Loading Complex Subunit TARBP2; TAR (HIV-1) RNA Binding Protein 2; Trans-Activation Responsive RNA-Binding Protein; Trans-Activation-Responsive RNA-Binding Protein; TAR (HIV) RNA-Binding Protein TRBP1; TAR (HIV) RNA-Binding Protein 2; TAR RNA Binding Protein 2; TAR RNA-Binding Protein 2; TRBP1; TRBP2; LOQS; TRBP

Background

Gene Name: TARBP2

NCBI Gene Entry: [6895](#)

Storage

Store at liquid nitrogen for 1 year.

Kit Components

1. Human TARBP2 Knockdown Cell Line (Wb-Validated)
2. Wild-type cell line

Parental Cell Line

Human cell line supplied by the client

Validation Methods

RT-qPCR, Western blotting (WB)

Shipping

Shipped on Dry Ice.

Instructions For Use

This knockdown cell line should be paired with wild-type cell line for use.

Note: This product is for research use only.

Validation Data

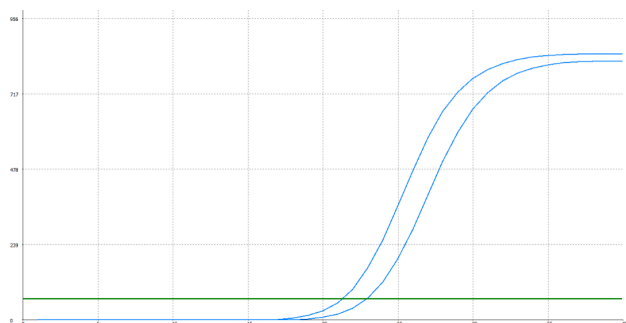
SUPPORT

SUPPORT@GENUINBIOTECH.COM
TEL: +1-540-855-7041

ORDERS

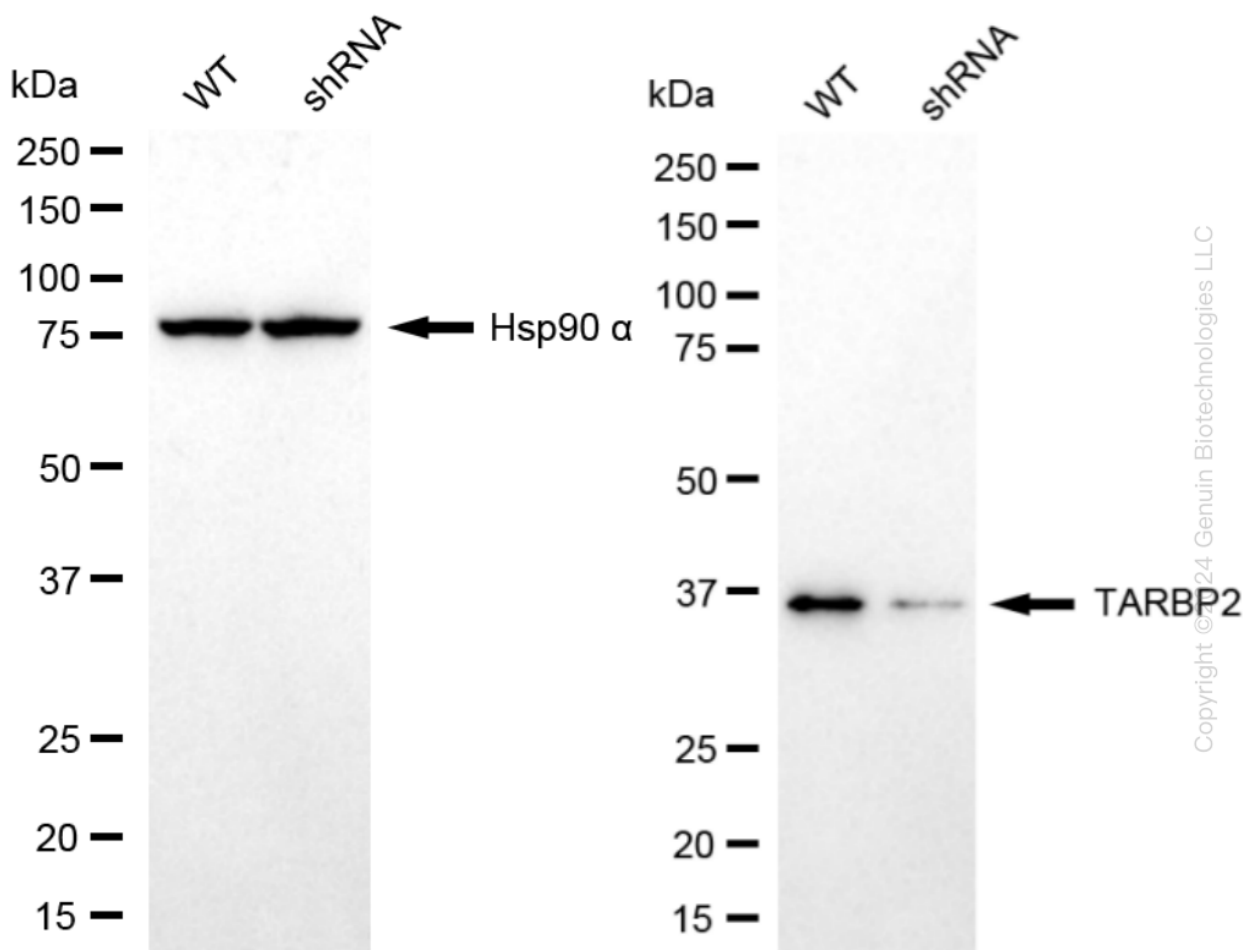
SALES@GENUINBIOTECH.COM
FAX: +1-540-855-7041

WWW.GENUINBIOTECH.COM



Genotype	Ct Value
Wild-Type	21.12
Knock-Down	22.66
ΔCt ($Ct_{KD} - Ct_{WT}$)	1.54
% mRNA Reduction	↓ 66%

RT-qPCR analysis. HeLa cells were infected with TARBP2-specific shRNA lentiviral particles, total RNA was extracted from wild-type and knockdown cells, RT-qPCR was performed using gene-specific primers. ΔCt ($Ct_{KD} - Ct_{WT}$) was used to calculate mRNA reduction (%) between wild-type and knockdown cells using the following formula: $(1 - 1/2^{\Delta Ct}) \times 100\%$.



Western blotting analysis. TARBP2 protein expression in wild-type (WT) and shRNA knockdown (KD) HeLa cells was detected using Western blotting. Hsp90 α served as a loading control. The blots were incubated with primary antibodies against TARBP2 and Hsp90 α , respectively, followed by incubating with HRP-conjugated goat anti-rabbit secondary antibody. Images were developed using FeQ™ ECL Substrate Kit.

