

# Human SNAP25 Knockdown Cell Line (WB-Validated)



**Catalog #: C62795**

## Aliases

SNAP25; Synaptosome Associated Protein 25; SNAP-25; DJ1068F16.2; BA416N4.2; RIC-4; RIC4; SEC9; SNAP; Resistance To Inhibitors Of Cholinesterase 4 Homolog; Synaptosomal-Associated Protein, 25kDa; Synaptosomal-Associated Protein 25; SUP; Synaptosomal-Associated 25 KDa Protein; Synaptosome Associated Protein 25kDa; Super Protein; CMS18

## Background

Gene Name: SNAP25

NCBI Gene Entry: [6616](#)

## Storage

Store at liquid nitrogen for 1 year.

## Kit Components

1. Human SNAP25 Knockdown Cell Line (Wb-Validated)
2. Wild-type cell line

## Parental Cell Line

Human cell line supplied by the client

## Validation Methods

RT-qPCR, Western blotting (WB)

## Shipping

Shipped on Dry Ice.

## Instructions For Use

This knockdown cell line should be paired with wild-type cell line for use.

**Note:** This product is for research use only.

## Validation Data

---

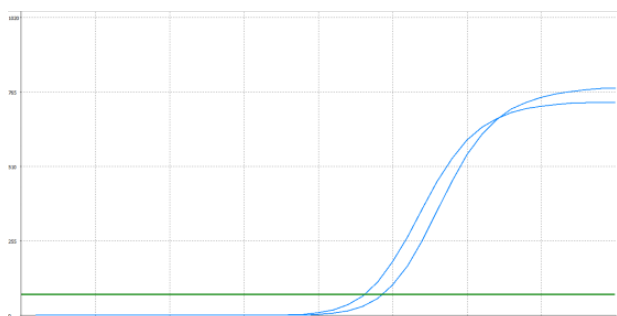
### SUPPORT

SUPPORT@GENUINBIOTECH.COM  
TEL: +1-540-855-7041

### ORDERS

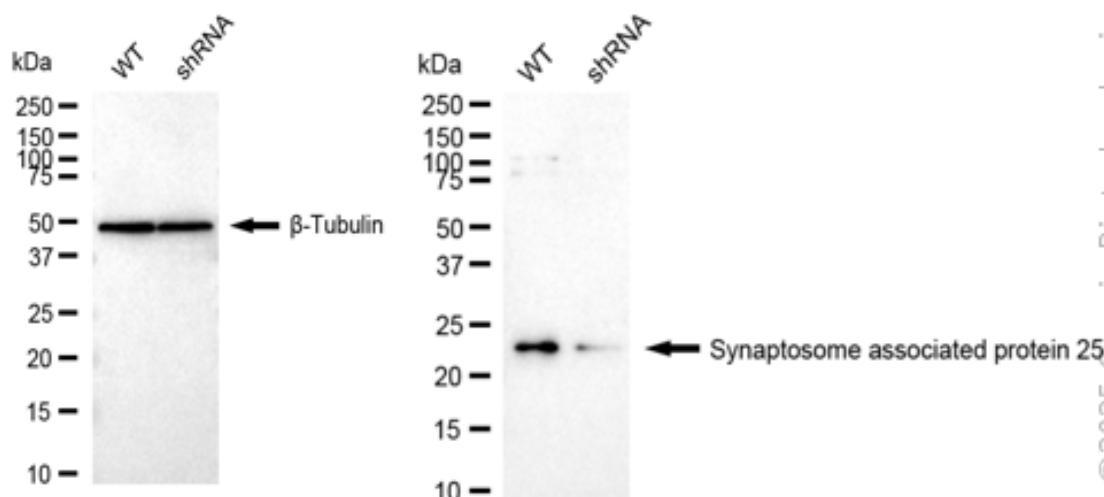
SALES@GENUINBIOTECH.COM  
FAX: +1-540-855-7041

[WWW.GENUINBIOTECH.COM](http://WWW.GENUINBIOTECH.COM)



Genotype	Ct Value
Wild-Type	22.51
Knock-Down	23.88
$\Delta$ Ct (CtKD-CtWT)	1.37
% mRNA Reduction	61%

RT-qPCR analysis. HeLa cells were infected with SMURF2-specific shRNA lentiviral particles, total RNA was extracted from wild-type and knockdown cells, RT-qPCR was performed using gene-specific primers.  $\Delta$ Ct (CtKD-CtWT) was used to calculate mRNA reduction (%) between wild-type and knockdown cells using the following formula:  $(1 - 1/2^{\Delta\text{Ct}}) \times 100\%$ .



Western blotting analysis. SMURF2 protein expression in wild-type (WT) and shRNA knockdown (KD) HeLa cells was detected using Western blotting.  $\beta$ -Tubulin served as a loading control. The blots were incubated with primary antibodies against SMURF2 and  $\beta$ -Tubulin, respectively, followed by incubating with HRP-conjugated goat anti-mouse secondary antibody. Images were developed using FeQ™ ECL Substrate Kit.