

Human THOC1 Knockdown Cell Line (WB-Validated)



Catalog #: C62809

Aliases

THOC1; THO Complex Subunit 1; HPR1; P84; Nuclear Matrix Protein P84; THO Complex 1; HTREX84; P84N5; Tho1; DFNA86

Background

Gene Name: THOC1
NCBI Gene Entry: [9984](#)

Storage

Store at liquid nitrogen for 1 year.

Kit Components

1. Human THOC1 Knockdown Cell Line (Wb-Validated)
2. Wild-type cell line

Parental Cell Line

Human cell line supplied by the client

Validation Methods

RT-qPCR, Western blotting (WB)

Shipping

Shipped on Dry Ice.

Instructions For Use

This knockdown cell line should be paired with wild-type cell line for use.

Note: This product is for research use only.

Validation Data

SUPPORT

SUPPORT@GENUINBIOTECH.COM
TEL: +1-540-855-7041

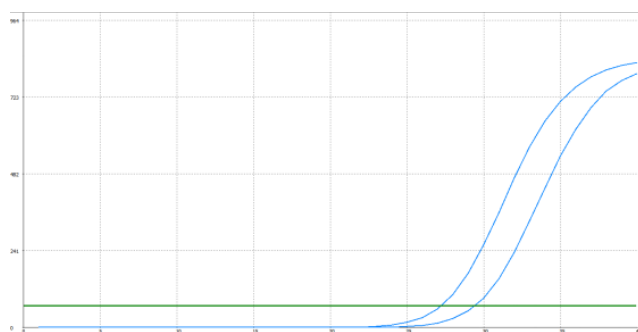
ORDERS

SALES@GENUINBIOTECH.COM
FAX: +1-540-855-7041

WWW.GENUINBIOTECH.COM

Human THOC1 Knockdown Cell Line (WB-Validated)

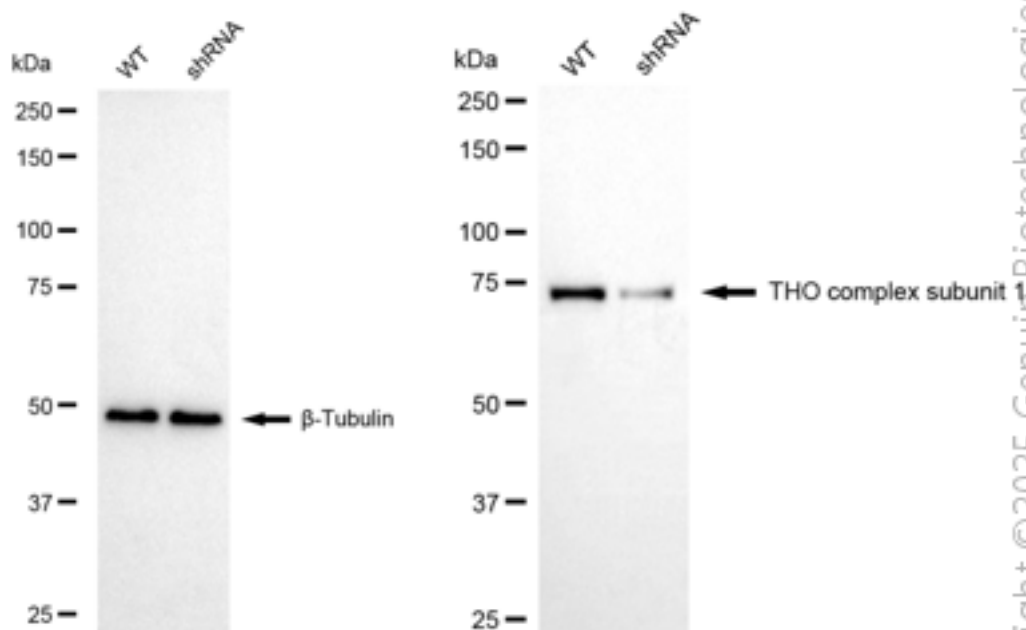
PAGE 2



| Genotype | Ct Value |
|-------------------------|----------|
| Wild-Type | 27.01 |
| Knock-Down | 29.12 |
| Δ Ct (CtKD-CtWT) | 2.11 |
| % mRNA Reduction | 77% |

Copyright © 2025 Genuin Biotechnologies LLC

RT-qPCR analysis. HeLa cells were infected with THOC1-specific shRNA lentiviral particles, total RNA was extracted from wild-type and knockdown cells, RT-qPCR was performed using gene-specific primers. Δ Ct (CtKD-CtWT) was used to calculate mRNA reduction (%) between wild-type and knockdown cells using the following formula: $(1 - 1/2^{\Delta\text{Ct}}) \times 100\%$.



Copyright © 2025 Genuin Biotechnologies LLC

Western blotting analysis. THOC1 protein expression in wild-type (WT) and shRNA knockdown (KD) HeLa cells was detected using Western blotting. β -Tubulin served as a loading control. The blots were incubated with primary antibodies against THOC1 and β -Tubulin, respectively, followed by incubating with HRP-conjugated goat anti-rabbit secondary antibody. Images were developed using FeQ™ ECL Substrate Kit.

SUPPORT

SUPPORT@GENUINBIOTECH.COM
TEL: +1-540-855-7041

ORDERS

SALES@GENUINBIOTECH.COM
FAX: +1-540-855-7041

WWW.GENUINBIOTECH.COM

