

Human LAMP1 Knockdown Cell Line (WB-Validated)



Catalog #: C62825

Aliases

LAMP1; CD107a; Lysosome-Associated Membrane Glycoprotein 1; Lysosome-Associated Membrane Protein 1; CD107 Antigen-Like Family Member A; LAMP-1; Lysosomal-Associated Membrane Protein 1; CD107a Antigen; LGP120; LAMPA

Background

Gene Name: LAMP1

NCBI Gene Entry: [3916](#)

Storage

Store at liquid nitrogen for 1 year.

Kit Components

1. Human LAMP1 Knockdown Cell Line (Wb-Validated)
2. Wild-type cell line

Parental Cell Line

Human cell line supplied by the client

Validation Methods

RT-qPCR, Western blotting (WB)

Shipping

Shipped on Dry Ice.

Instructions For Use

This knockdown cell line should be paired with wild-type cell line for use.

Note: This product is for research use only.

Validation Data

SUPPORT

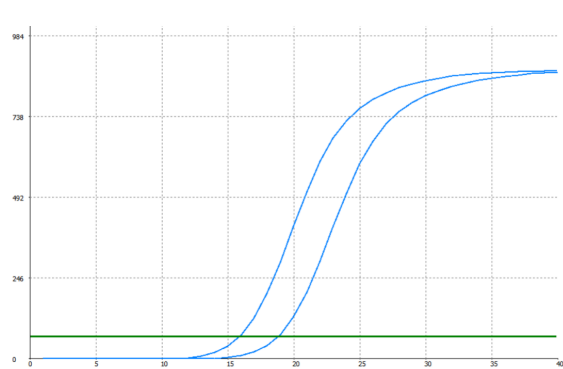
SUPPORT@GENUINBIOTECH.COM
TEL: +1-540-855-7041

ORDERS

SALES@GENUINBIOTECH.COM
FAX: +1-540-855-7041

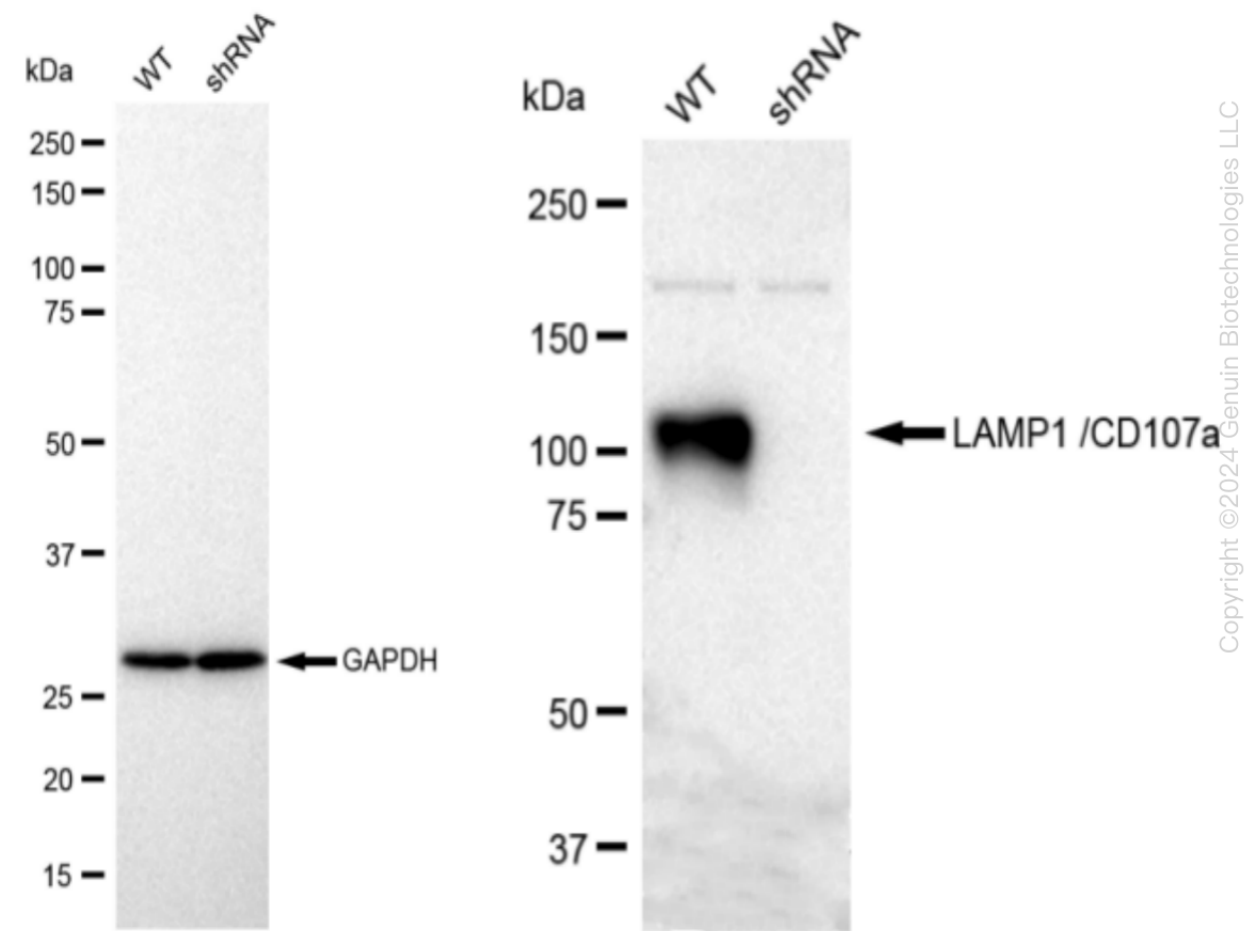
WWW.GENUINBIOTECH.COM

Human LAMP1 Knockdown Cell Line (WB-Validated)



Genotype	Ct Value
Wild-Type	15.72
Knock-Down	18.64
$\Delta Ct (Ct_{KD}-Ct_{WT})$	2.92
% mRNA Reduction	↓ 87%

RT-qPCR analysis. HT-1080 cells were infected with LAMP1-specific shRNA lentiviral particles, total RNA was extracted from wild-type and knockdown cells, RT-qPCR was performed using gene-specific primers. $\Delta Ct (Ct_{KD}-Ct_{WT})$ was used to calculate mRNA reduction (%) between wild-type and knockdown cells using the following formula: $(1-1/2^{\Delta Ct}) \times 100\%$.



Western blotting analysis. LAMP1 protein expression in wild-type (WT) and shRNA knockdown

SUPPORT

SUPPORT@GENUINBIOTECH.COM
TEL: +1-540-855-7041

ORDERS

SALES@GENUINBIOTECH.COM
FAX: +1-540-855-7041

WWW.GENUINBIOTECH.COM

Human LAMP1 Knockdown Cell Line (WB-Validated)

PAGE 3

(KD) HT-1080 cells was detected using Western blotting. GAPDH served as a loading control. The blots were incubated with primary antibodies (Cat#64151, 1:5,000) against LAMP1 and GAPDH, respectively, followed by incubating with HRP-conjugated goat anti-rabbit secondary antibody (Cat#201, 1:20,000). Images were developed using FeQ™ ECL Substrate Kit (Cat#226).

SUPPORT

SUPPORT@GENUINBIOTECH.COM
TEL: +1-540-855-7041

ORDERS

SALES@GENUINBIOTECH.COM
FAX: +1-540-855-7041

WWW.GENUINBIOTECH.COM