

Human NR3C1 Knockdown Cell Line (WB-Validated)



Catalog #: C62834

Aliases

NR3C1; Nuclear Receptor Subfamily 3 Group C Member 1; GR; Glucocorticoid Receptor; GRL; Nuclear Receptor Subfamily 3, Group C, Member 1 (Glucocorticoid Receptor); Nuclear Receptor Subfamily 3 Group C Member 1 Variant HGR-B(54); Nuclear Receptor Subfamily 3 Group C Member 1 Variant HGR-B(77); Nuclear Receptor Subfamily 3 Group C Member 1 Variant HGR-B(93); Nuclear Receptor Subfamily 3, Group C, Member 1; GCRST; GCCR; GCR

Background

Gene Name: NR3C1

NCBI Gene Entry: [2908](#)

Storage

Store at liquid nitrogen for 1 year.

Kit Components

1. Human NR3C1 Knockdown Cell Line (Wb-Validated)
2. Wild-type cell line

Parental Cell Line

Human cell line supplied by the client

Validation Methods

RT-qPCR, Western blotting (WB)

Shipping

Shipped on Dry Ice.

Instructions For Use

This knockdown cell line should be paired with wild-type cell line for use.

Note: This product is for research use only.

Validation Data

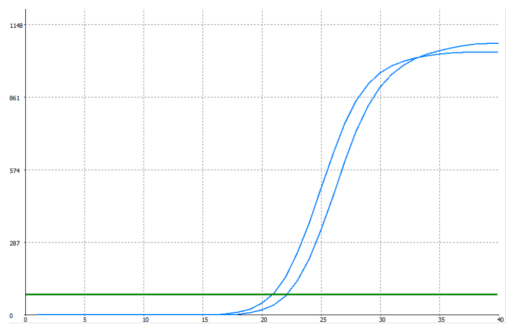
SUPPORT

SUPPORT@GENUINBIOTECH.COM
TEL: +1-540-855-7041

ORDERS

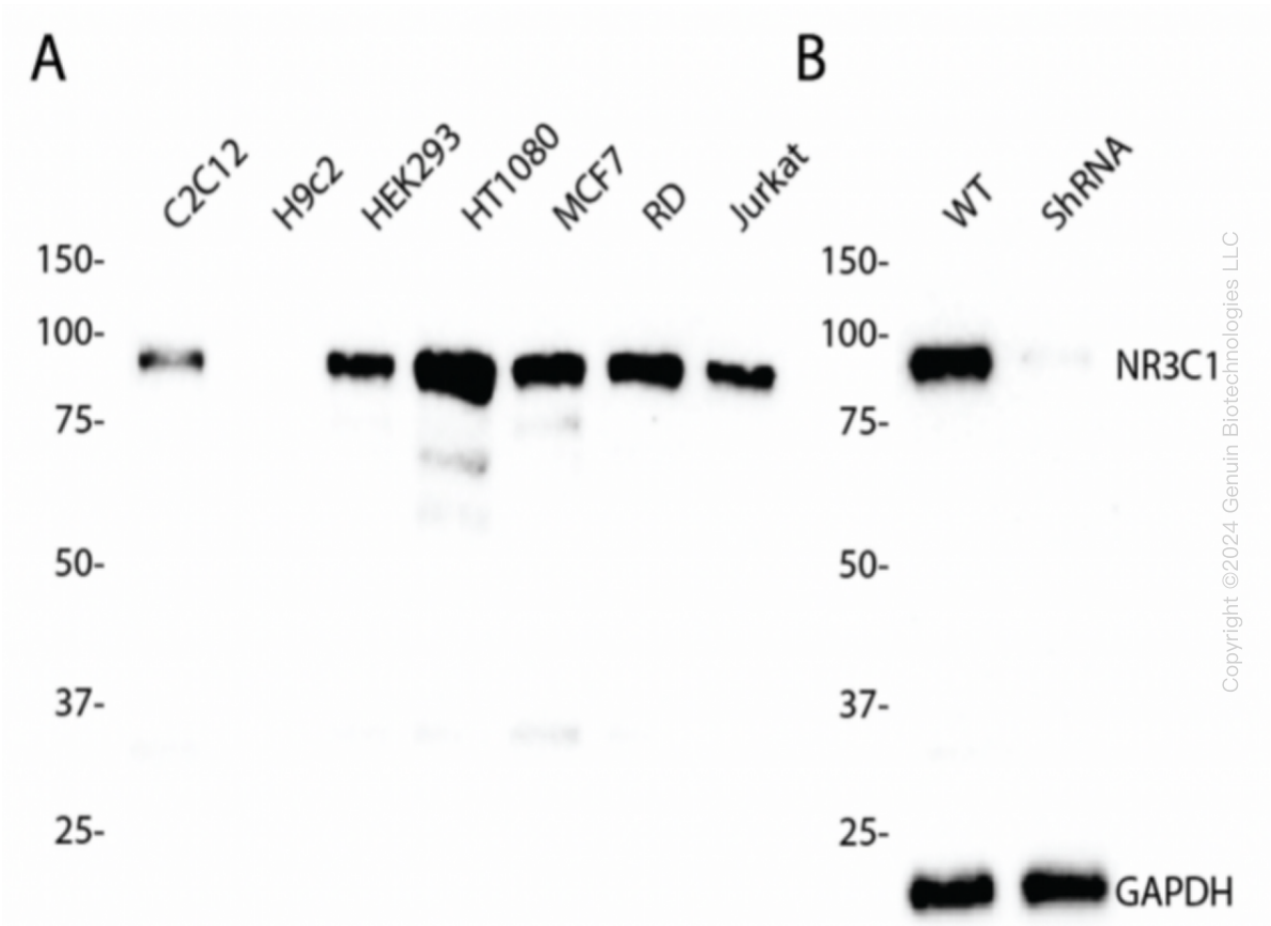
SALES@GENUINBIOTECH.COM
FAX: +1-540-855-7041

WWW.GENUINBIOTECH.COM



Genotype	Ct Value
Wild-Type	20.70
Knock-Down	22.02
Δ Ct (Ct _{KD} -Ct _{WT})	1.32
% mRNA Reduction	↓ 60%

RT-qPCR analysis. HeLa cells were infected with NR3C1-specific shRNA lentiviral particles, total RNA was extracted from wild-type and knockdown cells, RT-qPCR was performed using gene-specific primers. Δ Ct (Ct_{KD}-Ct_{WT}) was used to calculate mRNA reduction (%) between wild-type and knockdown cells using the following formula: $(1-1/2^{\Delta$ Ct) x 100%.



Western blotting analysis. NR3C1 protein expression in wild-type (WT) and shRNA knockdown (KD) HeLa cells was detected using Western blotting. GAPDH served as a loading control. The blots were incubated with primary antibodies against NR3C1 and GAPDH, respectively, followed by incubating with HRP-conjugated goat anti-rabbit secondary antibody. Images were developed using FeQ™ ECL Substrate Kit.

