

# Human EXOG Knockdown Cell Line (WB-Validated)



**Catalog #: C62853**

## Aliases

EXOG; Exo/Endonuclease G; ENGL; Endonuclease G-Like 1; ENDOGL1; ENDOGL2; ENGL-A; ENGL-B; Endo/Exonuclease (5'-3'), Endonuclease G-Like; Nuclease EXOG, Mitochondrial; Endonuclease G-Like 2; Endo G-Like 1; EC 3.1.30.-; EC 3.1.30; ENGLA; ENGLB

## Background

Gene Name: EXOG

NCBI Gene Entry: [9941](#)

## Storage

Store at liquid nitrogen for 1 year.

## Kit Components

1. Human EXOG Knockdown Cell Line (Wb-Validated)
2. Wild-type cell line

## Parental Cell Line

Human cell line supplied by the client

## Validation Methods

RT-qPCR, Western blotting (WB)

## Shipping

Shipped on Dry Ice.

## Instructions For Use

This knockdown cell line should be paired with wild-type cell line for use.

**Note:** This product is for research use only.

## Validation Data

---

### SUPPORT

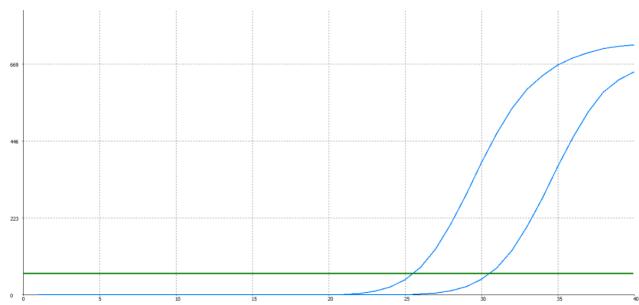
SUPPORT@GENUINBIOTECH.COM  
TEL: +1-540-855-7041

### ORDERS

SALES@GENUINBIOTECH.COM  
FAX: +1-540-855-7041

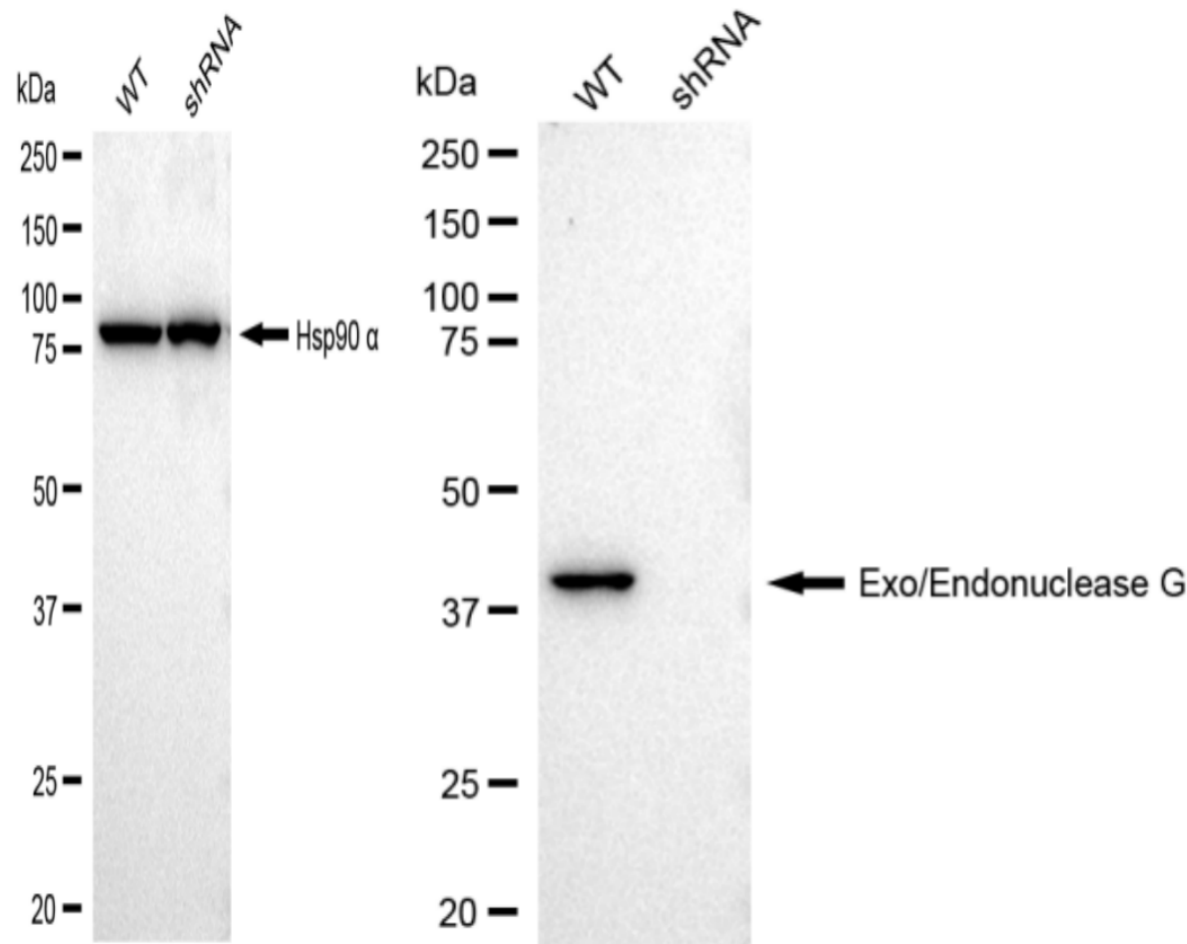
[WWW.GENUINBIOTECH.COM](http://WWW.GENUINBIOTECH.COM)

Human EXOG Knockdown Cell Line (WB-Validated)



Genotype	Ct Value
Wild-Type	25.21
Knock-Down	30.02
$\Delta$ Ct (Ct <sub>KD</sub> -Ct <sub>WT</sub> )	4.81
% mRNA Reduction	↓ 96%

RT-qPCR analysis. HeLa cells were infected with EXOG-specific shRNA lentiviral particles, total RNA was extracted from wild-type and knockdown cells, RT-qPCR was performed using gene-specific primers.  $\Delta$ Ct (Ct<sub>KD</sub>-Ct<sub>WT</sub>) was used to calculate mRNA reduction (%) between wild-type and knockdown cells using the following formula:  $(1-1/2^{\Delta$ Ct) x 100%.



Western blotting analysis. EXOG protein expression in wild-type (WT) and shRNA knockdown

SUPPORT

SUPPORT@GENUINBIOTECH.COM  
TEL: +1-540-855-7041

ORDERS

SALES@GENUINBIOTECH.COM  
FAX: +1-540-855-7041

WWW.GENUINBIOTECH.COM

## **Human EXOG Knockdown Cell Line (WB-Validated)**

PAGE 3

(KD) HeLa cells was detected using Western blotting. Hsp90  $\alpha$  served as a loading control. The blots were incubated with primary antibodies (Cat#62853, 1:5,000) against EXOG and Hsp90  $\alpha$ , respectively, followed by incubating with HRP-conjugated goat anti-rabbit secondary antibody (Cat#201, 1:20,000). Images were developed using FeQ™ ECL Substrate Kit (Cat#226).

---

### **SUPPORT**

SUPPORT@GENUINBIOTECH.COM  
TEL: +1-540-855-7041

### **ORDERS**

SALES@GENUINBIOTECH.COM  
FAX: +1-540-855-7041

**WWW.GENUINBIOTECH.COM**