

Human AK1 Knockdown Cell Line (WB-Validated)



Catalog #: C62872

Aliases

AK1; Adenylate Kinase 1; Adenylate Monophosphate Kinase; Adenylate Kinase Isoenzyme 1; ATP-AMP Transphosphorylase 1; ATP:AMP Phosphotransferase; EC 2.7.4.3; Myokinase; Testis Secretory Sperm Binding Protein Li 58j; Epididymis Secretory Sperm Binding Protein; EC 2.7.4.10; EC 2.7.4.6; HTL-S-58j; EC 2.7.4; AK 1

Background

Gene Name: AK1

NCBI Gene Entry: [203](#)

Storage

Store at liquid nitrogen for 1 year.

Kit Components

1. Human AK1 Knockdown Cell Line (Wb-Validated)
2. Wild-type cell line

Parental Cell Line

Human cell line supplied by the client

Validation Methods

RT-qPCR, Western blotting (WB)

Shipping

Shipped on Dry Ice.

Instructions For Use

This knockdown cell line should be paired with wild-type cell line for use.

Note: This product is for research use only.

Validation Data

SUPPORT

SUPPORT@GENUINBIOTECH.COM
TEL: +1-540-855-7041

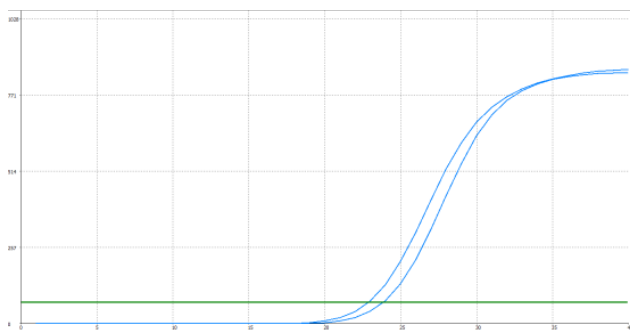
ORDERS

SALES@GENUINBIOTECH.COM
FAX: +1-540-855-7041

WWW.GENUINBIOTECH.COM

Human AK1 Knockdown Cell Line (WB-Validated)

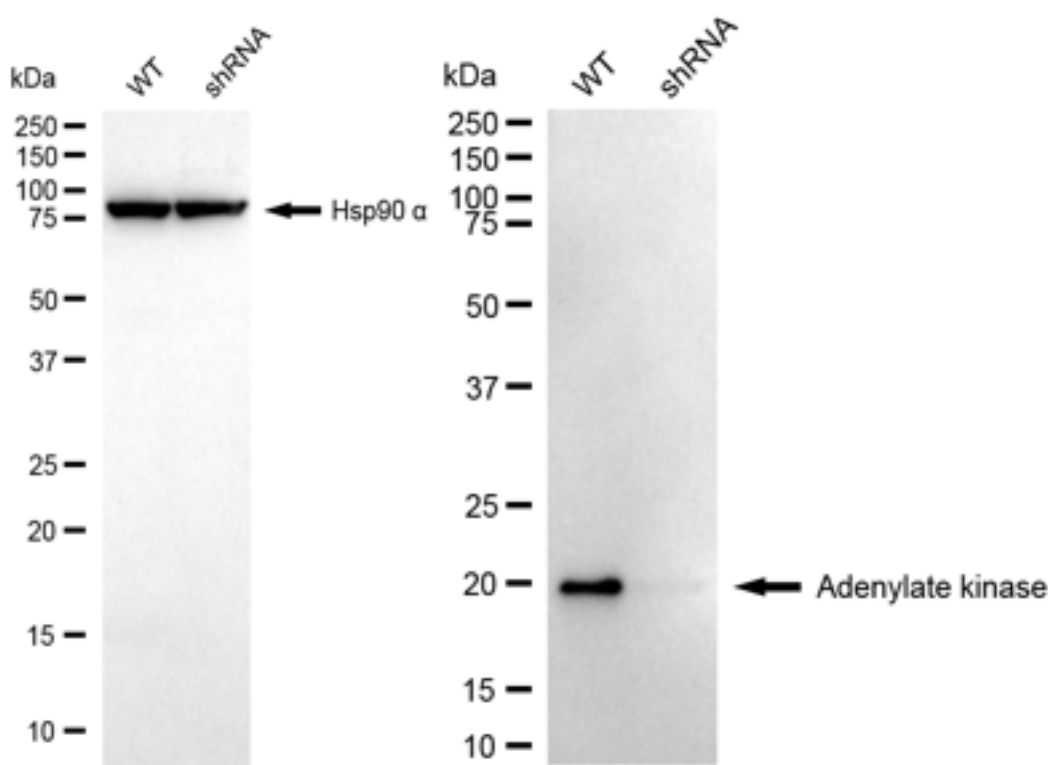
PAGE 2



Genotype	Ct Value
Wild-Type	22.57
Knock-Down	23.51
ΔCt (CtKD-CtWT)	0.94
% mRNA Reduction	48%

Copyright © 2025 Genuin Biotechnologies LLC

RT-qPCR analysis. HeLa cells were infected with AK1-specific shRNA lentiviral particles, total RNA was extracted from wild-type and knockdown cells, RT-qPCR was performed using gene-specific primers. ΔCt (CtKD-CtWT) was used to calculate mRNA reduction (%) between wild-type and knockdown cells using the following formula: $(1 - 1/2^{\Delta Ct}) \times 100\%$.



Copyright © 2025 Genuin Biotechnologies LLC

Western blotting analysis. AK1 protein expression in wild-type (WT) and shRNA knockdown (KD) HeLa cells was detected using Western blotting. Hsp90 α served as a loading control. The blots were incubated with primary antibodies against AK1 and Hsp90 α , respectively, followed by

SUPPORT

SUPPORT@GENUINBIOTECH.COM
TEL: +1-540-855-7041

ORDERS

SALES@GENUINBIOTECH.COM
FAX: +1-540-855-7041

WWW.GENUINBIOTECH.COM

Human AK1 Knockdown Cell Line (WB-Validated)

PAGE 3

incubating with HRP-conjugated goat anti-rabbit secondary antibody. Images were developed using FeQ™ ECL Substrate Kit.

SUPPORT

SUPPORT@GENUINBIOTECH.COM
TEL: +1-540-855-7041

ORDERS

SALES@GENUINBIOTECH.COM
FAX: +1-540-855-7041

WWW.GENUINBIOTECH.COM