

Human MAPK1 Knockdown Cell Line (WB-Validated)



Catalog #: C62904

Aliases

MAPK1; Mitogen-Activated Protein Kinase 1; ERK2; Extracellular Signal Regulated Kinase 2; P41mapk; MAPK2; PRKM1; PRKM2; ERK; Mitogen-Activated Protein Kinase 2; MAP Kinase 1; MAP Kinase 2; EC 2.7.11.24; P42-MAPK; MAPK 2; ERK-2; ERT1; Protein Tyrosine Kinase ERK2; MAP Kinase Isoform P42; EC 2.7.11; P42MAPK; MAPK 1; NS13; P38; P40; P41

Background

Gene Name: MAPK1

NCBI Gene Entry: [5594](#)

Storage

Store at liquid nitrogen for 1 year.

Kit Components

1. Human MAPK1 Knockdown Cell Line (Wb-Validated)
2. Wild-type cell line

Parental Cell Line

Human cell line supplied by the client

Validation Methods

RT-qPCR, Western blotting (WB)

Shipping

Shipped on Dry Ice.

Instructions For Use

This knockdown cell line should be paired with wild-type cell line for use.

Note: This product is for research use only.

Validation Data

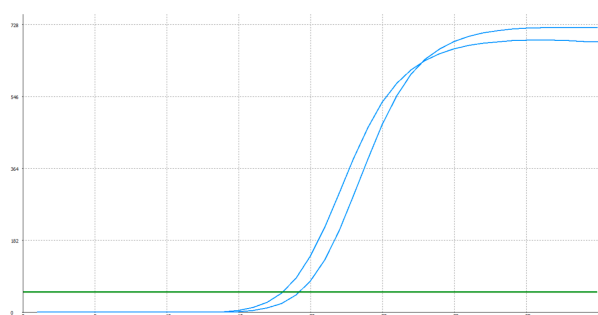
SUPPORT

SUPPORT@GENUINBIOTECH.COM
TEL: +1-540-855-7041

ORDERS

SALES@GENUINBIOTECH.COM
FAX: +1-540-855-7041

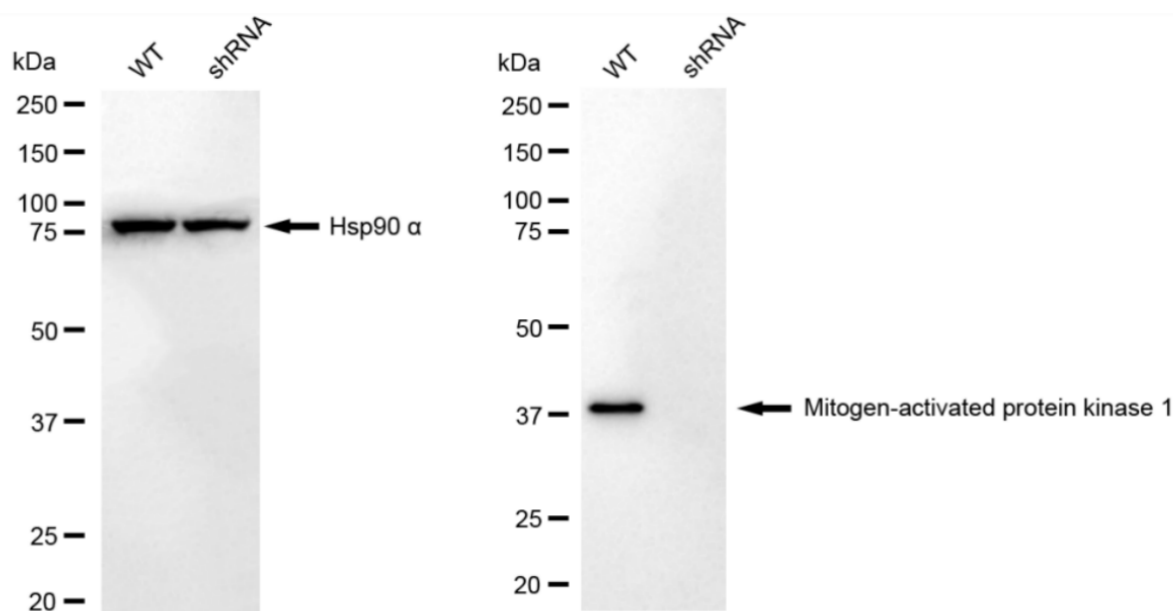
WWW.GENUINBIOTECH.COM



Genotype	Ct Value
Wild-Type	18.02
Knock-Down	19.21
$\Delta Ct (Ct_{KD} - Ct_{WT})$	1.19
% mRNA Reduction	↓ 56%

Copyright ©2025 Genuin Biotechnologies LLC

RT-qPCR analysis. HeLa cells were infected with MAPK1-specific shRNA lentiviral particles, total RNA was extracted from wild-type and knockdown cells, RT-qPCR was performed using gene-specific primers. $\Delta Ct (Ct_{KD} - Ct_{WT})$ was used to calculate mRNA reduction (%) between wild-type and knockdown cells using the following formula: $(1 - 1/2^{\Delta Ct}) \times 100\%$.



Copyright ©2024 Genuin Biotechnologies LLC

Western blotting analysis. MAPK1 protein expression in wild-type (WT) and shRNA knockdown (KD) HeLa cells was detected using Western blotting. Hsp90 α served as a loading control. The blots were incubated with primary antibodies against MAPK1 and Hsp90 α , respectively, followed by incubating with HRP-conjugated goat anti-rabbit secondary antibody. Images were developed using FeQ™ ECL Substrate Kit.