

Human TCP1 Knockdown Cell Line (WB-Validated)



Catalog #: C63137

Aliases

TCP1; T-Complex 1; CCT1; D6S230E; Ccta; Chaperonin Containing T-Complex Polypeptide 1 Subunit 1; T-Complex Protein 1 Subunit Alpha; TCP-1-Alpha; CCT-Alpha; T-Complex Protein 1, Alpha Subunit; Tailless Complex Polypeptide 1; T-Complex 1 Protein; CCTA

Background

Gene Name: TCP1

NCBI Gene Entry: [6950](#)

Storage

Store at liquid nitrogen for 1 year.

Kit Components

1. Human TCP1 Knockdown Cell Line (Wb-Validated)
2. Wild-type cell line

Parental Cell Line

Human cell line supplied by the client

Validation Methods

RT-qPCR, Western blotting (WB)

Shipping

Shipped on Dry Ice.

Instructions For Use

This knockdown cell line should be paired with wild-type cell line for use.

Note: This product is for research use only.

Validation Data

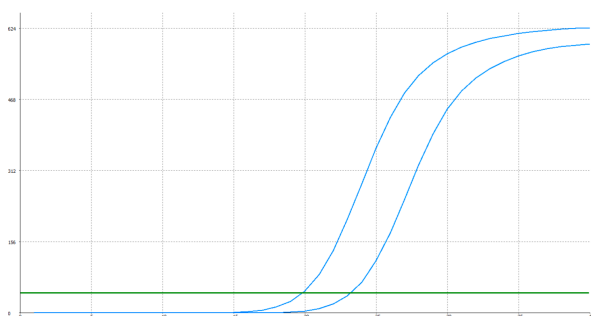
SUPPORT

SUPPORT@GENUINBIOTECH.COM
TEL: +1-540-855-7041

ORDERS

SALES@GENUINBIOTECH.COM
FAX: +1-540-855-7041

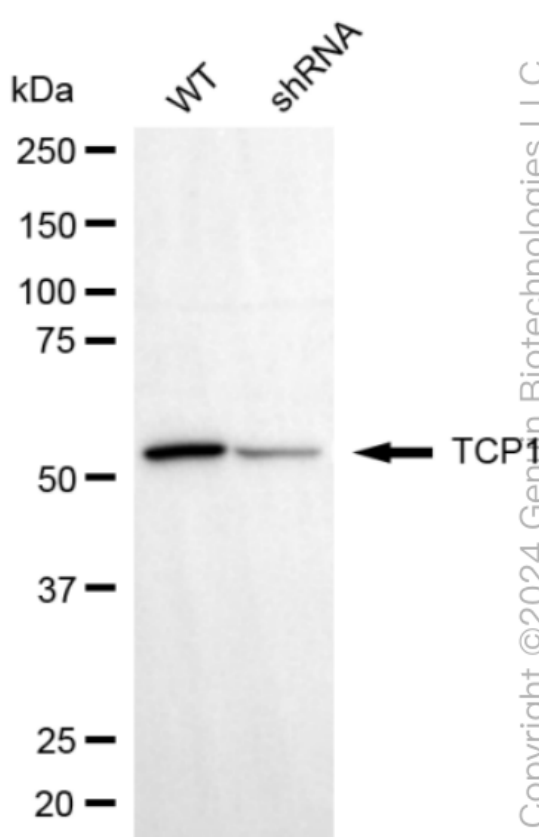
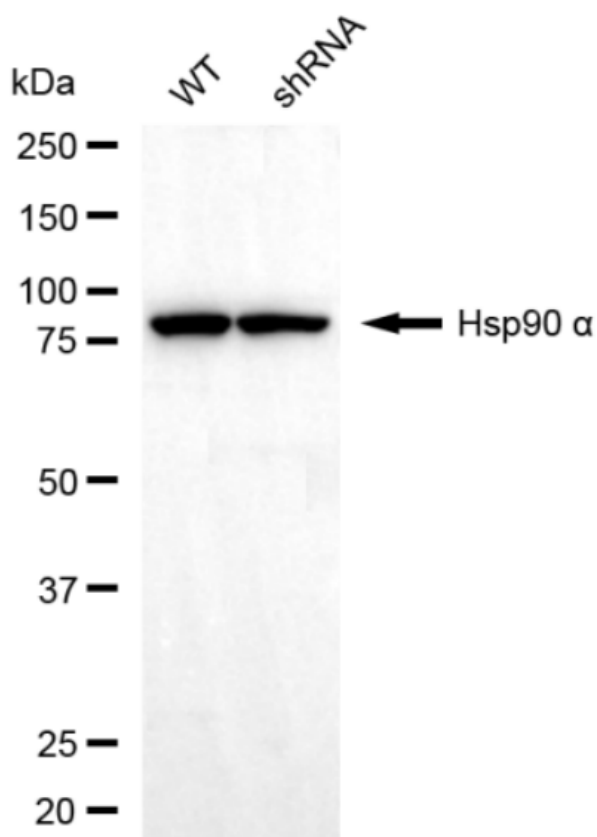
WWW.GENUINBIOTECH.COM



Genotype	Ct Value
Wild-Type	19.85
Knock-Down	23.15
$\Delta Ct (Ct_{KD} - Ct_{WT})$	3.30
% mRNA Reduction	↓ 90%

Copyright ©2025 Genuin Biotechnologies LLC

RT-qPCR analysis. HT-1080 cells were infected with TCP1-specific shRNA lentiviral particles, total RNA was extracted from wild-type and knockdown cells, RT-qPCR was performed using gene-specific primers. $\Delta Ct (Ct_{KD} - Ct_{WT})$ was used to calculate mRNA reduction (%) between wild-type and knockdown cells using the following formula: $(1 - 1/2^{\Delta Ct}) \times 100\%$.



Copyright ©2024 Genuin Biotechnologies LLC

Western blotting analysis. TCP1 protein expression in wild-type (WT) and shRNA knockdown (KD) HT-1080 cells was detected using Western blotting. Hsp90 α served as a loading control. The blots were incubated with primary antibodies against TCP1 and Hsp90 α , respectively, followed by incubating with HRP-conjugated goat anti-rabbit secondary antibody. Images were developed using FeQ™ ECL Substrate Kit.