

Human PRKCG Knockdown Cell Line (WB-Validated)



Catalog #: C63201

Aliases

PRKCG; Protein Kinase C Gamma; PKC-Gamma; PKCC; PKCG; Protein Kinase C Gamma Type; EC 2.7.11.13; MGC57564; SCA14; Protein Kinase C, Gamma; EC 2.7.11; PKCgamma; PKCI(3); PKC γ

Background

Gene Name: PRKCG

NCBI Gene Entry: [5582](#)

Storage

Store at liquid nitrogen for 1 year.

Kit Components

1. Human PRKCG Knockdown Cell Line (Wb-Validated)
2. Wild-type cell line

Parental Cell Line

Human cell line supplied by the client

Validation Methods

RT-qPCR, Western blotting (WB)

Shipping

Shipped on Dry Ice.

Instructions For Use

This knockdown cell line should be paired with wild-type cell line for use.

Note: This product is for research use only.

Validation Data

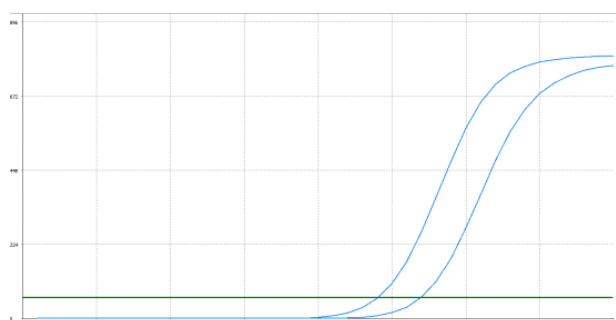
SUPPORT

SUPPORT@GENUINBIOTECH.COM
TEL: +1-540-855-7041

ORDERS

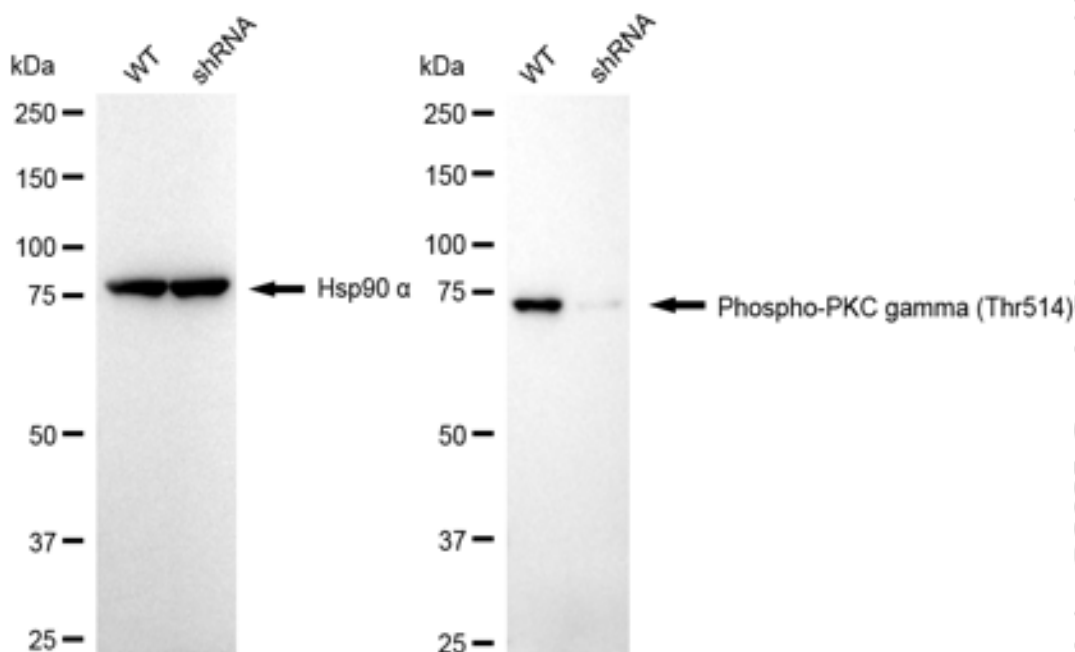
SALES@GENUINBIOTECH.COM
FAX: +1-540-855-7041

WWW.GENUINBIOTECH.COM



Genotype	Ct Value
Wild-Type	23.85
Knock-Down	26.67
Δ Ct (CtKD-CtWT)	2.82
% mRNA Reduction	86%

RT-qPCR analysis. HeLa cells were infected with PRKCG-specific shRNA lentiviral particles, total RNA was extracted from wild-type and knockdown cells, RT-qPCR was performed using gene-specific primers. Δ Ct (CtKD-CtWT) was used to calculate mRNA reduction (%) between wild-type and knockdown cells using the following formula: $(1-1/2^{\Delta\text{Ct}}) \times 100\%$.



Western blotting analysis. PRKCG protein expression in wild-type (WT) and shRNA knockdown (KD) HeLa cells was detected using Western blotting. Hsp90 α served as a loading control. The blots were incubated with primary antibodies against PRKCG and Hsp90 α , respectively, followed by incubating with HRP-conjugated goat anti-rabbit secondary antibody. Images were developed using FeQ™ ECL Substrate Kit.