

Human PSEN1 Knockdown Cell Line (WB-Validated)



Catalog #: C63205

Aliases

PSEN1; Presenilin 1; PSNL1; PS-1; PS1; S182; FAD; AD3; Familial Alzheimer Disease; Presenilin-1; Alzheimer Disease 3; Protein S182; EC 3.4.23.-; EC 3.4.23; ACNINV3

Background

Gene Name: PSEN1

NCBI Gene Entry: [5663](#)

Storage

Store at liquid nitrogen for 1 year.

Kit Components

1. Human PSEN1 Knockdown Cell Line (Wb-Validated)
2. Wild-type cell line

Parental Cell Line

Human cell line supplied by the client

Validation Methods

RT-qPCR, Western blotting (WB)

Shipping

Shipped on Dry Ice.

Instructions For Use

This knockdown cell line should be paired with wild-type cell line for use.

Note: This product is for research use only.

Validation Data

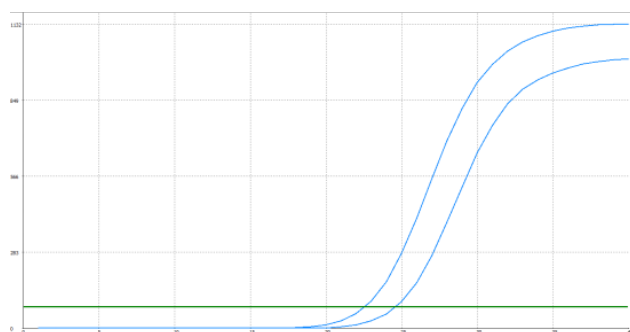
SUPPORT

SUPPORT@GENUINBIOTECH.COM
TEL: +1-540-855-7041

ORDERS

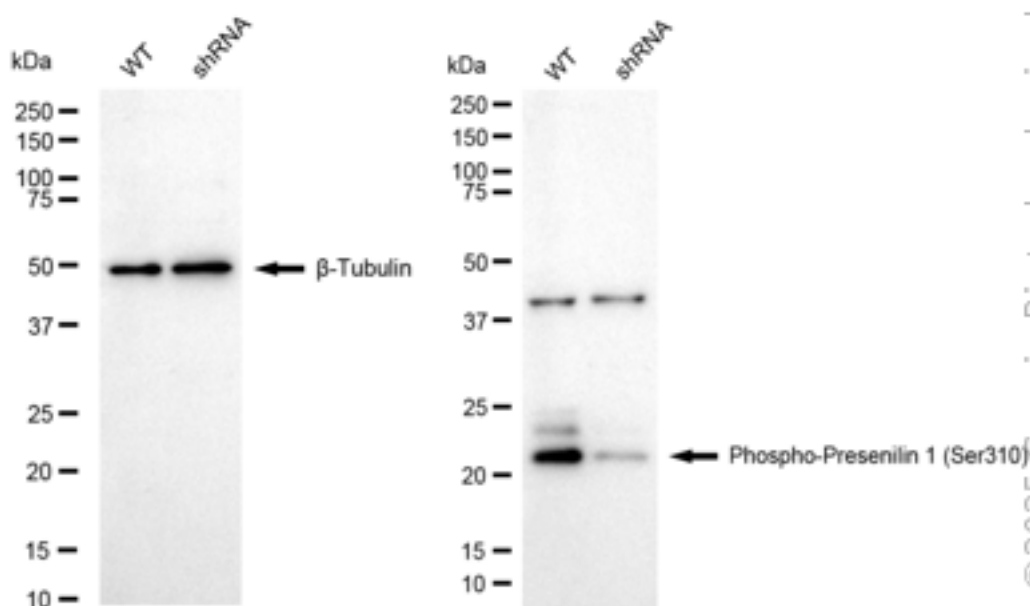
SALES@GENUINBIOTECH.COM
FAX: +1-540-855-7041

WWW.GENUINBIOTECH.COM



Genotype	Ct Value
Wild-Type	22.57
Knock-Down	24.39
Δ Ct (CtKD-CtWT)	1.82
% mRNA Reduction	72%

RT-qPCR analysis. HeLa cells were infected with PSEN1-specific shRNA lentiviral particles, total RNA was extracted from wild-type and knockdown cells, RT-qPCR was performed using gene-specific primers. Δ Ct (CtKD-CtWT) was used to calculate mRNA reduction (%) between wild-type and knockdown cells using the following formula: $(1 - 1/2^{\Delta\text{Ct}}) \times 100\%$.



Western blotting analysis. PSEN1 protein expression in wild-type (WT) and shRNA knockdown (KD) HeLa cells was detected using Western blotting. β -Tubulin served as a loading control. The blots were incubated with primary antibodies against PSEN1 and β -Tubulin, respectively, followed by incubating with HRP-conjugated goat anti-rabbit secondary antibody. Images were developed using FeQ™ ECL Substrate Kit.

