

# Human G3BP1 Knockdown Cell Line (WB-Validated)



**Catalog #: C63222**

## Aliases

G3BP1; G3BP Stress Granule Assembly Factor 1; G3BP; HDH-VIII; Ras-GTPase-Activating Protein SH3-Domain-Binding Protein; GTPase Activating Protein (SH3 Domain) Binding Protein 1; Ras GTPase-Activating Protein-Binding Protein 1; GAP SH3 Domain-Binding Protein 1; ATP-Dependent DNA Helicase VIII; DNA Helicase VIII; G3BP-1; RasGAP-Associated Endoribonuclease G3BP; GAP Binding Protein; EC 3.6.4.12; EC 3.6.4.13; HDH VIII; EC 3.6.1

## Background

Gene Name: G3BP1

NCBI Gene Entry: [10146](#)

## Storage

Store at liquid nitrogen for 1 year.

## Kit Components

1. Human G3BP1 Knockdown Cell Line (Wb-Validated)
2. Wild-type cell line

## Parental Cell Line

Human cell line supplied by the client

## Validation Methods

RT-qPCR, Western blotting (WB)

## Shipping

Shipped on Dry Ice.

## Instructions For Use

This knockdown cell line should be paired with wild-type cell line for use.

**Note:** This product is for research use only.

## Validation Data

---

### SUPPORT

SUPPORT@GENUINBIOTECH.COM  
TEL: +1-540-855-7041

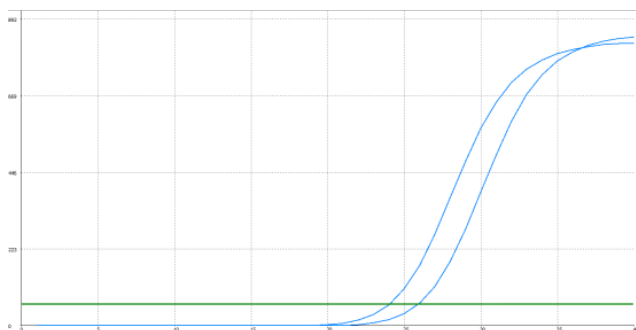
### ORDERS

SALES@GENUINBIOTECH.COM  
FAX: +1-540-855-7041

[WWW.GENUINBIOTECH.COM](http://WWW.GENUINBIOTECH.COM)

## Human G3BP1 Knockdown Cell Line (WB-Validated)

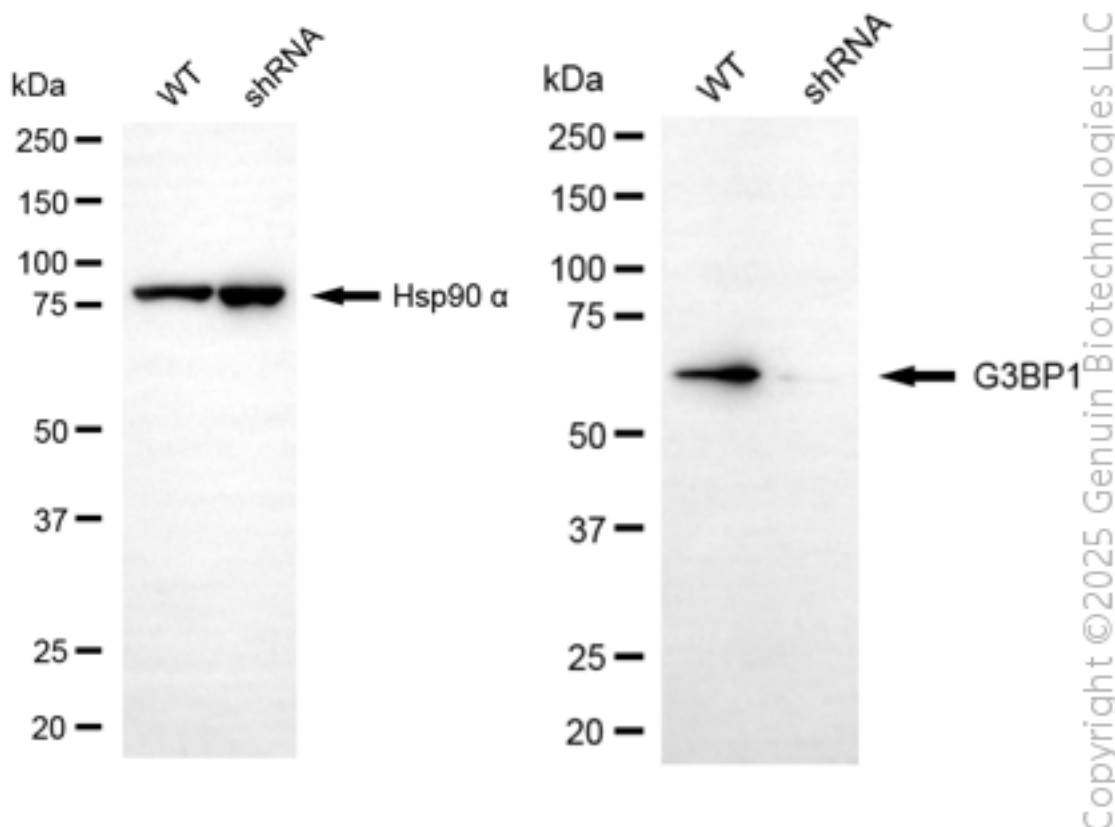
PAGE 2



Genotype	Ct Value
Wild-Type	23.94
Knock-Down	25.82
$\Delta Ct$ (CtKD-CtWT)	1.88
% mRNA Reduction	73%

Copyright ©2025 Genuin Biotechnologies LLC

RT-qPCR analysis. HeLa cells were infected with G3BP1-specific shRNA lentiviral particles, total RNA was extracted from wild-type and knockdown cells, RT-qPCR was performed using gene-specific primers.  $\Delta Ct$  (CtKD-CtWT) was used to calculate mRNA reduction (%) between wild-type and knockdown cells using the following formula:  $(1 - 1/2^{\Delta Ct}) \times 100\%$ .



Copyright ©2025 Genuin Biotechnologies LLC

Western blotting analysis. G3BP1 protein expression in wild-type (WT) and shRNA knockdown (KD) HeLa cells was detected using Western blotting. Hsp90  $\alpha$  served as a loading control. The blots were incubated with primary antibodies against G3BP1 and Hsp90  $\alpha$ , respectively, followed by incubating with HRP-conjugated goat anti-rabbit secondary antibody. Images were developed

### SUPPORT

SUPPORT@GENUINBIOTECH.COM  
TEL: +1-540-855-7041

### ORDERS

SALES@GENUINBIOTECH.COM  
FAX: +1-540-855-7041

[WWW.GENUINBIOTECH.COM](http://WWW.GENUINBIOTECH.COM)

## **Human G3BP1 Knockdown Cell Line (WB-Validated)**

PAGE 3

using FeQ™ ECL Substrate Kit.

---

### **SUPPORT**

SUPPORT@GENUINBIOTECH.COM  
TEL: +1-540-855-7041

### **ORDERS**

SALES@GENUINBIOTECH.COM  
FAX:+1-540-855-7041

**WWW.GENUINBIOTECH.COM**