

# Human RELA Knockdown Cell Line (WB-Validated)



**Catalog #: C63241**

## Aliases

RELA; RELA Proto-Oncogene, NF-KB Subunit; Nuclear Factor Of Kappa Light Polypeptide Gene Enhancer In B-Cells; NFKB3; P65; V-Rel Avian Reticuloendotheliosis Viral Oncogene Homolog A; Nuclear Factor NF-Kappa-B P65 Subunit; Transcription Factor P65; NF-Kappa-B Transcription Factor P65; NF-Kappa-B; P65delta3; AIF3BL3; CMCU

## Background

Gene Name: RELA

NCBI Gene Entry: [5970](#)

## Storage

Store at liquid nitrogen for 1 year.

## Kit Components

1. Human RELA Knockdown Cell Line (Wb-Validated)
2. Wild-type cell line

## Parental Cell Line

Human cell line supplied by the client

## Validation Methods

RT-qPCR, Western blotting (WB)

## Shipping

Shipped on Dry Ice.

## Instructions For Use

This knockdown cell line should be paired with wild-type cell line for use.

**Note:** This product is for research use only.

## Validation Data

---

### SUPPORT

SUPPORT@GENUINBIOTECH.COM  
TEL: +1-540-855-7041

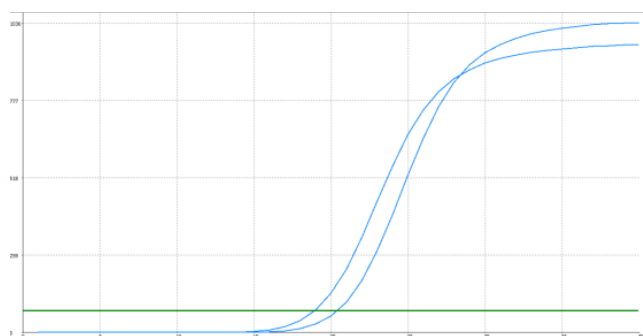
### ORDERS

SALES@GENUINBIOTECH.COM  
FAX: +1-540-855-7041

[WWW.GENUINBIOTECH.COM](http://WWW.GENUINBIOTECH.COM)

## Human RELA Knockdown Cell Line (WB-Validated)

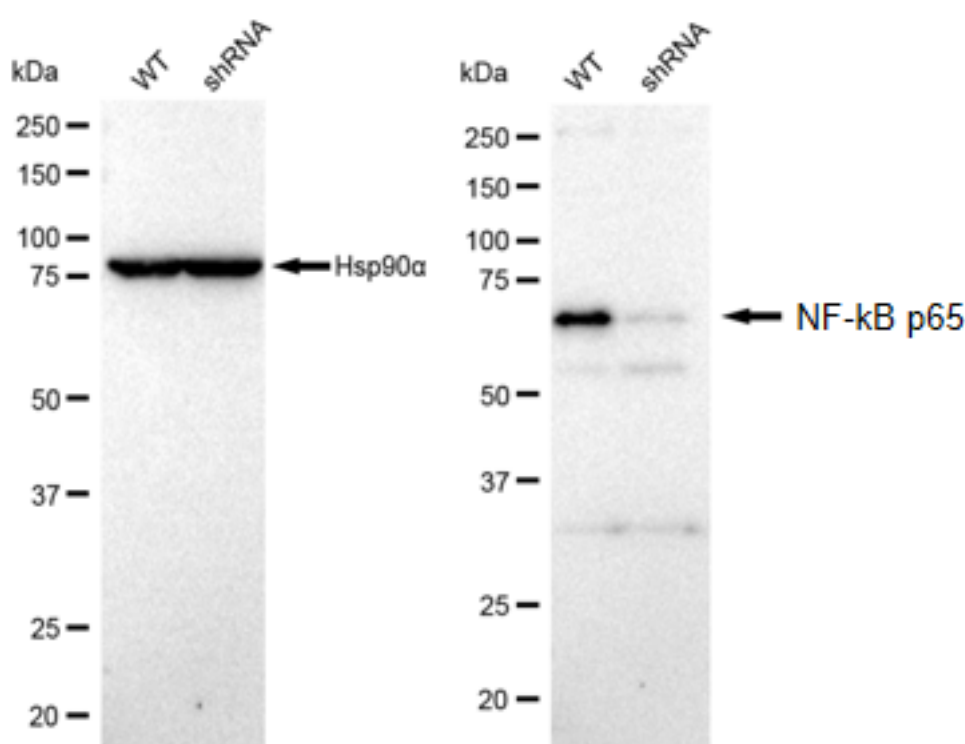
PAGE 2



| Genotype                | Ct Value |
|-------------------------|----------|
| Wild-Type               | 18.84    |
| Knock-Down              | 20.40    |
| $\Delta$ Ct (CtKD-CtWT) | 1.56     |
| % mRNA Reduction        | 66%      |

Copyright ©2025 Genuin Biotechnologies LLC

RT-qPCR analysis. HT-1080 cells were infected with RELA-specific shRNA lentiviral particles, total RNA was extracted from wild-type and knockdown cells, RT-qPCR was performed using gene-specific primers.  $\Delta$ Ct (CtKD-CtWT) was used to calculate mRNA reduction (%) between wild-type and knockdown cells using the following formula:  $(1 - 1/2^{\Delta\text{Ct}}) \times 100\%$ .



Copyright ©2025 Genuin Biotechnologies LLC

Western blotting analysis. RELA protein expression in wild-type (WT) and shRNA knockdown (KD) HT-1080 cells was detected using Western blotting. Hsp90  $\alpha$  served as a loading control. The blots were incubated with primary antibodies against RELA and Hsp90  $\alpha$ , respectively, followed by incubating with HRP-conjugated goat anti-rabbit secondary antibody. Images were developed

### SUPPORT

SUPPORT@GENUINBIOTECH.COM  
TEL: +1-540-855-7041

### ORDERS

SALES@GENUINBIOTECH.COM  
FAX: +1-540-855-7041

[WWW.GENUINBIOTECH.COM](http://WWW.GENUINBIOTECH.COM)

## **Human RELA Knockdown Cell Line (WB-Validated)**

PAGE 3

using FeQ™ ECL Substrate Kit.

---

### **SUPPORT**

SUPPORT@GENUINBIOTECH.COM  
TEL: +1-540-855-7041

### **ORDERS**

SALES@GENUINBIOTECH.COM  
FAX: +1-540-855-7041

**WWW.GENUINBIOTECH.COM**