

Human ALDOA Knockdown Cell Line (WB-Validated)



Catalog #: C63251

Aliases

ALDOA; Aldolase, Fructose-Bisphosphate A; Aldolase A, Fructose-Bisphosphate; Fructose-Bisphosphate Aldolase A; Lung Cancer Antigen NY-LU-1; Muscle-Type Aldolase; EC 4.1.2.13; ALDA; Epididymis Secretory Sperm Binding Protein Li 87p; Fructose-1,6-Bisphosphate Triosephosphate-Lyase; HEL-S-87p; GSD12

Background

Gene Name: ALDOA
NCBI Gene Entry: [226](#)

Storage

Store at liquid nitrogen for 1 year.

Kit Components

1. Human ALDOA Knockdown Cell Line (Wb-Validated)
2. Wild-type cell line

Parental Cell Line

Human cell line supplied by the client

Validation Methods

RT-qPCR, Western blotting (WB)

Shipping

Shipped on Dry Ice.

Instructions For Use

This knockdown cell line should be paired with wild-type cell line for use.

Note: This product is for research use only.

Validation Data

SUPPORT

SUPPORT@GENUINBIOTECH.COM
TEL: +1-540-855-7041

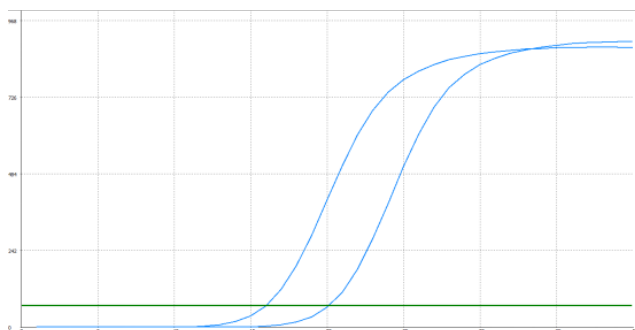
ORDERS

SALES@GENUINBIOTECH.COM
FAX: +1-540-855-7041

WWW.GENUINBIOTECH.COM

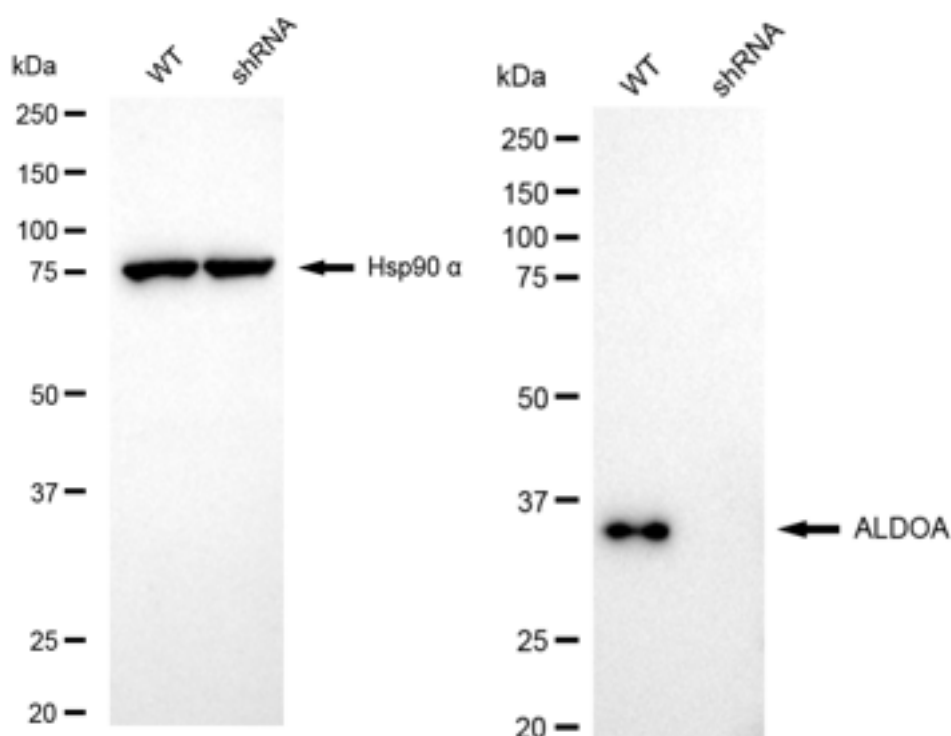
Human ALDOA Knockdown Cell Line (WB-Validated)

PAGE 2



Genotype	Ct Value
Wild-Type	15.85
Knock-Down	20.04
Δ Ct (CtKD-CtWT)	4.19
% mRNA Reduction	95%

RT-qPCR analysis. HeLa cells were infected with ALDOA-specific shRNA lentiviral particles, total RNA was extracted from wild-type and knockdown cells, RT-qPCR was performed using gene-specific primers. Δ Ct (CtKD-CtWT) was used to calculate mRNA reduction (%) between wild-type and knockdown cells using the following formula: $(1 - 1/2^{\Delta\text{Ct}}) \times 100\%$.



Western blotting analysis. ALDOA protein expression in wild-type (WT) and shRNA knockdown (KD) HeLa cells was detected using Western blotting. Hsp90 α served as a loading control. The blots were incubated with primary antibodies against ALDOA and Hsp90 α , respectively, followed by incubating with HRP-conjugated goat anti-rabbit secondary antibody. Images were developed

SUPPORT

SUPPORT@GENUINBIOTECH.COM
TEL: +1-540-855-7041

ORDERS

SALES@GENUINBIOTECH.COM
FAX: +1-540-855-7041

WWW.GENUINBIOTECH.COM

Human ALDOA Knockdown Cell Line (WB-Validated)

PAGE 3

using FeQ™ ECL Substrate Kit.

SUPPORT

SUPPORT@GENUINBIOTECH.COM
TEL: +1-540-855-7041

ORDERS

SALES@GENUINBIOTECH.COM
FAX: +1-540-855-7041

WWW.GENUINBIOTECH.COM