

Human CTH Knockdown Cell Line (WB-Validated)



Catalog #: C63268

Aliases

CTH; Cystathionine Gamma-Lyase; CSE; Cystathionase (Cystathionine Gamma-Lyase); Cysteine-Protein Sulphydrase; Homocysteine Desulphydrase; Cysteine Desulphydrase; Gamma-Cystathionase; EC 4.4.1.1; CGL; Homoserine Dehydratase; Homoserine Deaminase; EC 4.4.1.2; EC 4.4.1

Background

Gene Name: CTH
NCBI Gene Entry: [1491](#)

Storage

Store at liquid nitrogen for 1 year.

Kit Components

1. Human CTH Knockdown Cell Line (Wb-Validated)
2. Wild-type cell line

Parental Cell Line

Human cell line supplied by the client

Validation Methods

RT-qPCR, Western blotting (WB)

Shipping

Shipped on Dry Ice.

Instructions For Use

This knockdown cell line should be paired with wild-type cell line for use.

Note: This product is for research use only.

Validation Data

SUPPORT

SUPPORT@GENUINBIOTECH.COM
TEL: +1-540-855-7041

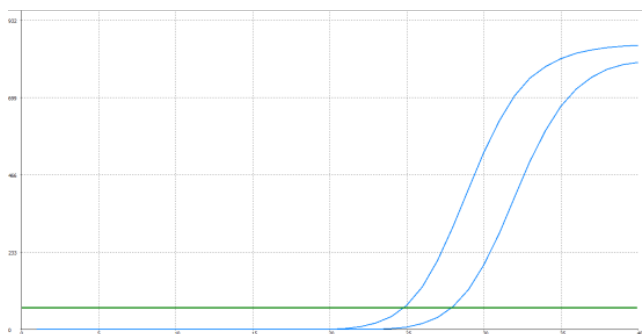
ORDERS

SALES@GENUINBIOTECH.COM
FAX: +1-540-855-7041

WWW.GENUINBIOTECH.COM

Human CTH Knockdown Cell Line (WB-Validated)

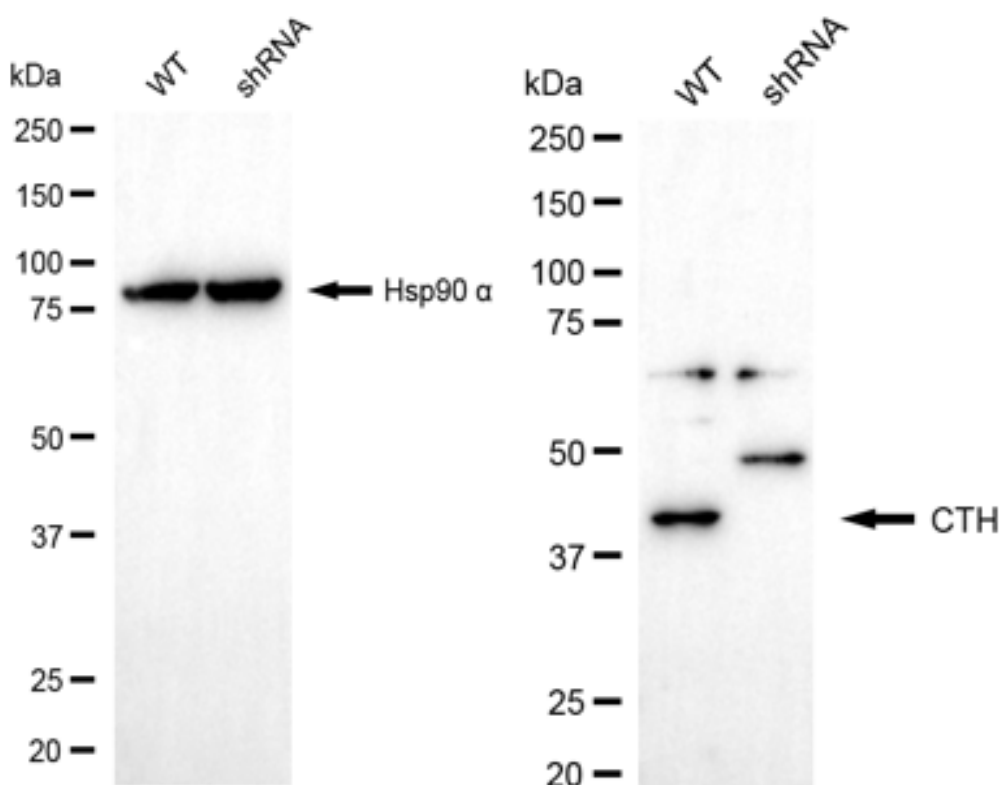
PAGE 2



Genotype	Ct Value
Wild-Type	24.63
Knock-Down	27.66
ΔCt (CtKD-CtWT)	3.03
% mRNA Reduction	88%

Copyright ©2025 Genuin Biotechnologies LLC

RT-qPCR analysis. HeLa cells were infected with CTH-specific shRNA lentiviral particles, total RNA was extracted from wild-type and knockdown cells, RT-qPCR was performed using gene-specific primers. ΔCt (CtKD-CtWT) was used to calculate mRNA reduction (%) between wild-type and knockdown cells using the following formula: $(1 - 1/2^{\Delta Ct}) \times 100\%$.



Copyright ©2025 Genuin Biotechnologies LLC

Western blotting analysis. CTH protein expression in wild-type (WT) and shRNA knockdown (KD) HeLa cells was detected using Western blotting. Hsp90 α served as a loading control. The

SUPPORT

SUPPORT@GENUINBIOTECH.COM
TEL: +1-540-855-7041

ORDERS

SALES@GENUINBIOTECH.COM
FAX: +1-540-855-7041

WWW.GENUINBIOTECH.COM

blots were incubated with primary antibodies against CTH and Hsp90 α , respectively, followed by incubating with HRP-conjugated goat anti-rabbit secondary antibody. Images were developed using FeQ™ ECL Substrate Kit.