

# Human DCLK1 Knockdown Cell Line (WB-Validated)



**Catalog #: C63270**

## Aliases

DCLK1; Doublecortin Like Kinase 1; DCDC3A; KIAA0369; DCAMKL1; DCLK; Doublecortin Domain-Containing Protein 3A; Doublecortin-Like And CAM Kinase-Like 1; Serine/Threonine-Protein Kinase DCLK1; Doublecortin-Like Kinase 1; EC 2.7.11.1; Doublecortin And CaM Kinase-Like 1; EC 2.7.11; CLICK1; CL1

## Background

Gene Name: DCLK1

NCBI Gene Entry: [9210](#)

## Storage

Store at liquid nitrogen for 1 year.

## Kit Components

1. Human DCLK1 Knockdown Cell Line (Wb-Validated)
2. Wild-type cell line

## Parental Cell Line

Human cell line supplied by the client

## Validation Methods

RT-qPCR, Western blotting (WB)

## Shipping

Shipped on Dry Ice.

## Instructions For Use

This knockdown cell line should be paired with wild-type cell line for use.

**Note:** This product is for research use only.

## Validation Data

---

### SUPPORT

SUPPORT@GENUINBIOTECH.COM  
TEL: +1-540-855-7041

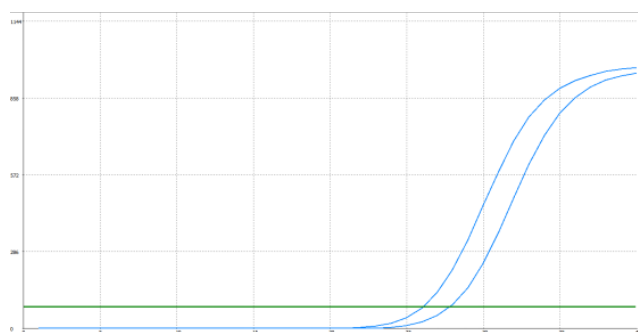
### ORDERS

SALES@GENUINBIOTECH.COM  
FAX: +1-540-855-7041

[WWW.GENUINBIOTECH.COM](http://WWW.GENUINBIOTECH.COM)

## Human DCLK1 Knockdown Cell Line (WB-Validated)

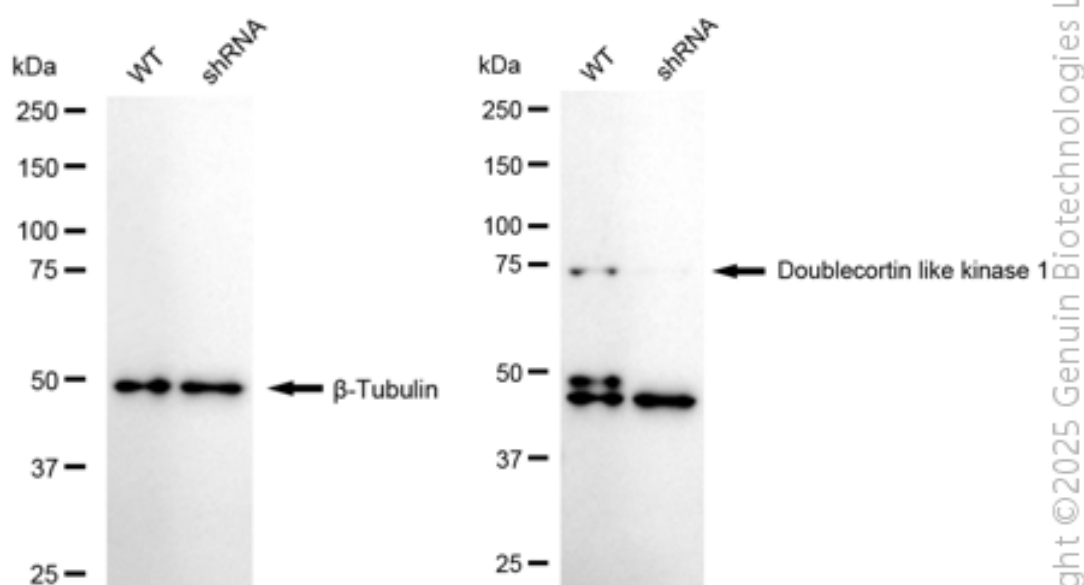
PAGE 2



Genotype	Ct Value
Wild-Type	25.83
Knock-Down	27.50
$\Delta$ Ct (CtKD-CtWT)	1.67
% mRNA Reduction	69%

Copyright © 2025 Genuin Biotechnologies LLC

RT-qPCR analysis. HeLa cells were infected with DCLK1-specific shRNA lentiviral particles, total RNA was extracted from wild-type and knockdown cells, RT-qPCR was performed using gene-specific primers.  $\Delta$ Ct (CtKD-CtWT) was used to calculate mRNA reduction (%) between wild-type and knockdown cells using the following formula:  $(1 - 1/2^{\Delta\text{Ct}}) \times 100\%$ .



Copyright © 2025 Genuin Biotechnologies LLC

Western blotting analysis. DCLK1 protein expression in wild-type (WT) and shRNA knockdown (KD) HeLa cells was detected using Western blotting.  $\beta$ -Tubulin served as a loading control. The blots were incubated with primary antibodies against DCLK1 and  $\beta$ -Tubulin, respectively, followed by incubating with HRP-conjugated goat anti-rabbit secondary antibody. Images were developed using FeQ™ ECL Substrate Kit.

### SUPPORT

SUPPORT@GENUINBIOTECH.COM  
TEL: +1-540-855-7041

### ORDERS

SALES@GENUINBIOTECH.COM  
FAX: +1-540-855-7041

[WWW.GENUINBIOTECH.COM](http://WWW.GENUINBIOTECH.COM)