

Human DFFA Knockdown Cell Line (WB-Validated)



Catalog #: C63271

Aliases

DFFA; DNA Fragmentation Factor Subunit Alpha; DFF-45; DFF45; ICAD; DFF1; DNA Fragmentation Factor, 45kDa, Alpha Polypeptide; DNA Fragmentation Factor 45 KDa Subunit; Inhibitor Of CAD; DNA Fragmentation Factor, 45 KD, Alpha Polypeptide; DNA Fragmentation Factor, 45 KD, Alpha Subunit

Background

Gene Name: DFFA

NCBI Gene Entry: [1676](#)

Storage

Store at liquid nitrogen for 1 year.

Kit Components

1. Human DFFA Knockdown Cell Line (Wb-Validated)
2. Wild-type cell line

Parental Cell Line

Human cell line supplied by the client

Validation Methods

RT-qPCR, Western blotting (WB)

Shipping

Shipped on Dry Ice.

Instructions For Use

This knockdown cell line should be paired with wild-type cell line for use.

Note: This product is for research use only.

Validation Data

SUPPORT

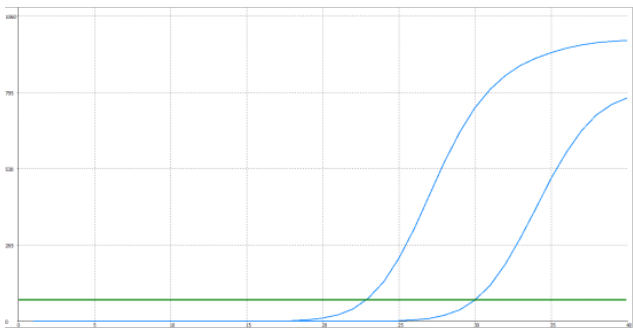
SUPPORT@GENUINBIOTECH.COM
TEL: +1-540-855-7041

ORDERS

SALES@GENUINBIOTECH.COM
FAX: +1-540-855-7041

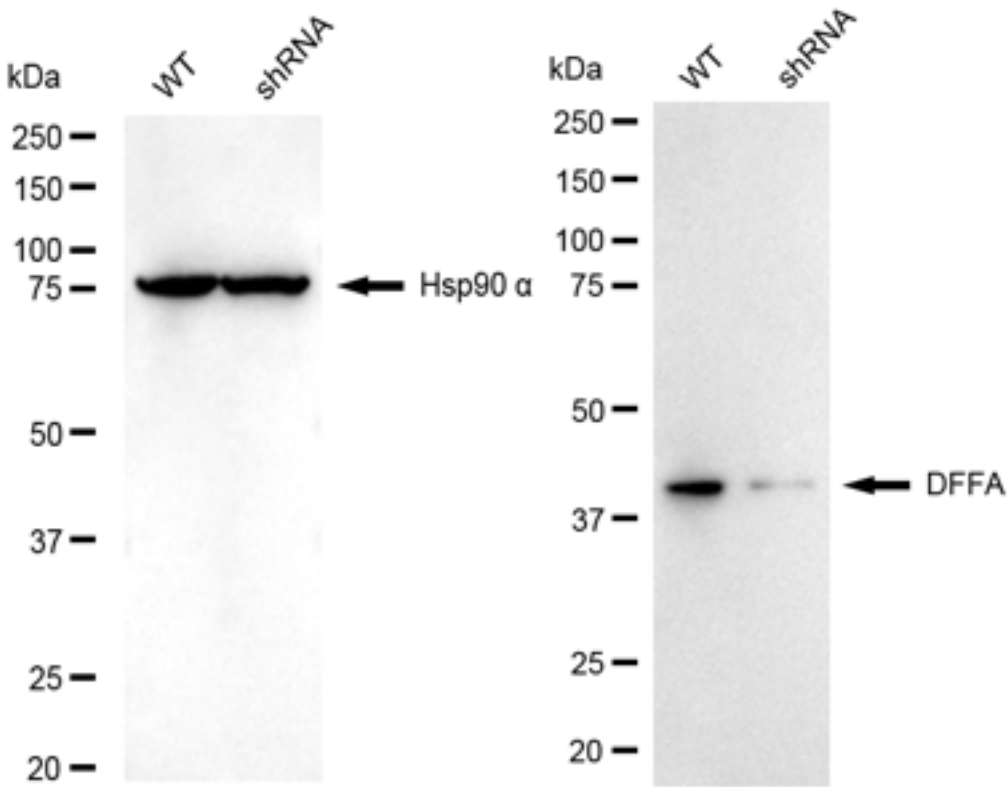
WWW.GENUINBIOTECH.COM

Human DFFA Knockdown Cell Line (WB-Validated)



Genotype	Ct Value
Wild-Type	22.71
Knock-Down	29.43
Δ Ct (CtKD-CtWT)	6.72
% mRNA Reduction	99%

RT-qPCR analysis. HeLa cells were infected with DFFA-specific shRNA lentiviral particles, total RNA was extracted from wild-type and knockdown cells, RT-qPCR was performed using gene-specific primers. Δ Ct (CtKD-CtWT) was used to calculate mRNA reduction (%) between wild-type and knockdown cells using the following formula: $(1-1/2^{\Delta\text{Ct}}) \times 100\%$.



Western blotting analysis. DFFA protein expression in wild-type (WT) and shRNA knockdown (KD) HeLa cells was detected using Western blotting. Hsp90 α served as a loading control. The blots were incubated with primary antibodies against DFFA and Hsp90 α , respectively, followed

SUPPORT

SUPPORT@GENUINBIOTECH.COM
TEL: +1-540-855-7041

ORDERS

SALES@GENUINBIOTECH.COM
FAX: +1-540-855-7041

WWW.GENUINBIOTECH.COM

Human DFFA Knockdown Cell Line (WB-Validated)

PAGE 3

by incubating with HRP-conjugated goat anti-rabbit secondary antibody. Images were developed using FeQ™ ECL Substrate Kit.

SUPPORT

SUPPORT@GENUINBIOTECH.COM
TEL: +1-540-855-7041

ORDERS

SALES@GENUINBIOTECH.COM
FAX: +1-540-855-7041

WWW.GENUINBIOTECH.COM