

# Human LAT Knockdown Cell Line (WB-Validated)



**Catalog #: C63297**

## Aliases

LAT; Linker For Activation Of T Cells; LAT1; Linker For Activation Of T Cells, Transmembrane Adaptor; Linker For Activation Of T-Cells Family Member 1; 36 KDa Phosphotyrosine Adapter Protein; P36-38; Pp36; 36 KDa Phospho-Tyrosine Adapter Protein; 36 KDa Phospho-Tyrosine Adaptor Protein; IMD52

## Background

Gene Name: LAT

NCBI Gene Entry: [27040](#)

## Storage

Store at liquid nitrogen for 1 year.

## Kit Components

1. Human LAT Knockdown Cell Line (Wb-Validated)
2. Wild-type cell line

## Parental Cell Line

Human cell line supplied by the client

## Validation Methods

RT-qPCR, Western blotting (WB)

## Shipping

Shipped on Dry Ice.

## Instructions For Use

This knockdown cell line should be paired with wild-type cell line for use.

**Note:** This product is for research use only.

## Validation Data

---

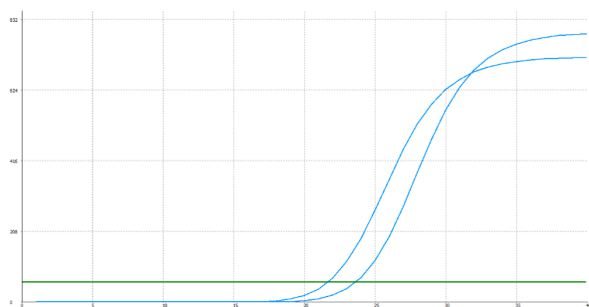
### SUPPORT

SUPPORT@GENUINBIOTECH.COM  
TEL: +1-540-855-7041

### ORDERS

SALES@GENUINBIOTECH.COM  
FAX: +1-540-855-7041

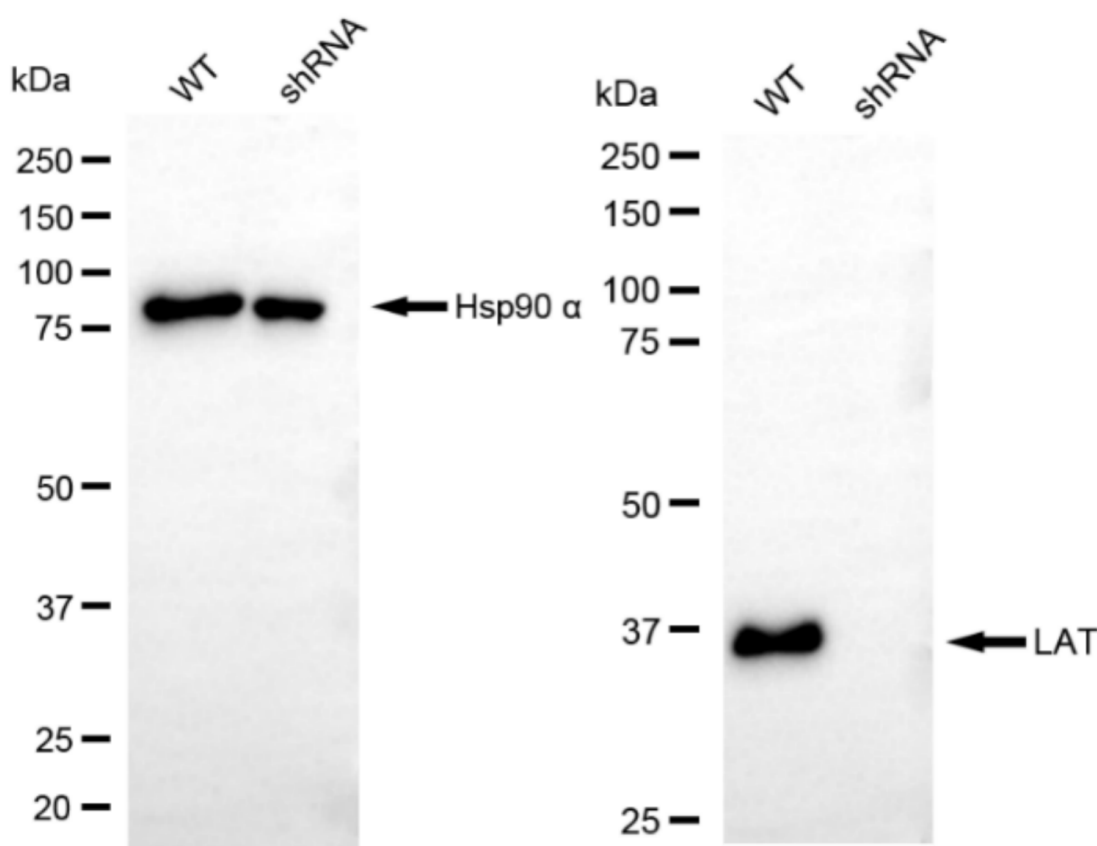
[WWW.GENUINBIOTECH.COM](http://WWW.GENUINBIOTECH.COM)



Genotype	Ct Value
Wild-Type	24.41
Knock-Down	23.53
$\Delta Ct (Ct_{KD} - Ct_{WT})$	2.12
% mRNA Reduction	↓ 77%

Copyright ©2025 Genuin Biotechnologies LLC

RT-qPCR analysis. HT-1080 cells were infected with LAT-specific shRNA lentiviral particles, total RNA was extracted from wild-type and knockdown cells, RT-qPCR was performed using gene-specific primers.  $\Delta Ct (Ct_{KD} - Ct_{WT})$  was used to calculate mRNA reduction (%) between wild-type and knockdown cells using the following formula:  $(1 - 1/2^{\Delta Ct}) \times 100\%$ .



Copyright ©2025 Genuin Biotechnologies LLC

Western blotting analysis. LAT protein expression in wild-type (WT) and shRNA knockdown (KD) HT-1080 cells was detected using Western blotting. Hsp90  $\alpha$  served as a loading control. The blots were incubated with primary antibodies against LAT and Hsp90  $\alpha$ , respectively, followed by incubating with HRP-conjugated goat anti-rabbit secondary antibody. Images were developed using NaQ™ ECL Substrate Kit.